



## **On-line PICASSO PROJECT**

**Comprehensive Catalogue Raisonné  
Prof. Dr. Enrique Mallen**

**1947**

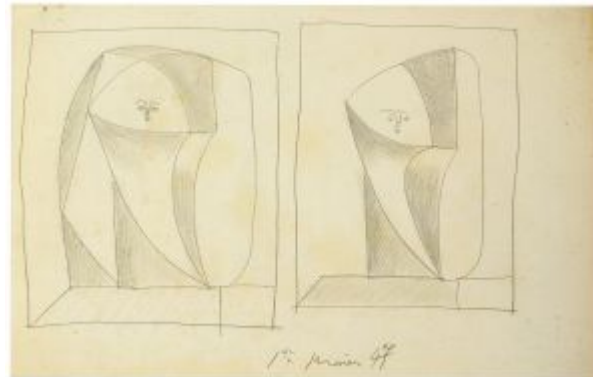


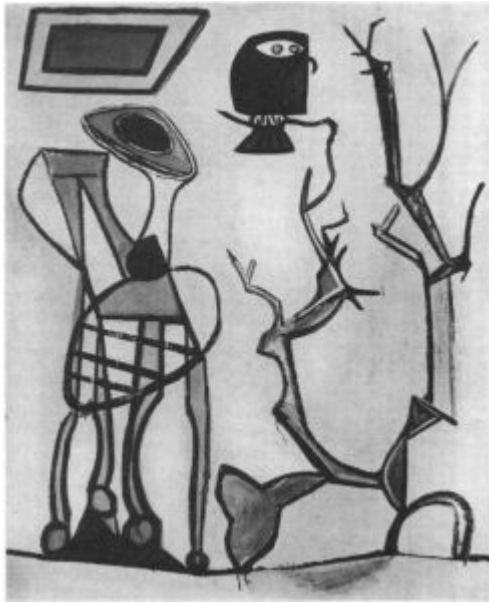
**Études pour Tête de femme (Françoise).** Paris. 1-January/1947. Lead pencil on paper. 32,5 x 50 cm. Private collection.

**OPP.47:108**; PP.47:001; Z.XV:24; JA.09:34p; WR.96:427p

**Deux têtes.** Paris. 1-January/1947. Lead pencil on paper. 33 x 50,5 cm. Private collection.

**OPP.47:109**; PP.47:002; Z.XV:23; JA.09\*:146p





**Hibou et chaise (1<sup>ème</sup> ébauche)**. Paris. 1-January/1947.  
Oil on canvas [OïC] [Earlier version of *Le hibou bleu*]. 130 x 97 cm. Private collection.

**OPP.47:110**; PP.47:002a

**Le hibou bleu**. Paris. [13] 1-January/1947. Oil on canvas [Final version of *Hibou et chaise (1<sup>ème</sup> ébauche)*]. [123 x 102] 123,5 x 104,1 cm. Mr. and Mrs. Klaus Perls Collection.

**OPP.47:113**; PP.47:011; Z.XV:22; EG.66\*:11p;  
JM.93:107p; JR.62\*:6.18; NY.48c\*:n/a; RS.88:145p





**Le pot de fleurs.** Paris. 3-January/1947. Oil on canvas [OIC]. 35 x 27 cm. Private collection.

**OPP.47:111**; PP.47:003; Z.XV:16

---

**Crâne et oursins.** Paris. 3-January/1947. Oil on canvas. 50 x 73 cm. Bergen Kunstmuseum, Norway. Stenersen Collection.

**OPP.47:116**; PP.47:004; Z.XV:26; JA.09\*:152p; PF.10\*:20





**Nature morte aux crâne et trois oursins.** Paris. 6-January/1947. Oil on canvas. 60 x 72,5 cm. Museo Picasso, Málaga. Gift of Christine Ruiz-Picasso.

**OPP.47:143**; MPM:1.1.A; PP.47:005; Z.XV:27; DP.20\*:126; GS.03:1.25; JA.09\*:153p; JB.92:310p; LU.93:354; NC.17\*:101

**Femme au chapeau vert (Françoise).** Paris. 8-January/1947. Oil on canvas. 73 x 60 cm. Sotheby's. #45, N08587, 11/04/09. Formerly Galerie Cazeau-Béraudière, Paris. 2001. Maya Widmaier Picasso Collection.

**OPP.47:029**; WW.91:472p





**Tête de femme.** Paris. 8-January/1947. Oil on canvas. 73 x 60 cm. Private collection. Courtesy Galerie Louise Leiris, Paris.

**OPP.47:138**; PP.47:006; WW.91:472p

---

**Femme au chapeau (Françoise).** Paris. 9-January/1947. Oil on canvas. 73 x 60 cm. Sotheby's. #54, L05002. 02/08/05.

**OPP.47:088**; PP.47:008; Z.XV:37





**Femme au chapeau vert.** Paris. 9-January/1947. Oil on canvas [Oic]. 73 x 60 cm. Private collection.

**OPP.47:534**; PP.47:007; Z.XV:30

---

**Le hibou sur la chaise.** Paris. 10-January/1947. Oil on canvas. [73 x 60] 72,7 x 60 cm. Christie's. #28C, 3783, 11/12/15.

**OPP.47:312**; PP.47:009; Z.XV:19; OS.56\*:277





**Vanite.** Paris. 11-January/1947. Wax crayon on paper envelope. 7,5 x 9,5 cm. Markus Schöb Collection, Switzerland. Formerly Artcurial. #234, 1331, 10/22/07; Inès and Gérard Sassier Collection.

**OPP.47:192**; PF.10\*:18

**Études de hiboux.** Paris. 13-January/1947. Graphite & colored crayons on cream wove paper [Oic]. 65 x 50 cm. Perls Galleries, New York.

**OPP.47:112**; PP.47:010; Z.XV:25; BS.55:90p; GT.81\*:92







**Le hibou.** Paris. 14-January/1947. Oil. 66 x 51 cm. Private collection.

**OPP.47:350**; JV.06\*:103p

**Hibou sur une chaise et oursins.** Paris. 14-January/1947. Oil on canvas [OïC]. 130 x 97 cm. Private collection.

**OPP.47:535**; PP.47:012; Z.XV:34





**Chouette sur une chaise.** Paris. 15-January/1947. Oil on canvas. 100 x 81 cm. Private collection.

**OPP.47:260**; JR.10\*:57p; NY.95f\*:21p

---

**Chouette.** Paris. 15-January/1947. Essence on paper. 66 x 50,5 cm. Private collection.

**OPP.47:261**; PP.47:013; Z.XV:33; GL.81\*:30; JA.09\*:147p





**Hibou à la chaise.** Paris. [Mid-January]/1947. Oil on canvas. 73,7 x 58,4 cm. Allen Memorial Art Museum, Oberlin College, Oberlin, OH. (Inv AMAM 1957.113). Gift of Joseph and Enid Bissett, 1957.

**OPP.47:197**; JB.92:296p; TO.04\*:96

**Hibou sur une chaise.** Paris. 16-January/1947. Oil on canvas. 41 x 27 cm. Sotheby's. #295, L10007, 06/23/10. Formerly Galleria d'Arte Art Mangia, Piacenza. 2009.

**OPP.47:247**; PP.47:018; Z.XV:29; SO.06\*:n/a





**Hibou sur une chaise.** Paris. 17-January/1947. Oil on canvas. 73 x 60 cm. Museo Picasso, Málaga. Gift of Christine Ruiz-Picasso.

**OPP.47:114**; MPM:1.7.A; PP.47:014; Z.XV:35; DP.20\*:127; GS.03:1.26; JA.09\*:148p; NC.17\*:102

---

**La chouette.** Paris. 17-January/1947. Oil essence on paper. 66,5 x 51 cm. Private collection.

**OPP.47:338**; JA.09\*:147p; JV.06\*:106p





**La chouette.** Paris. 19-January/1947. Oil on canvas. 73 x 60 cm. The Israel Museum, Jerusalem. (Inv B52.2112). Gift of Jan Mitchell and Ellin Mitchell, New York to the America-Israel Cultural Foundation.

**OPP.47:115**; PP.47:015; Z.XV:36; JA.09\*:149p; TO.04\*:95

---

**Esquisse de visage de femme.** Vallauris. 19-January/1947. Painted and partially glazed and varnished ceramic; plat long with crimped edges. 38,1 cm. Sotheby's. #21, N09727, 05/18/17. Formerly Marina Picasso Collection.

**OPP.47:505**; GE.04\*:n/a; HB.85\*:n/a





**Le hibou.** Paris. 19-January/1947. Oil on paper. 66 x 50,8 cm.  
Private collection.

**OPP.47:611**; NY.95f\*:23p

**Hibou à la chaise, fond ocré.** Paris. 20-January/1947.  
Lithograph in two colors. 64,7 x 49,5 cm. Kunstmuseum  
Picasso, Münster. (Inv 164.55). Also Museu Picasso,  
Barcelona.

**OPP.47:036**; B.I:410; M:55.B; MPB:70.154;  
BS.55:202; HJ.96:61p; ME.82a\*:116; MM.02\*:154p;  
MU.16\*:n/a; NY.47c\*:13; PF.10\*:35; TO.04\*:98;  
TO.99\*:91





**Hibou à la chaise.** Paris. 20-January/1947. Lithograph on Arches. [66 x 49,9] 65,5 x 50 cm. Museu Picasso, Barcelona. Sabartés Collection.

**OPP.47:043**; B.I:409; M:54.B; MPB:70.155; NY.47c\*:12; TO.04\*:99

**Hibou sur fond blanc.** Paris. 20-January/1947. Lithograph on Arches. [63,5 x 41,9] 65,5 x 50 cm. Museu Picasso, Barcelona. Sabartés Collection. Also Musée Picasso, Paris.

**OPP.47:069**; B.I:408; M:53; MPB:70.156; MPP:1990.355; NY.47c\*:14; TO.04\*:100





**Hibou sur la chaise.** Paris. 20-January/1947. Oil on canvas. 73 x 60,4 cm. Hilti Art Foundation, Schaan, Liechtenstein. Formerly Sotheby's. #59, N08022, 11/04/04.

**OPP.47:087**; JA.09\*:151p; LY.53a\*:n/a; PA.52g\*:n/a; PF.10\*:36



**Hibou à la chaise.** Paris. 20-January/1947. Lithograph. 64 x 50 cm. Musée Picasso, Antibes. On deposit from Musée Picasso, Paris. Jacqueline Roque Picasso Collection. Dation 1990.

**OPP.47:577**; M:54; MPP:1990.356





**Hibou à la chaise fond ocré.** Paris. 20-January/1947.  
Lithograph. 64 x 50 cm. Musée Picasso, Antibes. On deposit  
from Musée Picasso, Paris. Jacqueline Roque Picasso Collection.  
Dation 1990.

**OPP.47:578**; M:55; MPP:1990.357

**Hibou au crayon.** Paris. 21-January/1947. Lithograph.  
[64,7 x 50,4] 65 x 49 cm. Museu Picasso, Barcelona.  
Sabartés Collection. Also Christie's. #49, 1322,  
04/28/03.

**OPP.47:035**; B.I:412; M:57; MPA:1981.6.3;  
MPB:70.157; NY.47c\*:15; PM.94:153; TO.04\*:101





**Le hibou noir.** Paris. 21-January/1947. Lithograph on Arches. [62,9 x 47,6] 65 x 50 cm. Museu Picasso, Barcelona. Sabartés Collection.

**OPP.47:050**; B.I:411; M:56; MPB:70.153; BS.55:92p; NY.47c\*:16; TO.04\*:97



**Le hibou noir.** Paris. 21-January/1947. Lithograph. 64 x 48 cm. Musée Picasso, Antibes. On Loan from Musée Picasso, Paris. Jacqueline Roque Picasso Collection. Dation 1990.

**OPP.47:579**; MPP:1990.358



**Les faunes et la centauresse.** Paris. 26-January/1947. Lithograph on wove paper. [49 x 64] 49,5 x 65,7 cm. Museu Picasso, Barcelona. Sabartés Collection. Also Christie's. #126, 1200, 02/13/03.

**OPP.47:038**; B.I:413; M:59; MPB:70.170; DC.87:398; FC.00\*:87; GP.96:288p; JM.07\*:44; MG.92\*:74; NY.47c\*:17; PA.20j\*:152; TO.04\*:177

---

**Ines et son enfant.** Paris. 28-January/1947. Pencil. 64,8 x 49,5 cm. Private collection. Formerly Sotheby's. #361, 11/09/95.

**OPP.47:601**; PP.47:015a





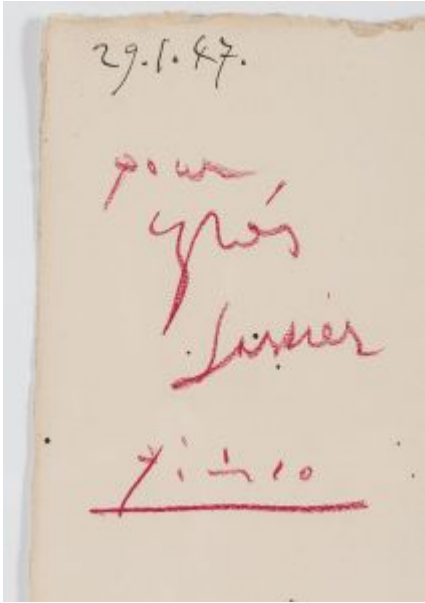
**Inès Sassier et son enfant.** Paris. 29-January/1947.  
Lithograph on Arches. 65,7 x 49,9 cm. Kunstmuseum Picasso,  
Münster. Also The Museum of Modern Art, NYC. (Inv 563.1951).  
Purchased.

**OPP.47:053**; B.I:415; M:61; FG.64:174p; HK.65:165p;  
MD.02\*:236p; NY.47c\*:20; WS.95a:247p

**Inès Sassier et son enfant.** Paris. 29-January/1947.  
Lithograph on Arches. 63,5 x 37,5 cm. Christie's. #51,  
1322, 04/28/03.

**OPP.47:055**; B.I:414; M:60; NY.47c\*:19





**Dédicace (Pour Inès Sassier)**. Paris. 29-January/1947.  
Lithograph in black on Arches [reverse of *Inès Sassier et son enfant*]. 65,2 × 50,8 cm. Piasa. #6, 1687, 06/22/17.

**OPP.47:608**

**Le chandelier**. Paris. 1-February/1947. Oil on  
canvas [OIC]. 73 x 60 cm. Private collection.

**OPP.47:533**; PP.47:017; Z.XV:28





**Centaure et bacchante.** Paris. 2-February/1947. Lithograph, edition 50. 49 x 64 cm. Museu Picasso, Barcelona. Sabartés Collection. Also Christie's. #217, 9512, 10/31/00.

**OPP.47:006**; B.I:417; M:63; MPB:70.171; TO.04\*:178

---

**Centaure et bacchante.** Vallauris. 2-February/1947. Lithograph on Arches, edition 50. [47 x 55,5] 50 x 65 cm. Museu Picasso, Barcelona. Sabartés Collection. Also Christie's. #225, 1074, 05/01/02.

**OPP.47:026**; B.I:416; M:62; MPB:70.172; AS.60:107p; BS.55:204; CH.97:63p; GM.81\*:137; GP.96:287p; JM.07\*:43; NY.47c\*:18; TO.04\*:179





**Le gros pigeon.** Paris. 2-February/1947.  
Lithograph on Arches. 38,1 x 50,8 cm. Museu  
Picasso, Barcelona. Sabartés Collection. Also  
Musée Picasso, Antibes.

**OPP.47:045**; B.I:419; M:66; MPA:1981.6.5;  
MPB:70.185; LW.15\*:200p; TO.04\*:274

---

**Pigeon sur fond gris.** Paris. 2-  
February/1947. Lithograph on Arches. 27,8  
x 44,6 cm. Museu Picasso, Barcelona.  
Sabartés Collection. Also Christie's. #55,  
1322, 04/28/03.

**OPP.47:062**; B.I:418; M:64; MPB:70.020;  
GP.96:283p; JR.12:207p; LB.58:90p;  
TO.04\*:273





**Composition patriotique.** Paris. 3-February/1947. Oil on canvas. 60,3 x 72,6 cm. Christie's. #45, 1147, 11/06/02. Formerly Thomas Ammann Fine Art.

**OPP.47:032**; BA.95c\*:n/a; LU.93:350; LU.93:350; PF.10\*:2; TO.04\*:89; WS.93\*:93

---

**Ramón Reventós, Dos Contes L001 (Capvespre d'un faune).** Paris. 4-February/1947. Engraving with burin, edition 250. [33,6 x 26,4] 33,8 x 26,5 cm. Fundació Palau, Caldes d'Estrac. (Inv 0000202). Also Classen Collection, Essen; Musée Picasso, Paris.

**OPP.47:034**; B.I:468; Ba:734.IIB; GC:44.1; BS.55:63p; GM.81\*:142; HK.65:132p; JP.66:141; MM.02\*:164p; PM.10:70p







**Buste de jeune fille.** Paris. 4-February/1947. Lithograph on Arches, edition 50. [49 x 38] 49,9 x 41,9 cm. Christie's. #58, 1322, 04/28/03. Also Mr. & Mrs. Thomas Freiberg Collection.

**OPP.47:056**; B.I:421; M:67; DK.61\*:158; MI.53\*:260

**Pigeon blanc sur fond noir.** Paris. 4-February/1947. Lithograph on Arches. 30,2 x 47,6 cm. Museu Picasso, Barcelona. Sabartés Collection, Also Kunstmuseum Picasso, Münster.

**OPP.47:070**; B.I:420; M:65; MPB:70.021; LB.58:90p; PF.10\*:43; TO.04\*:275





**Ramón Reventós, Dos Contes L003 (El capvespre d'un faune).** Cap d'Antibes. 5-February/1947. Drypoint. 33 x 25 cm. Fundació Palau, Caldes d'Estrac. (Inv 0000204). Also Museu Picasso, Barcelona; The Museum of Modern Art, NYC. (Inv 985.1964.3). The Louis E. Stern Collection; Biblioteca de Catalunya, Barcelona.

**OPP.47:081**; B.I:470; Ba:736.II; GC:44.3; MPB:70.741; FC.00\*:88; GM.81\*:144; JP.66:143; MG.92\*:76; PM.10:72p; TO.04\*:176

**Ramón Reventós, Dos Contes L002 (Les divers métiers du centaure: picador, cheval de carriole, maître d'école).** Paris. 5-February/1947. Burin, edition 250. [30,9 x 25,7] 34,3 x 26,2 cm. Fundació Palau, Caldes d'Estrac. (Inv 0000203). Also Classen Collection, Essen.

**OPP.47:106**; B.I:469; Ba:735.IIB; GC:44.2; GM.81\*:143; JP.66:140; MM.02\*:165p; PM.10:71p





**Nature morte, crâne et oursins.** Paris. 5-February.1947. Oil on canvas. 50 x 73 cm. Private collection.

**OPP.47:130**; PP.47:019; Z.XV:31

**Ramón Reventós, Dos Contes L004 (La vie d'un faune).** Paris. 6-February/1947. Engraving. 30,9 x 25,7 cm. The Museum of Modern Art, NYC. (Inv 985.1964.4). The Louis E. Stern Collection.

**OPP.47:268**; B.I:471; GC:44.4; GM.81\*:145; JB.96:95; JP.66:142; MF.10\*:148p





**Monument aux Espagnols morts pour la France (Étude)**. Paris. 9-February/1947. Wax crayons & pencil on an invitation card [Obverse of *Monument aux Espagnols morts pour la France (Étude)*]. 8 x 10 cm. Christie's. #251, 13487, 03/01/17.

**OPP.47:499**

**Monument aux Espagnols morts pour la France (Étude)**. Paris. 9-February/1947. Wax crayons & pencil on an invitation card [Reverse of *Monument aux Espagnols morts pour la France (Étude)*]. 8 x 10 cm. Christie's. #251, 13487, 03/01/17.

**OPP.47:500**





**La femme au fauteuil.** Paris. 16-February/1947. Lithograph in colors on wove paper, edition 50. 49,5 x 32 cm. Kunstmuseum Picasso, Münster. (Inv 177.69). Also The Museum of Modern Art, NYC. (Inv 274.1955); Werner-Coninx-Stiftung, Zürich.

**OPP.47:013**; B.I:422; M:69.B; GP.96:284p; JR.12:180p; MD.02\*:258p; MM.02\*:115p

---

**La femme au fauteuil.** Paris. 16-February/1947. Lithograph. 46,8 x 31,8 cm. Musée Picasso, Paris. Dation 1979.

**OPP.47:584**; M:69; MPP:3418bis





**Femme assise dans un fauteuil.** Paris. 18-February/1947.  
Oil on canvas. 92 x 72,7 cm. Private collection. Courtesy  
Nancy Whyte Fine Arts. Formerly Christie's. #136, 05/11/95.

**OPP.47:196**; PP.47:020a; JR.12:180p; UP.00:928;  
YB.99\*:176

**Femme assise dans un fauteuil (Françoise Gilot).**  
Paris. 18-February/1947. Oil on canvas. [129,5 x 95,9]  
130 x 97 cm. Helly Nahmad Collection, Monaco/London.

**OPP.47:285**; PP.47:020; Z.XV:39; CB.11\*:186p;  
HN.13\*:173p; JA.09\*:157p; LO.98b\*:n/a; MI.53\*:121;  
MJ.55\*:112; MM.02:25p; RT.99\*:42





**Femme en vert et mauve.** Vallauris. [19-Avril] 19-February/1947. Oil on canvas. [100] 100,3 x 80 cm. Sotheby's. #41, N07791, 05/08/02. Formerly Marina Picasso Collection. (Inv 13126).

**OPP.47:024**; PP.47:022; Z.XV:40; GS.85\*:97;  
JR.12\*:79p; KB.99\*:22; MU.86\*:n/a; TK.86\*:PC-25

---

**Femme assise.** Paris. 19-February/1947. Oil on canvas [OIC]. 81 x 54 cm. Private collection.

**OPP.47:536**; PP.47:021; Z.XV:38





**Femme assise.** Paris. 20-February/1947. Oil on canvas. 92 x 73 cm. Christine Ruiz-Picasso Collection. Courtesy Fundación Almine & Bernard Ruiz-Picasso para el Arte.

**OPP.47:150**; JA.09\*:155p; MG.03b\*:55

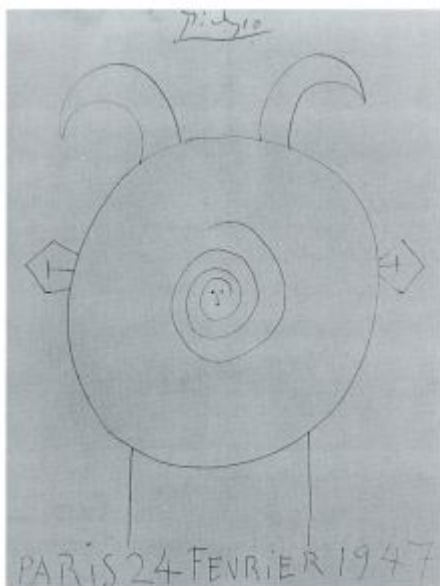
**Nature morte au coq et au couteau.**

Paris. [21-March] 21-February/1947. Oil on board. 101 x 130 cm. Museo Picasso, Málaga. On loan from Fundación Almine & Bernard Ruiz-Picasso para el Arte.

**OPP.47:144**; PP.47:027; Z.XV:42;  
GS.03:1.27; JB.92:312p; LU.93:355;  
NC.17\*:103; PF.10\*:30; SE.21\*:n/a;  
UP.00:908







**Le faune.** Paris. 24-February/1947. Pen & pencil on paper. 30 x 23,2 cm. Private collection. Formerly Sotheby's. #107, 10/21/87.

**OPP.47:602**; PP.47:023

**Luis de Góngora y Argote, Vingt Poèmes L004 (Femme de profil couronnée de fleurs).** Paris. [26-May] 26-February/1947. Aquatint in black ink, edition 276. 38 x 28 cm. The Museum of Modern Art, NYC. (Inv 988.1964.4). The Louis E. Stern Collection.

**OPP.47:101**; B.I:479; Ba:741; GC:51.04; GM.81\*:152; MI.53\*:321; WC.62\*:29





**Luis de Góngora y Argote, Vingt Poèmes L012 (Tête de femme)**. Paris. 26-February/1947. Aquatint, edition 275. 37,7 x 28 cm. Sotheby's. #268, L05161, 09/27/05.

**OPP.47:122**; B.I:487; Ba:749; GC:51.12; GM.81\*:160; LA.66:237.19; LB.58:108p; WC.62\*:29

---

**Luis de Góngora y Argote, Vingt Poèmes L016 (Femme au fichu)**. Paris. 26-February/1947. Sugar lift aquatint on Arches, edition 275. 41 x 30 cm. Scottish National Gallery of Modern Art, Edinburgh. (Inv A 35 / 2 / RPL 1/0011). Purchased with assistance of the National Heritage Memorial Fund and The Art Fund, 1994. Also Christie's. #344, 7063, 06/29/05.

**OPP.47:165**; B.I:491; Ba:753; GC:51.16; MPP:3557.16; ED.07\*:54; GM.81\*:164; LD.15\*:n/a; WC.62\*:29





**Luis de Góngora y Argote, Vingt Poèmes L022 (Femme aux longs cheveux)**. Paris. 26-February/1947 [1948]. Aquatint, edition 275. 45 x 29,8 cm. Sotheby's. #274, L05161, 09/27/05. Also Beinecke Rare Book and Manuscript Library. Yale University. Gift of John Hay Whitney.

**OPP.47:166**; B.I:497; Ba:759; GC:51; GC:51.22; GM.81\*:170; JL.71:261p; SF.09:174p; WC.62\*:29

---

**Luis de Góngora y Argote, Vingt Poèmes L018 (Tête de femme au long cou)**. Paris. 26-February/1947. Aquatint, edition 275. 37,5 x 27,5 cm. The Museum of Modern Art, NYC. (Inv 988.1964.18). The Louis E. Stern Collection.

**OPP.47:177**; B.I:493; Ba:755; GC:51.18; GM.81\*:166; WC.62\*:29





**Buste de femme de face (II)**. Paris. 26-February/1947. Sugar-lift aquatint & hand-biting, on cream wove paper [Variant of *Luis de Góngora y Argote, Vingt Poèmes L012 (Tête de femme)*]. 37,8 x 27,9 cm. Bonhams. #66, 25295, 10/15/19.

**OPP.47:568**

**Luis de Góngora y Argote, Vingt Poèmes L040 (Femme brune aux cheveux lisses)**. Paris. 27-February/1947. Aquatint, edition 275. 38 x 28 cm. Sotheby's. #219, N08193, 04/28/06.

**OPP.47:083**; B.I:515; Ba:777; GC:51.40; GM.81\*:188; WC.62\*:29





**Luis de Góngora y Argote, Vingt Poèmes L036 (Femme brune de tres-quarts)**. Paris. 27-February/1947. Aquatint, edition 275. [40,9 x 30,7] 37,5 x 27,5 cm. The Museum of Modern Art, NYC. (Inv 988.1964.36). The Louis E. Stern Collection.

**OPP.47:095**; B.I:511; Ba:773; GC:51.36; BH.10\*:n/a; GM.81\*:184; WC.62\*:29

**Luis de Góngora y Argote, Vingt Poèmes L002 (Portrait de Luis de Góngora y Argote, d'après Velázquez II)**. Paris. 27-February/1947 [1948]. Aquatint, edition 275. 37,5 x 27,7 cm. Christie's. #246, 7096, 11/29/05. Also Beinecke Rare Book and Manuscript Library. Yale University. Gift of John Hay Whitney.

**OPP.47:096**; B.I:477; Ba:739; GC:51.02; MPP:3557.2; GM.81\*:150; LA.66:237.3; PP.19:97p; RI.03b:201p; SF.09:174p; WC.62\*:29





**Luis de Góngora y Argote, Vingt Poèmes L026 (Femme aux cheveux bouclés)**. Paris. 27-February/1947. Aquatint, edition 275. 37,5 x 27,5 cm. The Museum of Modern Art, NYC. (Inv 988.1964.26). The Louis E. Stern Collection.

**OPP.47:097**; B.I:501; Ba:763; GM.81\*:174; WC.62\*:29

**Luis de Góngora y Argote, Vingt Poèmes L006 (Femme blonde de profil)**. Paris. 27-February/1947. Aquatint, edition 275. 37,5 x 27,5 cm. The Museum of Modern Art, NYC. (Inv 988.1964.6). The Louis E. Stern Collection.

**OPP.47:169**; B.I:481; Ba:743; GC:51.06; GM.81\*:154; WC.62\*:29



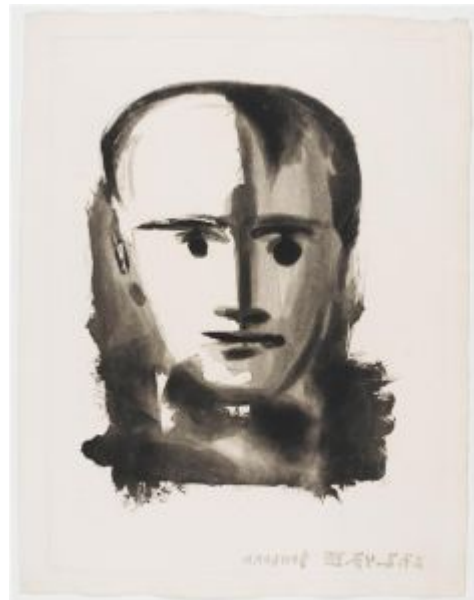


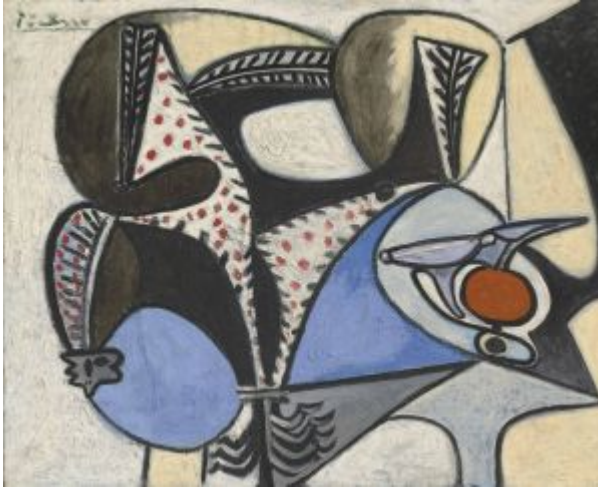
**Luis de Góngora y Argote, Vingt Poèmes (Portrait d'homme à la fraise).** Paris. 27-February/1947. Aquatint on Montval Vélin paper. 40,7 x 29,8 cm. Musée Picasso, Paris. Dation 1979.

**OPP.47:524**; MPP:2985

**Luis de Góngora y Argote, Vingt Poèmes (Portrait d'homme à la mèche).** Paris. 27-February/1947. Aquatint. 40,7 x 298 cm. Musée Picasso, Paris. Dation 1979.

**OPP.47:525**; MPP:2986





**Le coq saigné.** Paris. 27-February/1947, 13-October/1948. Oil on plywood. 81 x 99,9 cm. Christie's. #8, 15469, 02/27/18.

**OPP.47:530**; AT.99:196p; BA.15\*:n/a; BA.68a\*:1; CR.74:1066; VE.13\*:57p

---

**Picador au chapeau.** Paris. 3-March/1947. Aquatint. 30,2 x 40,9 cm. Christie's. #274, 9512, 10/31/00.

**OPP.47:007**; B.I:1351







**Picador et torero dans l'arène.** Paris. 3-March/1947. Sugar-lift aquatint with hand-biting, on a bevelled copper-plate, printed on Pur fil Marais wove paper. [29,8 x 41] 38,5 x 50 cm. Museo Picasso, Málaga. Also Christie's. #275, 9512, 11/01/00.

**OPP.47:008**; B.I:1352; Ba:793; MPM:166; PT.05\*:50

---

**Picador au chapeau.** Paris. 3-March/1947. Aquatint on Arches. 29,9 x 40,9 cm. Christie's. #550, 1226, 04/29/03.

**OPP.47:076**; Ba:782.II





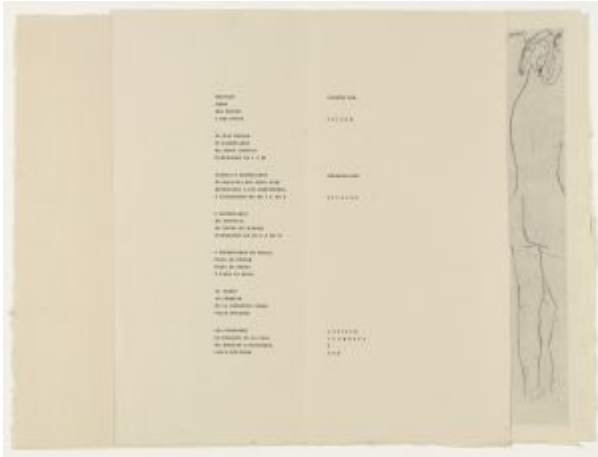
**Femme debout.** Paris. 3-March/1947. Etching, edition 66  
[Alternate version of *Femme debout (Iliad, Escrito)*]. 36,2 x 24 cm.  
Sotheby's. #323, PF6025, 10/11/06.

**OPP.47:102**; BO.00\*:35

**La pique.** Paris. 3-March/1947. Lift ground  
aquatint, edition 15. 29,7 x 40,6 cm.  
Galerie Fetzler. 2008.

**OPP.47:157**; B.I:1350; Ba:781.b





**Femme debout (Iliazd, Escrito)**. Paris. 3-March/1947. Etching. 36,2 x 24 cm. The Museum of Modern Art, NYC. (Inv 989.1964.2). The Louis E. Stern Collection.

**OPP.47:235**; Ba:785.06; GC:48.2

**Femme aux feuilles et arabesque (Iliazd, Escrito)**. Paris. 3-March/1947. Etching [Variant of *Femme aux feuilles et arabesque (Iliazd, Escrito)*]. 31,8 x 13 cm. Christie's. #92, 2593, 10/30-31/12. Formerly Mildred S. and Herbert C. Lee Collection.

**OPP.47:310**; B.I:465; Ba:786.IIb; GC:48.3; BO.00\*:36





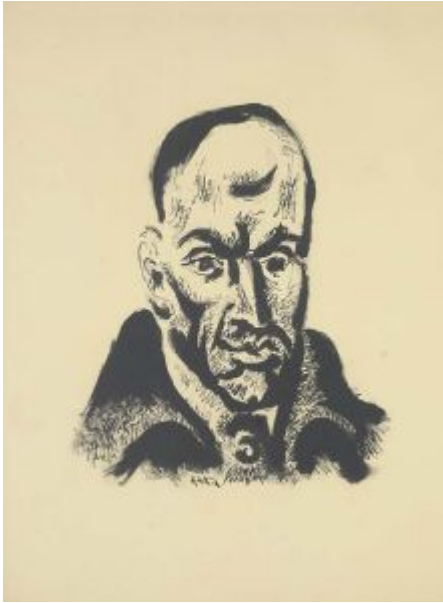
**Pismo, Carmen.** Paris. 3-March/1947. Etching with engraving. 38,5 x 28 cm. Sotheby's. #135, L19164, 10/17/19. Formerly Marina Picasso Collection.

**OPP.47:605**; Ba:785; Ba:807

**Femme aux feuilles et arabesque (Iliazd, Escrito).** Paris. 3-March/1947. Etching. 33,2 x 34,8 cm. Classen Collection, Essen. Also Christie's. #135, 5059, 04/29/04.

**OPP.47:077**; B.I:466; Ba:786.IBb; GC:48.5; BO.00\*:38-39; MF.10\*:200p; MM.02\*:116p





**Portrait de Luis de Góngora y Argote.** Paris. 5-March/1947.  
Lithograph on Arches, edition 50. [39 x 32] 39,8 x 32,8 cm.  
Museu Picasso, Barcelona. Also Christie's. #61, 1322, 04/28/03.

**OPP.47:046**; B.I:424; M:70; MPB:70.176; CR.01:43p;  
GP.96:288p; WC.62\*:29

---

**Tête de jeune fille (I).** Paris. 5-March/1947.  
Lithograph. 64,8 x 49,7 cm. Sotheby's. #190,  
N08849, 04/26/12.

**OPP.47:304**; M:68.01





**Tete de jeune fille (IV)**. Paris. 5~10-March/1947.  
Lithograph on Arches. 49,4 x 39,3 cm. Christie's. #59, 1322,  
04/28/03.

**OPP.47:073**; B.I:423; M:68.04

**Le verre**. Paris. 8-March/1947. Oil on  
burlap. [38 x 46] 38,3 x 46,6 cm.  
Sotheby's. #24, N09567, 11/14/16.

**OPP.47:117**; PP.47:025; Z.XV:44;  
NY.48c\*:n/a





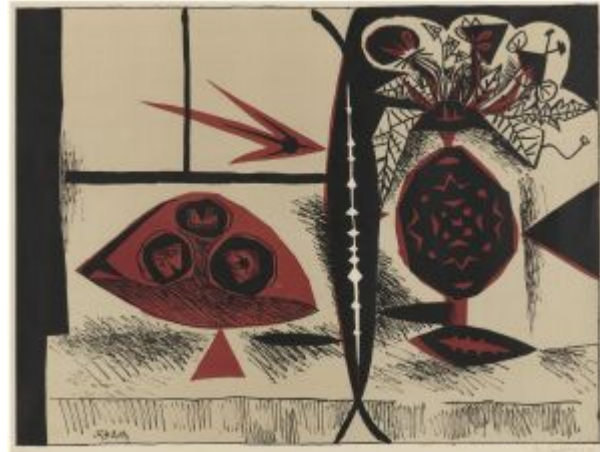
**Grande nature morte au compotier (II)**. Paris. 10-March/1947. Lithograph on Arches. 47,3 x 61,3 cm. Philbrook Museum of Art, Tulsa. Formerly Christie's. #64, 1322, 04/28/03.

**OPP.47:063**; B.I:425; M:73

---

**Composition au vase de fleurs**. Paris. 10-March/1947. Lithograph on Arches, edition 50. 45,6 x 60,2 cm. Christie's. #65, 1322, 04/28/03.

**OPP.47:072**; B.I:426; M:74; GP.96:286p





**Pommes, verre et couteau (Jaume Sabartés, Dans L'atelier de Picasso)**. Paris. 11-March/1947. Ink & wash on lithographic paper, edition 50. 28 x 17 cm. Sotheby's. #147, L01173, 11/08/01.

**OPP.47:020**; B.I:429; GC:88.09; M:76

**Composition en trois couleurs (Jaume Sabartés, Dans L'atelier de Picasso)**. Paris. 11-March/1947. Lithograph in colors on Japan paper. 43,7 cm x 32,5 cm. Christie's. #66, 1322, 04/28/03.

**OPP.47:028**; B.I:428; GC:88.03; M:75; NY.65f\*:8p







**Le couteau et la pomme (Jaume Sabartés, Dans L'atelier de Picasso)**. Paris. 11-March/1947. Lithograph on Arches. 25,3 x 27,4 cm. The Museum of Modern Art, NYC. (Inv 1013.1964.12). The Louis E. Stern Collection.

**OPP.47:041**; B.I:430; GC:88.04; M:78

**Pigeonneau dans son nid**. Paris. 11-March/1947. Lithograph on Arches. 22,6 x 39,5 cm. Christie's. #62, 1322, 04/28/03.

**OPP.47:057**; B.I:427; M:71





**Le couteau et la pomme.** Paris. 11-March/1947. Lithograph on Arches [Alternate version of *Le couteau et la pomme* (Jaume Sabartés, *Dans L'atelier de Picasso*)]. 25,3 x 27,4 cm. The Museum of Modern Art, NYC. (Inv 1013.1964.4). The Louis E. Stern Collection.

**OPP.47:556**

**Composition au verre à pied (Jaume Sabartés, Dans L'atelier de Picasso).** Paris. 12-March/1947. Lithograph. 44,3 x 32,5 cm. Christie's. #68, 1322, 04/28/03.

**OPP.47:027**; B.I:431; GC:88.10; M:77





**La petite grappe (La grappe de raisins) (Jaume Sabartés, Dans L'atelier de Picasso)**. Paris. 14-March/1947. Lithograph on wove paper. 4,8 x 20 cm. The Museum of Modern Art, NYC. (Inv 1013.1964.13). The Louis E. Stern Collection.

**OPP.47:042**; B.I:432; GC:88.05; M:79

**Femme au fauteuil (Iliazd, Escrito)**. Paris. 14-March/1947. Burin. 32,6 x 14 cm. The Museum of Modern Art, NYC. (Inv 989.1964.4). The Louis E. Stern Collection.

**OPP.47:103**; B.I:464; Ba:787; GC:48.4; BO.00\*:37; MM.02\*:117p





**La petite grappe (La grappe de raisins)**. Paris. 14-March/1947. Lithograph on wove paper [Alternate version of *La petite grappe (La grappe de raisins)* (*Jaume Sabartés, Dans L'atelier de Picasso*)]. 4,8 x 20 cm. The Museum of Modern Art, NYC. (Inv 1013.1964.5). The Louis E. Stern Collection.

**OPP.47:557**

**Nature morte**. Paris. 15-March/1947. Oil on canvas. 12 x 18 cm. Christie's. #741, 20182, 11/13/21.

**OPP.47:332**





**Nature morte.** Paris. 15-March/1947. Oil & pencil on canvas. 12 x 18 cm. Christie's. #740, 20182, 11/13/21.

**OPP.47:528**

**Pigeon et ses petits.** Paris. 19-March/1947. Lithograph on Arches, edition 50. 49,5 x 64,5 cm. Christie's. #174, 8575, 09/12/01.

**OPP.47:015;** B.I:433; M:72; LB.58:90p; NY.47c\*:24





**David et Bethsabée (d'après Cranach) (III.II).** Paris. 20-March/1947. Lithograph. 65,7 x 49 cm. Musée Picasso, Paris. Dation 1979.

**OPP.47:198**; M:109.03.B; MPP:3423; SG.96:4.16; UP.00:934



**David et Bethsabée (d'après Cranach) (III.I).** Paris. 20-March/1947. Lithograph. 65,5 x 43,8 cm. Musée Picasso, Paris. Dation 1979.

**OPP.47:526**; M:109.03.A; MPP:3421



**Silhouette de fillette.** Paris. [Spring/1947]. Oil on canvas. 61,5 x 46 cm. Private collection.

**OPP.47:188**; WS.95a\*:126

**Volaille et couteau sur une table.** Paris. 21-March/1947. Oil on canvas. 81 x 100 cm. Private collection. Formerly Christie's. #29, 03/10/97; Victor W. Ganz Collection, NY.

**OPP.47:004**; PP.47:026; Z.XV:41; CO.81\*:180; EM.55:225p; GB.87:174; GP.96:281p; JB.92\*:128; JC.56:415; JR.62\*:6.17; KS.62:44; LU.93:391p; MF.97:28p; MJ.55\*:113; MU.55\*:103; NY.49f\*:n/a; RP.60\*:180





**Cage avec chouette.** Paris. 21-March/1947. Oil on wood. 80 x 100 cm. Museo Picasso, Málaga. On temporary loan from Fundación Almine & Bernard Ruiz-Picasso para el Arte. (Inv 13129).

**OPP.47:145**; CP.95:84p; DP.20\*:128; GS.03:1.28; LW.15\*:199p

---

**Nature morte au citron.** Paris. 21-March/1947. Oil on canvas. [14 x 17,8] 14,4 x 18 cm. Christie's. #346, 1534, 06/25/14. Formerly Christie's. #28, 2410, 05/04/10; Mr. and Mrs. Sidney F. Brody Collection.

**OPP.47:258**







**Nature morte à l'oiseau en cage.** Paris. 22-March/1947. Oil on canvas. [60 x 73] 59,9 x 72,7 cm. Christie's. #412, 15006, 11/14/17. Formerly Helly Nahmad Collection, Monaco/London.

**OPP.47:340**; HN.13\*:113p; JA.09\*:154p; LO.83d\*:n/a

---

**La dormeuse.** Paris. 23-March/1947. Lithograph on wove paper. 49,7 x 65,2 cm. Christie's. #72, 1322, 04/28/03.

**OPP.47:044**; B.I:435; M:81; CH.04\*:14





**Couple.** Paris. 23-March/1947. Lithograph on Arches. 49,2 x 64,1 cm. Musée Cantini, Marseille. (Inv 49.1.6). Also Christie's. #71, 1322, 04/28/03.

**OPP.47:058**; B.I:434; M:80; MPA:1981.6.6; NY.47c\*:23

---

**Nature morte avec oiseau en cage.**

Paris. 24-March/1947. Oil on canvas. [73 x 92] 60 x 73 cm. Christie's. #540, 9224, 11/09/99.

**OPP.47:118**; PP.47:028; Z.XV:43; JR.62\*:6.8; LO.59c\*:59; LO.69\*:47; SA.85\*:n/a





**Nature morte à l'oiseau en cage.** Paris. 24-March/1947. Oil on canvas [OïC]. 60 x 73 cm. Private collection. Formerly Christie's. #540, 11/09/99.

**OPP.47:119**; PP.47:028a

**Profil de femme.** Vallauris. 26-March/1947. Lithograph on Arches, edition 50. 51 x 28,4 cm. Christie's. #248, 6608, 07/03/02.

**OPP.47:019**; B.I:436; M:82





**La femme au collier.** Paris. 29-March/1947. Lithograph on Arches. 58,6 x 40,5 cm. Mildred Lane Kemper Art Museum (Washington University, St. Louis). Gift of Alvin S. Novack, 1962. The Saint Louis Art Museum. (Inv WU.3966). Also (Inv 383:1955). Museo Picasso, Málaga. On temporary loan from Fundación Almine & Bernard Ruiz-Picasso para el Arte.

**OPP.47:047**; B.I:438; M:84; DP.20\*:129; VO.16\*:109p

---

**Profil sur fond noir.** Paris. 29-March/1947. Lithograph on Arches. 53,5 x 36,3 cm. Christie's. #74, 1322, 04/28/03.

**OPP.47:064**; B.I:437; M:83; TK.51\*:n/a





**David et Bethsabée (d'après Cranach) (I)**. Paris. 30-March/1947. Lithograph on Arches, edition 50. 65,1 x 49 cm. The Museum of Modern Art, NYC. Mrs. Bertram Smith / Louise Reinhardt Smith Fund.

**OPP.47:014**; B.I:439; M:109.01.B; GM.00:109; GM.81\*:XVII; IC.05:202p; NY.47c\*:25; PP.20\*:306; SD.13a\*:187; SG.96:4.14; WL.17\*:19; WR.72\*:170p; WR.80\*:395p



**David et Bethsabée (d'après Cranach) (II)**. Paris. 30-March/1947. Lithograph on wove paper, edition 50. 65,5 x 48,8 cm. The Museum of Modern Art, NYC. (Inv 254.1947). Acquired through the Lillie P. Bliss Bequest. Also Musée Picasso, Paris; Christie's. #239, 1138, 11/05/02; The British Museum, London. (Inv 1966.7.23.4).

**OPP.47:033**; B.I:440; M:109.02.B; AH.13\*:112; GB.87:210; GM.00:203; GM.81\*:XVIII; GP.96:283p; HN.13:211p; JL.71:261p; LW.15\*:214p; NY.47c\*:26; RR.09\*:36; SG.96:4.15; UP.00:933; WR.72\*:170p; WR.80\*:395p



**David et Bethsabée (d'après Cranach) (IV).** Paris. 30-March/1947. Lithograph. 65,7 x 49 cm. Winterberg Kunst. #1170, 10/25/2008.

**OPP.47:199**; B.I:441; M:109.04.B; AH.13\*:113; GM.00:205; GM.81\*:XIX; GP.96:282p; IC.05:203p; ME.82a\*:117; NY.47c\*:27; PD.09:408p; SD.13a\*:188; SG.96:4.17; UP.00:935; WR.80\*:395p; WW.91:476p

---

**David et Bethsabée (d'après Cranach) (V.III).** Paris. 30-March/1947. Lithograph. 64,8 x 49 cm. Musée Picasso, Paris.

**OPP.47:302**; M:109.05.C; PE.01a:32p; SG.96:4.19





**David et Bethsabée (d'après Cranach) (V.II)**. Paris. 30-March/1947. Lithograph. 65,7 x 50 cm. Musée Picasso, Paris. Dation 1979.

**OPP.47:399**; M:109.05.B; MPP:3426; GM.00:207;  
PD.09:408p; SF.09:184p

**David et Bethsabée (d'après Cranach) (V.I)**. Paris. 30-March/1947. Lithograph. 65,1 x 49,1 cm. Musée Picasso, Paris. Dation 1979.

**OPP.47:404**; M:109.05.A; MPP:3425; GM.00:206;  
HN.13:211p





**David et Bethsabée (d'après Cranach) (III.III)**. Paris. 30-March/1947. Lithograph. 66,1 x 50,2 cm. Musée Picasso, Paris. Dation 1979.

**OPP.47:529**; M:109.03C; MPP:3422; GM.00:204

**David et Bethsabée (d'après Cranach) (I)**. Paris. 30-March/1947. Lithograph. 64 x 49 cm. Musée Picasso, Paris. Dation 1979.

**OPP.47:585**; M:109.01; MPP:3419







**David et Bethsabée (d'après Cranach) (II)**. Paris. 30-March/1947. Lithograph. 64 x 49 cm. Musée Picasso, Paris. Dation 1979.

**OPP.47:586**; M:109.02; MPP:3420

**David et Bethsabée (d'après Cranach) (IV)**. Paris. 30-March/1947. Lithograph. 64 x 49 cm. Musée Picasso, Paris. Dation 1979.

**OPP.47:587**; M:109.04; MPP:3424





**David et Bethsabée (d'après Cranach) (VI.I).** Paris. 30-March/1947~30-March/1948. Lithograph. 64 x 49 cm. Musée Picasso, Paris. Dation 1979.

**OPP.47:588**; M:109.06.A; MPP:3427; GA.14:129p;  
GM.00:208; SG.96:4.21; UP.00:936



**David et Bethsabée (d'après Cranach) (VII).** Paris. 30-March/1947~6-March/1949. Lithograph. 65,8 x 50,2 cm. Christie's. #94, 1322, 04/28/03.

**OPP.47:593**; M:109.07.B; GM.00:209; SG.96:4.22



**David et Bethsabée (d'après Cranach) (VII).** Paris. 30-March/1947~6-March/1949. Lithograph. [64 x 49] [65,8 x 50,2] 64,8 x 49 cm. Musée Picasso, Paris. Dation 1979.

**OPP.47:589**; M:109.07; MPP:3428



**David et Bethsabée (d'après Cranach) (VIII).** Paris. 30-March/1947~10-April/1949. Lithograph. [64 x 49] [64,8 x 49] 64,4 x 48,5 cm. Musée Picasso, Paris. Dation 1979.

**OPP.47:590**; M:109.08; MPP:3429; GM.00:210; JR.12:187p; PP.20\*:308; RR.09\*:35; SG.96:4.23



**David et Bethsabée (d'après Cranach) (IX)**. Paris. 30-March/1947~12-April/1949. Lithograph. 64 x 49 cm. Musée Picasso, Paris. Dation 1979.

**OPP.47:591**; M:109.09; MPP:3430

**David et Bethsabée (d'après Cranach) (IX)**. Paris. 30-March/1947~12-April/1949. Lithograph. [65,8 x 50,2] 64,8 x 49 cm. Kunstmuseum Picasso, Münster. Christie's. #94, 1322, 04/28/03.

**OPP.47:594**; M:109.09.B; GB.14\*:136; GM.00:211; IC.05:203p; LW.15\*:215p; PE.01a:32p; SG.96:4.22





**David et Bethsabée (d'après Cranach) (X)**. Paris. 30-March/1947~17-April/1949. Lithograph. 64 x 49 cm. Musée Picasso, Paris. Dation 1979.

**OPP.47:592**; M:109.10; MPP:3431; GM.00:213; SG.96:4.26

**David et Bethsabée (d'après Cranach) (VI.II)**. Paris. 30-March/1947~9-May/1949. Lithograph. 64 x 49 cm. Musée Picasso, Paris. Dation 1979.

**OPP.47:548**; M:109.06.B; MPP:3432





**Nature morte au pot de grès.** Paris. 31-March/1947. Lithograph on Arches. 46,3 x 59,6 cm. Christie's. #77, 1322, 04/28/03.

**OPP.47:054**; B.I:443; M:86; NY.47c\*:28

---

**Le hibou.** Paris. 1-April/1947. Oil on canvas. 100 x 81 cm. Private collection.

**OPP.47:339**; JA.09\*:150p; JV.06\*:107p





**Grand Profil.** Paris. 2-April/1947. Lithograph on Arches. 61,2 x 43 cm. Christie's. #76, 1322, 04/28/03.

**OPP.47:048**; B.I:444; M:85

---

**Femme dans un fauteuil.** Paris. 2-April/1947. Oil on canvas. 92 x 72,5 cm. Musée Picasso, Antibes. On loan from Musée Picasso, Paris, 1991. Jacqueline Roque Picasso Collection. Dation 1990.

**OPP.47:099**; MPP:1990.23; PP.47:030; Z.XV:50; BD.16\*:74; BE.09\*:66; EC.16\*:151; GR.90\*:20; HN.13:153p; JA.09\*:156p; JV.06\*:159p; MG.03b\*:56; MM.02:23p; ND.01\*:34; PA.19e\*:62





**Femme assise (Françoise)**. Paris. 2-April/1947. Oil on canvas. 99,9 x 80,7 cm. Yale University Art Gallery. (Inv 1980.12.21). Katharine Ordway Collection, New Haven.

**OPP.47:306**; PP.47:029; Z.XV:49; EG.66\*:13p;  
JA.09\*:158p; NY.48c\*:n/a; SF.09\*:23; VO.16\*:106p;  
WC.62\*:23

---

**Nature morte à la lampe**. Paris. 3-April/1947. Oil on canvas. 73 x 92 cm. Private collection.

**OPP.47:202**; PP.47:031; Z.XV:47;  
LE.07\*:31; MI.53\*:120; PF.10\*:29;  
TO.04\*:105







**Nature morte à la lampe et au crustacé.** Paris. 3-April/1947. Oil on canvas [Oic]. 73 x 92 cm. Private collection.

**OPP.47:537**; PP.47:032; Z.XV:48

**Nature morte sur une table.** Paris. 4-April/1947. Oil on canvas. [100] 99,1 x 80 cm. Sotheby's. #71, NY7217, 11/16/98. Formerly Galerie Rosengart, Lucerne.

**OPP.47:131**; PP.47:033; AT.57\*:n/a; GR.71:7; KG.71:27; KG.85:27; LC.71\*:n/a; WC.62\*:n/a; WW.91:473p; ZU.64\*:n/a





**Nature morte a la cafetière.** Paris. 6-April /1947. Oil on canvas. 81 x 100 cm. Helly Nahmad Collection, Monaco/London. Formerly Marlborough Fine Art, London; Sotheby's. #143, N07990, 05/06/04; Christie's. #64, 05/15/90.

**OPP.47:085**; PP.47:034; Z.XV:45; CB.11\*:185p; EG.66\*:14p; HN.13\*:117p; JA.09\*:159p; NY.48c\*:8; TO.04\*:101; WS.93\*:92

---

**Nature morte.** Paris. 10-April/1947. Oil on canvas. 81 x 100 cm. Catherine Hutin-Blay Collection, Paris. Formerly Jacqueline Roque Picasso Collection.

**OPP.47:002**; PP.47:035; Z.XV:46; GL.89\*:15; JA.09\*:160p; JV.06\*:119p; LE.07\*:32; MM.85a\*:36; TO.04\*:106; WW.91:466p





**Nature morte, table et cafetière gris foncé.** Paris. 10-April/1947. Oil on canvas. 100 x 81 cm. Claude Ruiz-Picasso Collection.

**OPP.47:151**; CG.12\*:90; JA.09\*:161p; JR.10\*:61p; JV.06\*:116p; MG.03b\*:57; NY.95f\*:25p; TO.04\*:104; WS.93\*:81

**Visage gris foncé au chapeau blanc II.** Paris. 12-April/1947. Oil on canvas. 92 x 73 cm. Kunstmuseum Liechtenstein. (Inv P76T). Hilti Art Foundation. Acquired 2017.

**OPP.47:152**; PP.47:038; Z.XV:61; CG.12\*:86; JA.09\*:163p; JV.06\*:118p; MG.03b\*:58; NY.95f\*:27p





**Portrait de femme au chapeau vert.** Paris. 13-April/1947. Oil on canvas. 92 x 73 cm. The Albertina, Vienna. (Inv GE100DL). Herbert Batliner Collection. (Inv G.255).

**OPP.47:098**; PP.47:037; Z.XV:52; JA.09\*:165p; MA.86\*:28; PF.10\*:10



**Femme assise.** Paris. 13-April/1947. Oil on canvas. 92 x 73 cm. Private collection.

**OPP.47:286**; PP.47:036; Z.XV:51; GL.89\*:16; MI.53\*:122



**Visage.** Paris. 16-April/1947. Oil on canvas. 73 x 60 cm.  
Fundación Almine & Bernard Ruiz-Picasso para el Arte.

**OPP.47:153**; CG.12\*:91; GA.00\*:70; JA.09:38p;  
MG.03b\*:59



**Tête à la coiffe II.** Paris. 17-April/1947. Oil on  
canvas. 73 x 60 cm. Private collection.

**OPP.47:154**; CG.12\*:92; JA.09\*:162p;  
JR.10\*:59p; JR.12\*:75p; JV.06\*:117p; MG.03b\*:60;  
NY.95f\*:29p



**Buste de femme.** Paris. 17-April/1947. Oil on plywood. 73 x 60 cm. Marina Picasso Collection. (Inv 13143). Courtesy Galerie Jan Krugier, Geneva.

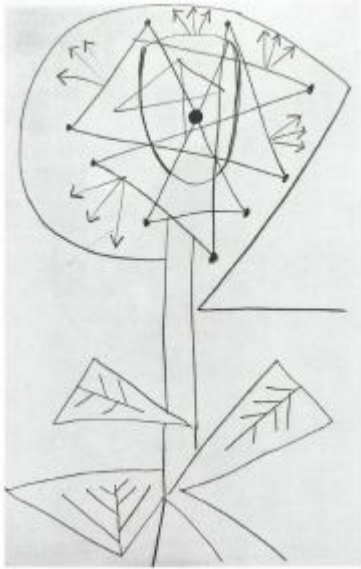
**OPP.47:282**; PP.47:041; GS.85\*:98; KB.99\*:21; PD.02\*:62

---

**Études.** Paris. 17-April/1947. Graphite. 34 x 23 cm. Private collection.

**OPP.47:538**; PP.47:039; Z.XV:53





**Études.** Paris. 17-April/1947. Graphite. 34 x 23 cm. Private collection.

**OPP.47:539**; PP.47:040; Z.XV:54

**Le taureau noir.** Paris. 20-April/1947.  
Lithograph on Arches, edition 50. 40,8 x  
59,8 cm. Christie's. #2, 6683, 10/09/02.

**OPP.47:031**; B.I:446; M:89; BS.55:106p;  
PM.10:96p





**Nature morte aux verre et fleurs.** Paris. 20-April/1947. Lithograph on Arches. 38,8 x 54,8 cm. Christie's. #78, 1322, 04/28/03.

**OPP.47:065**; B.I:445; M:87

---

**Figure.** Paris. 20-April/1947. Lithograph on Arches. 74 x 56 cm. Christie's. #79, 1322, 04/28/03.

**OPP.47:066**; M:88.B; JR.12:74p







**Figure.** Paris. 20-April/1947. Lithograph. 74 x 56,2 cm. Musée Picasso, Paris. Dation 1979.

**OPP.47:583**; M:88; MPP:3370

---

**Le petit pot de fleurs (Jaume Sabartés, Dans L'atelier de Picasso).** Cannes. 21-April/1947. Lithograph. 44,3 x 32,6 cm. Christie's. #83, 1322, 04/28/03.

**OPP.47:009**; B.I:448; GC:88.12; M:92





**Cruche noire.** Paris. 21-April/1947. Lithograph on wove paper. 15,9 x 24,1 cm. Christie's. #81, 1322, 04/28/03.

**OPP.47:067;** M:90

---

**La tasse et la pomme (Jaume Sabartés, Dans L'atelier de Picasso).** Paris. 21-April/1947. Lithograph on Arches, edition 50. [15,8 x 24,8] 16,1 x 24,6 cm. Christie's. #82, 1322, 04/28/03.

**OPP.47:084;** B.I:447; GC:88.11; M:91





**Fleurs dans un verre (Fernand Mourlot, Picasso Lithographe II)**. Paris. 22-April/1947. Lithograph. 23 x 15 cm. The Museum of Modern Art, NYC. (Inv 208.1951). The Louis E. Stern Collection. Also Saarlandmuseum, Saarbrücken.

**OPP.47:005**; B.I:450; GC:60.2; M:98; BS.55:104p; GM.81\*:138; RM.07\*:58p

---

**Fleurs dans un verre V**. Paris. 22-April/1947. Lithograph on Arches. 24,1 x 15 cm. Christie's. #84, 1322, 04/28/03.

**OPP.47:040**; B.I:449; M:93





**Verre avec fleurs (Jaume Sabartés, Dans L'atelier de Picasso)**. Paris. 22-April/1947. Transfer lithograph. 24,5 x 15,3 cm. The Museum of Modern Art, NYC. (Inv 1013.1964.16). The Louis E. Stern Collection.

**OPP.47:266**; GC:88.13; M:97

**Fleurs dans un verre**. Paris. 22-April/1947. Lithograph on Arches paper. 25,4 x 16,5 cm. Christie's. #208, 3756, 07/14-15/15.

**OPP.47:448**; M:99





**Fleurs dans un verre.** Paris. 22-April/1947. Lithograph on Rives. 24,1 x 15 cm. Christie's. #51, 3777, 10/27-28/15.

**OPP.47:484;** M:94

**Fleurs dans un verre.** Paris. 22-April/1947. Lithograph on Rives. 24,1 x 15 cm. Christie's. #51, 3777, 10/27-28/15.

**OPP.47:485;** M:95





**Fleurs dans un verre.** Paris. 22-April/1947. Lithograph on Rives. 24,1 x 15 cm. Christie's. #51, 3777, 10/27-28/15.

**OPP.47:486**; M:96

---

**Fleurs dans un verre.** Paris. 22-April/1947. Lithograph [Alternate version of *Fleurs dans un verre* (*Fernand Mourlot, Picasso Lithographe II*)]. 23,5 x 15,7 cm. The Museum of Modern Art, NYC. (Inv 994.1964.B1). The Louis E. Stern Collection.

**OPP.47:555**





**Bébé à la robe à petits pois.** Paris. 26-April/1947. Oil on plywood. 130 x 97 cm. Private collection.

**OPP.47:190**; PP.47:042; Z.XV:57; WS.95a\*:124

---

**Bébé avec un nœud papillon dans les cheveux.** Paris. 28-April/1947. Oil on plywood. 130 x 97 cm. Private collection.

**OPP.47:100**; PP.47:043; Z.XV:58





**Petite fille avec un petit train à la main.** Paris. 30-April/1947.  
Oil on canvas. 33 x 23,8 cm. Private collection.

**OPP.47:612**; NY.95f\*:31p

---

**Jeune enfant au seau.** [Paris]. 1-May/1947. Oil on board. 130 x 97 cm. Fundación Almine & Bernard Ruiz-Picasso para el Arte.

**OPP.47:156**; PP.47:044; Z.XV:55; GA.00\*:73;  
GS.03:2.14







**Fillette a la poupée.** Paris. 2-May/1947. Oil on canvas. 73 x 54 cm. Private collection. Formerly Sotheby's. #56, 05/11/93.

**OPP.47:243**; PP.47:045; BS.86a\*:34; LZ.88\*:n/a

---

**Portrait de Françoise Gilot.** Paris. 2-May/1947~26-December/1948. Oil on canvas. 65 x 45,9 cm. Christie's. #5A, 15977, 11/11/18.

**OPP.47:552**; LO.03b\*:63; WA.15\*:33p





**La fillette à la poupée.** [Paris]. 3-May/1947. Oil on canvas. 92 x 73 [72] cm. Sotheby's. #53, L08002, 02/05/08. Formerly Christie's. #42, 9636, 05/09/01; Formerly Victor W. Ganz Collection.

**OPP.47:010**; PP.47:046; Z.XV:56; EG.66\*:59p; HK.65:176p; KG.71:91; KG.85:91; MF.97:31p; NY.48c\*:n/a

---

**Femme endormie et femme accroupie.** Paris. 8-May/1947. Pen & India ink on paper. [32 x 51] 44,1 x 65,7 cm. Christie's. #189, 17155, 05/14/19. Formerly Christie's. #107, 15978, 11/12/18.

**OPP.47:265**; PP.47:048; Z.XV:63





**Personnage endormi et femme accroupie.**

Paris. 8-May/1947. India ink on paper. 49 x 64 cm.  
Private collection. Formerly Christie's. #677,  
03/21/81.

**OPP.47:307**; PP.47:052; Z.XV:67

---

**Femme endormie et femme au collier accroupie.** Paris. 8-May/1947. India ink on paper. 50 x 65 cm. Private collection.

**OPP.47:540**; PP.47:047; Z.XV:62





**Femme endormie et femme accroupie III.**

Paris. 8-May/1947. India ink on paper. 50 x 65 cm.  
Galerie Rosengart, Luzern.

**OPP.47:541**; PP.47:049; Z.XV:64

---

**Femme endormie et femme ailée accroupie IV.** Paris. 8-May/1947. India ink on paper. 50 x 65 cm. Private collection. Formerly Sotheby's. #292, 11/13/96.

**OPP.47:542**; PP.47:050; Z.XV:65





**Personnage endormi et figure ailée accroupie V.** Paris. 8-May/1947. India ink on paper. 50 x 65 cm. Private collection.

**OPP.47:543**; PP.47:051; Z.XV:66

**Personnage endormi et femme accroupie VII.** Paris. 8-May/1947. Pen & wash on paper. 50 x 65 cm. Private collection.

**OPP.47:544**; PP.47:053; Z.XV:68





**Personnage endormi et femme accroupie VIII.** Paris. 8-May/1947. Ink wash & pen on paper. [50 x 65] 50,8 x 65,8 cm. Phillips. #182, NY010820, 12/08/20.

**OPP.47:545**; PP.47:054; Z.XV:69; DK.61\*:99

---

**Petit nu assis au miroir.** Paris. 11-May/1947. Lithograph. 31 x 49 cm. Sotheby's. #128, L03160, 03/25/03.

**OPP.47:039**; B.I:451; M:100; NY.47c\*:29





**Jeunes femmes nues se reposant.** Paris. 11-May/1947. Lithograph on Arches. 47,5 x 60,8 cm. Christie's. #87, 1322, 04/28/03.

**OPP.47:049**; B.I:453; M:102; CH.97:65p;  
GM.81\*:139

---

**Femme assise et dormeuse.** Paris. 11-May/1947. Lithograph on Arches. 49,8 x 61,6 cm. Christie's. #89, 1322, 04/28/03. Also Mr. & Mrs. Mitchell Miller Collection.

**OPP.47:052**; B.I:455; M:104;  
CH.68a\*:161; HG.71:182p; MS.24\*:53;  
WC.62\*:25





**Nu assis, de profil.** Paris. 11-May/1947.  
Lithograph on Arches. 48,3 x 60,3 cm. Christie's.  
#88, 1322, 04/28/03.

**OPP.47:059**; B.I:454; M:103; GM.81\*:140

**Femmes sur la plage.** Paris. 11-May/1947. Lithograph on Arches, edition 50. [50 x 65] 48,3 x 56,5 cm. Christie's.  
#86, 1322, 04/28/03.

**OPP.47:074**; B.I:452; M:101; BS.55:203







**Personnage endormi et femme assise les jambes croisées.** Paris. 12-May/1947. India ink on paper. 50 x 65 cm. Catherine Hutin-Blay Collection, Paris. Formerly Jacqueline Roque Picasso Collection.

**OPP.47:517**; PP.47:055; Z.XV:70

---

**Femme assise aux jambes croisées II.** Paris. 12-May/1947. India ink on paper. 50 x 65 cm. Private collection.

**OPP.47:546**; PP.47:056; Z.XV:71





**Joueur de flûte et deux femmes assises par terre III.** Paris. 12-May/1947. Pen & wash on paper. 50 x 65 cm. Galerie Rosengart, Luzern.

**OPP.47:547**; PP.47:057; Z.XV:72

**Jeune femme au corsage à triangles.** Paris. 18-May/1947. Lithograph on Arches, edition 50. 53,9 x 43,1 cm. Christie's. #90, 1322, 04/28/03.

**OPP.47:060**; B.I:456; M:105.a





**Jeune femme au corsage à triangles.** Paris. 18-May/1947.  
Lithograph, India ink & mask with pins. 65 x 51 cm. Private collection.

**OPP.47:323**; M:105.b; JR.12\*:209p

**Le vase de fleurs.** Paris. 26-May/1947~11-July/1948. Oil on canvas [OIC]. 38,1 x 30,5 cm. Private collection.

**OPP.47:406**; PP.48:013; Z.XV:98; CH.68a\*:44





**Les cerises.** Paris. 31-May/1947. Oil on canvas. [24] 24,1 x 33 cm. Private collection. Formerly Sotheby's. #500, NY7649, 05/09/01; Christie's. #690, 9164, 05/14/99; Sotheby's #203, 05/21/94.

**OPP.47:071**; PP.47:059; Z.XV:59; NY.48c\*:n/a

---

**Les pommes.** Paris. 31-May/1947. Oil on canvas. 24 x 35 cm. Philbrook Museum of Art, Tulsa.

**OPP.47:411**; PP.47:060; Z.XV:60





**Tête (Pour Louis Aragon et pour Elga)**. Paris. 6-June/1947. Colored crayon on paper. 32,7 x 24,8 cm. Private collection. Formerly Sotheby's. #476, 7050, 11/13/97.

**OPP.47:413**; PP.47:060a

**Le faune musicien**. Paris. 7~11-June/1947. Brush, black ink & gouache on cream wove paper. 32,7 x 50,2 cm. The Art Institute of Chicago. (Inv 1998.720). Gift of Dorothy Braude Edinburg to the Harry B. & Bessie K. Braude Memorial Collection.

**OPP.47:233**; AR.57\*:69; BO.73\*:n/a; CH.99a\*:43; JM.93:106p; RS.88:143; SD.13a\*:189; WE.76\*:n/a





**Luis de Góngora y Argote, Vingt Poèmes L013 (Soneto Burlesco).** [Golfe-Juan]. 18-June/1947. Aquatint, burin & drypoint, edition 275. [38,3 x 28,1] 28,2 x 22,5 cm. Sotheby's. #92, L03405, 12/09/03.

**OPP.47:159;** B.I:488; Ba:750; GC:51.13; GM.81\*:161; LA.66:237.14; WC.62\*:29

**Luis de Góngora y Argote, Vingt Poèmes L005 (Soneto XVIII).** [Golfe-Juan]. 18-June/1947. Aquatint, burin & drypoint, edition 275. 37,5 x 27,5 cm. The Museum of Modern Art, NYC. (Inv 988.1964.5). The Louis E. Stern Collection.

**OPP.47:168;** B.I:480; Ba:742; GC:51.05; BA.23\*:152p; GM.81\*:153; WC.62\*:29





**Luis de Góngora y Argote, Vingt Poèmes L033 (Soneto Heróico: Al Conde ...).** [Golfe-Juan]. 18-June/1947. Drypoint & burin, edition 275. 37,5 x 27,5 cm. The Museum of Modern Art, NYC. (Inv 988.1964.33). The Louis E. Stern Collection.

**OPP.47:180;** B.I:508; Ba:770; GC:51.33; GM.81\*:181; WC.62\*:29

**Luis de Góngora y Argote, Vingt Poèmes L023 (Soneto X: Al sol ...).** [Golfe-Juan]. 18-June/1947. Aquatint, drypoint & burin, edition 275. 37,5 x 27,5 cm. The Museum of Modern Art, NYC. (Inv 988.1964.23). The Louis E. Stern Collection.

**OPP.47:185;** B.I:498; Ba:760; GC:51.23; GM.81\*:171; WC.62\*:29



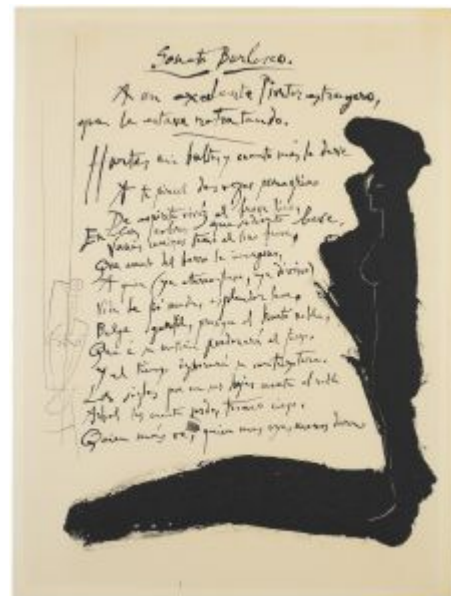


**Femme assise aux seins nus.** [Golfe-Juan]. 18-June/1947.  
Oil on plywood [OiC]. S/U. Private collection.

**OPP.47:549**; PP.47:061; Z.XV:75

**Luis de Góngora y Argote, Vingt Poèmes L003 (Soneto Burlesco).** [Golfe-Juan]. 19-June/1947.  
Aquatint & burin, edition 275. [37,5 x 27,5] 38,1 x 27,9 cm. The Museum of Modern Art, NYC. (Inv 988.1964.3).  
The Louis E. Stern Collection. Also Yale University Art Gallery. The Lawrence and Regina Dubin Family Collection. Promised gift of Dr. Lawrence Dubin, B.S. 1955, M.D. 1958.

**OPP.47:167**; B.I:478; Ba:740; GC:51.03; GM.81\*:151; SF.09\*:21a; WC.62\*:29







**Le miroir.** Golfe-Juan. [26] 23-June/1947. Oil on canvas. [61 x 50,2] 61 x 49,7 cm. Christie's. #40, 16930, 02/27/19. Formerly Helly Nahmad Collection, Monaco/London; Christie's. #453, 9638, 05/10/01; The Museum of Modern Art, NYC.

**OPP.47:012**; PP.47:062; Z.XV:74; AB.57\*:n/a; BU.61\*:20; HN.13\*:115p; JA.09\*:166p; JB.92:324p; NY.48c\*:n/a; NY.62b\*:n/a; NY.67e\*:n/a; PH.58\*:222; WA.52c\*:281; WR.72\*:172p

**Tête de jeune femme.** [Golfe-Juan]. 24-June/1947. Lithograph on wove paper, edition 50. 61 x 47 cm. Graphische Sammlung der ETH Zürich. Also Christie's. #175, 6683, 10/09/02.

**OPP.47:030**; B.I:458; M:106; MD.02\*:254p





**Vase de fleurs au tapis à ramages.** [Golfe-Juan]. 24-June/1947. Lithograph on Arches, edition 50. [45,6 x 57,7; 49,7 x 65,2] 46 x 55,7 cm. Christie's. #92, 1322, 04/28/03.

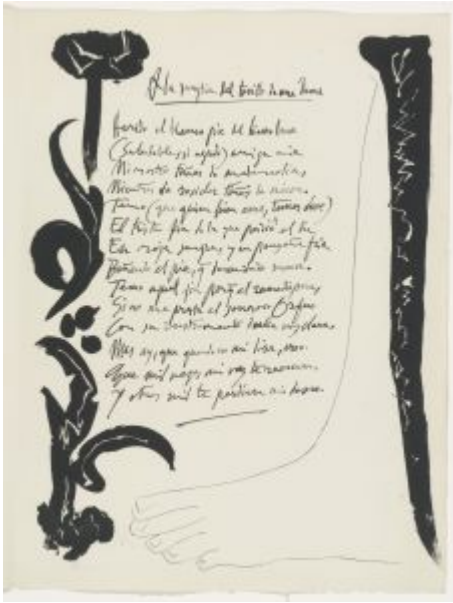
**OPP.47:068**; B.I:459; M:107

---

**Portrait de Françoise aux cheveux flous.** [Golfe-Juan]. 24-June/1947. Aquatint, edition 72. 61,2 x 45,1 cm. Staatsgalerie Stuttgart. (Inv A 66/4314). Graphische Sammlung.

**OPP.47:129**; B.I:457; Ba:791.Bb1; ED.07\*:51; GM.81\*:141





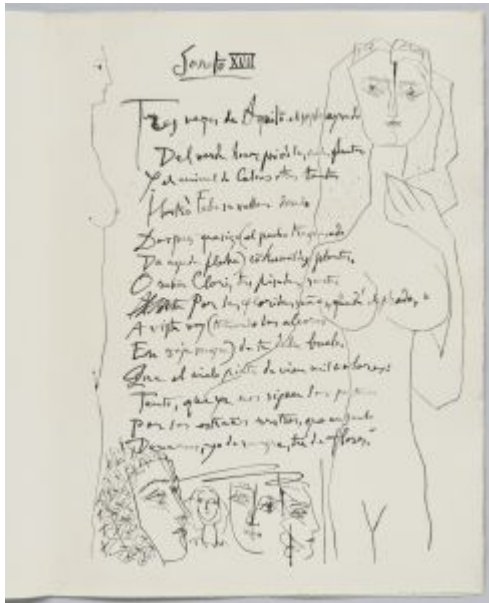
**Luis de Góngora y Argote, Vingt Poèmes L011 (A la sangría del tobillo).** [Golfe-Juan]. 24-June/1947. Aquatint & burin, edition 275. 37,5 x 27,5 cm. The Museum of Modern Art, NYC. (Inv 988.1964.11). The Louis E. Stern Collection.

**OPP.47:174**; B.I:486; Ba:748; GC:51.11; AM.08:17p; GM.81\*:159; JL.71:261p; WC.62\*:29

**Portrait de Françoise aux cheveux flous.** Paris. 24-June/1947. Aquatint & drypoint. 61,5 x 45,2 cm. Musée Picasso, Paris. Dation 1979.

**OPP.47:580**; Ba:791; MPP:2979





**Luis de Góngora y Argote, Vingt Poèmes L007 (Soneto XVII).** [Golfe-Juan]. 25-June/1947. Drypoint, edition 275. 37,5 x 27,5 cm. The Museum of Modern Art, NYC. (Inv 988.1964.7). The Louis E. Stern Collection.

**OPP.47:170**; B.I:482; Ba:744; GC:51.07; GM.81\*:155; LB.58:109p; MM.02:9p; WC.62\*:29

**Luis de Góngora y Argote, Vingt Poèmes L009 (A una dama, que quitando).** [Golfe-Juan]. 25-June/1947. Aquatint, drypoint & burin, edition 275. 37,5 x 27,5 cm. The Museum of Modern Art, NYC. (Inv 988.1964.9). The Louis E. Stern Collection.

**OPP.47:172**; B.I:484; Ba:746; GC:51.09; GM.81\*:157; PP.19:99p; WC.62\*:29



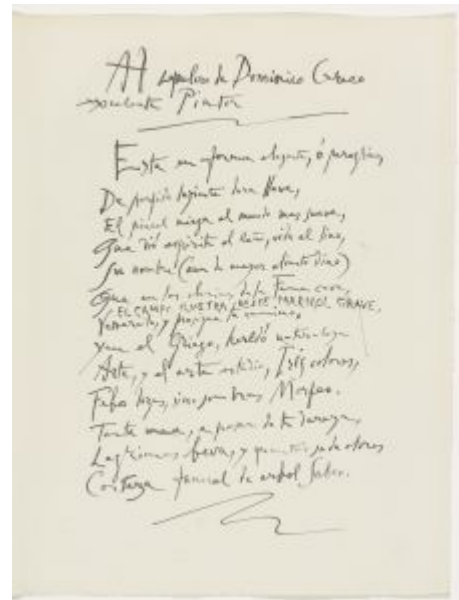


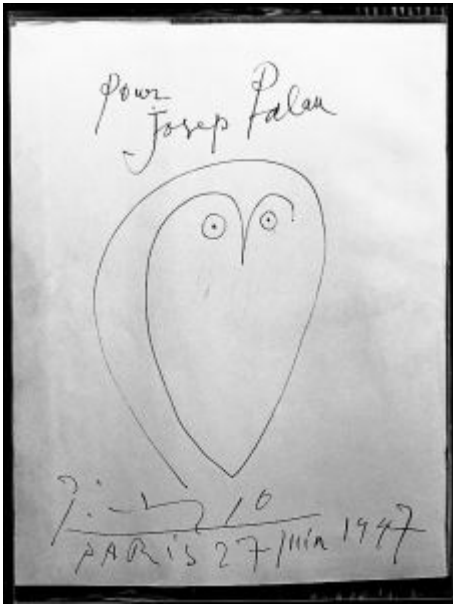
**Luis de Góngora y Argote, Vingt Poèmes L035 (Soneto Heróico: A la ciudad de Córdoba).** [Golfe-Juan]. 25-June/1947. Drypoint & aquatint, edition 275. 37,5 x 27,5 cm. The Museum of Modern Art, NYC. (Inv 988.1964.35). The Louis E. Stern Collection.

**OPP.47:179**; B.I:510; Ba:772; GC:51.35; GM.81\*:183; WC.62\*:29

**Luis de Góngora y Argote, Vingt Poèmes L015 (Al sepulcro de Dominico Greco).** [Paris]. 26-June/1947. Burin, edition 275. [37,5 x 27,5] 38,1 x 27,9 cm. The Museum of Modern Art, NYC. (Inv 988.1964.15). The Louis E. Stern Collection. Also Yale University Art Gallery. The Lawrence and Regina Dubin Family Collection. Promised gift of Dr. Lawrence Dubin, B.S. 1955, M.D. 1958.

**OPP.47:175**; B.I:490; Ba:752; GC:51.15; BS.55:343p; GM.81\*:162; SF.09\*:21b; WC.62\*:29





**Hibou (Pour Josep Palau)**. Paris. 27-June/1947. Pen & ink on paper. 27 x 21 cm. Fundació Palau, Caldes d'Estrac. (Inv 0000286).

**OPP.47:269**

**Hibou**. Paris. 27-June/1947. Ink on paper. S/U. Private collection.

**OPP.47:403**; GH.99:365p





**La chouette.** Paris. 27-June/1947. Pen & ink on paper. 19,5 x 12,5 cm. Christie's. #219, 19832, 04/07-19/21.

**OPP.47:575**

---

**Luis de Góngora y Argote, Vingt Poèmes L034 (Femme au diadème).** [Golfe-Juan]. 29-June/1947. Aquatint & drypoint, edition 275. [38 x 28] 37,5 x 27,5 cm. The Museum of Modern Art, NYC. (Inv 988.1964.34). The Louis E. Stern Collection.

**OPP.47:001;** B.I:509; Ba:771; GC:51.34; GM.81\*:182; LA.66:237.15; WC.62\*:29





**Luis de Góngora y Argote, Vingt Poèmes L020 (Femme au corsage a pois).** [Golfe-Juan]. 29-June/1947. Aquatint & etching, edition 276. 38,1 x 27,9 cm. Leslie Sacks Fine Art. 2005.

**OPP.47:091**; B.I:495; Ba:757; GC:51.20; BA.23\*:152p;  
GM.81\*:168; WC.62\*:29

---

**Luis de Góngora y Argote, Vingt Poèmes L008 (Femme dessinant).** [Golfe-Juan]. 29-June/1947. Drypoint, edition 275. 37,5 x 27,5 cm. The Museum of Modern Art, NYC. (Inv 988.1964.8). The Louis E. Stern Collection.

**OPP.47:171**; B.I:483; Ba:745; GC:51.08; GM.81\*:156;  
WC.62\*:29







**Luis de Góngora y Argote, Vingt Poèmes L039 (Soneto Heróico: Al año ...)**. [Golfe-Juan]. 29-June/1947. Aquatint & drypoint, edition 275. 37,5 x 27,5 cm. The Museum of Modern Art, NYC. (Inv 988.1964.39). The Louis E. Stern Collection.

**OPP.47:173**; B.I:514; Ba:776; GC:51.39; GM.81\*:187; WC.62\*:29

**Luis de Góngora y Argote, Vingt Poèmes L032 (Femme au miroir)**. [Golfe-Juan]. 29-June/1947. Drypoint & aquatint, edition 275. 37,5 x 27,5 cm. The Museum of Modern Art, NYC. (Inv 988.1964.32). The Louis E. Stern Collection.

**OPP.47:181**; B.I:507; Ba:769; GC:51.32; GM.81\*:180; WC.62\*:29





**Luis de Góngora y Argote, Vingt Poèmes L028 (Femme à la fraise, de profil).** [Golfe-Juan]. 29-June/1947. Aquatint and etching, edition 275. 37,5 x 27,5 cm. The Museum of Modern Art, NYC. (Inv 988.1964.28). The Louis E. Stern Collection. Also Beinecke Rare Book and Manuscript Library. Yale University. Gift of John Hay Whitney.

**OPP.47:183**; B.I:503; Ba:765; GC:51.26; BS.55:84p; CC.01\*:66p; GM.81\*:176; LB.58:108p; SF.09:174p; WC.62\*:29

---

**Luis de Góngora y Argote, Vingt Poèmes L024 (Femme lisant).** [Golfe-Juan]. 29-June/1947. Drypoint, edition 275. 37,5 x 27,5 cm. The Museum of Modern Art, NYC. (Inv 988.1964.24). The Louis E. Stern Collection. Also Caroline Wiseman Modern and Contemporary. 2008.

**OPP.47:184**; B.I:499; Ba:761; GC:51.24; GM.81\*:172; WC.62\*:29





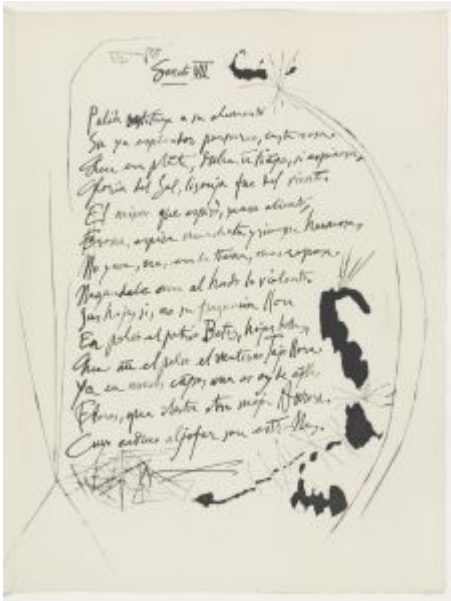
**Luis de Góngora y Argote, Vingt Poèmes L019 (A una dama, que aviéndola).** [Golfe-Juan]. 1-July/1947. Aquatint & drypoint, edition 275. 37,5 x 27,5 cm. The Museum of Modern Art, NYC. (Inv 988.1964.19). The Louis E. Stern Collection.

**OPP.47:178;** B.I:494; Ba:756; GC:51.19; GM.81\*:167; WC.62\*:29

**Luis de Góngora y Argote, Vingt Poèmes L017 (A la capilla de Nuestra Señora del Sagrario).** [Golfe-Juan]. 2-July/1947. Aquatint & drypoint, edition 275. 37,5 x 27,5 cm. The Museum of Modern Art, NYC. (Inv 988.1964.17). The Louis E. Stern Collection.

**OPP.47:176;** B.I:492; Ba:754; GC:51.17; GM.81\*:165; WC.62\*:29



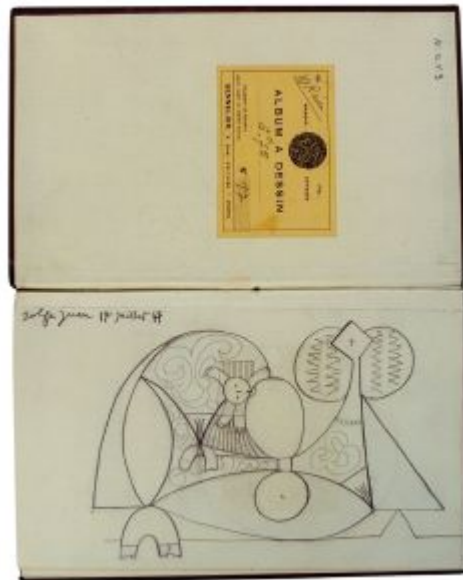


**Luis de Góngora y Argote, Vingt Poèmes L029 (Soneto VII).** [Golfe-Juan]. 2-July/1947. Drypoint & aquatint, edition 275. 37,5 x 27,5 cm. The Museum of Modern Art, NYC. (Inv 988.1964.29). The Louis E. Stern Collection.

**OPP.47:182;** B.I:504; Ba:766; GC:51.29; GM.81\*:177; WC.62\*:29

**Carnet de dessins L001.** Golfe-Juan. 14-July/1947. Pencil on paper. 24,5 x 15,5 cm. Private collection. Formerly Heinz Berggruen Collection.

**OPP.47:414;** BL.06\*:160



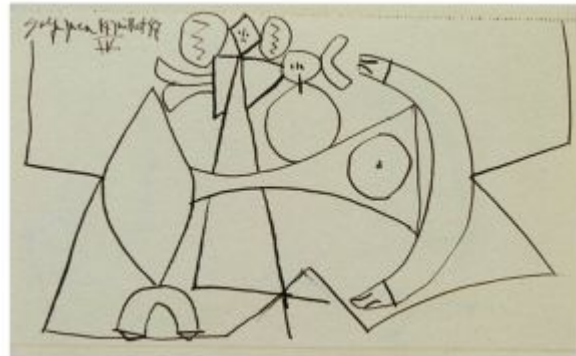


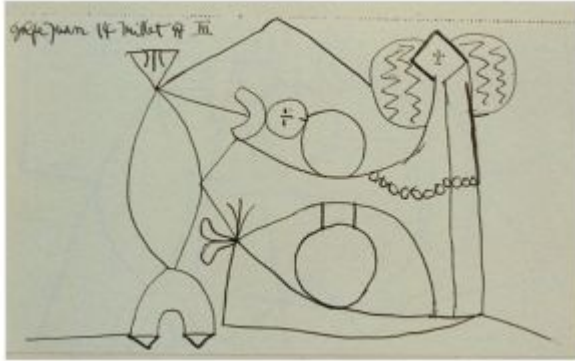
**Carnet de dessins L002 (II)**. Golfe-Juan. 14-July/1947. Pencil on paper. 24,5 x 15,5 cm. Private collection. Formerly Heinz Berggruen Collection.

**OPP.47:415**; BL.06\*:161

**Carnet de dessins L004 (IV)**. Golfe-Juan. 14-July/1947. Pencil on paper. 24,5 x 15,5 cm. Private collection. Formerly Heinz Berggruen Collection.

**OPP.47:416**; BL.06\*:161



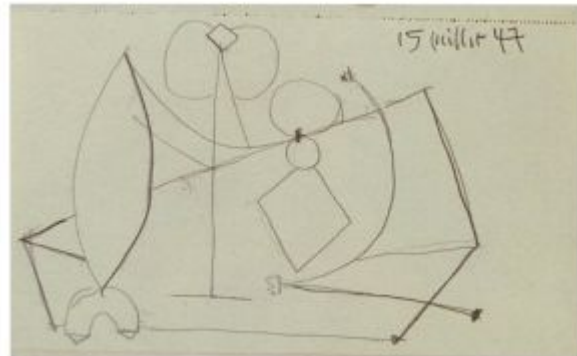


**Carnet de dessins L003 (III)**, Golfe-Juan. 14-July/1947. Pencil on paper. 24,5 x 15,5 cm. Private collection. Formerly Heinz Berggruen Collection.

**OPP.47:417**; BL.06\*:161p

**Carnet de dessins L005**, Golfe-Juan. 15-July/1947. Pencil on paper. 24,5 x 15,5 cm. Private collection. Formerly Heinz Berggruen Collection.

**OPP.47:418**; BL.06\*:161p





**Portrait de Florence Loeb.** [Paris~Golfe-Juan]. 22-July/1947. Pencil on paper. 23,7 x 14,2 cm. Sotheby's. #140, L06009, 06/20/06.

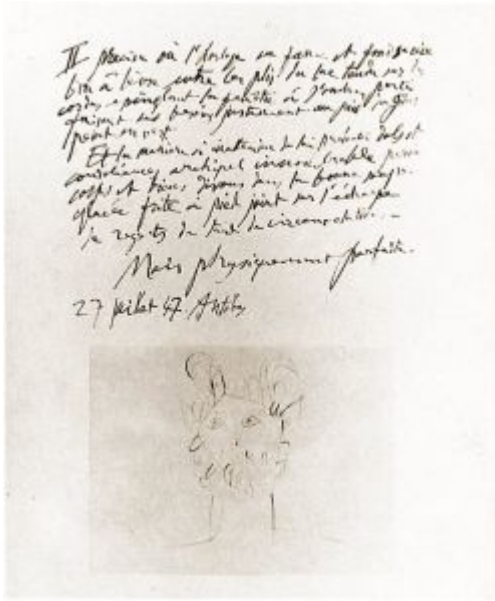
**OPP.47:051**; PA.79c\*:165

---

**Portrait de Florence Loeb III.** [Paris~Golfe-Juan]. 22-July/1947. Pencil on paper. 23 x 13,5 cm. Museum Ludwig, Köln. (Inv ML/Z 1994/045). Schenkung 1994.

**OPP.47:133**; MD.02\*:293p; WO.92\*:58





**l'aurore boréale ...** Cap d'Antibes. 27-July/1947. Ink. S/U.  
Musée Picasso, Paris.

**OPP.47:191**; CW.89:428p

**Faune à la lance.** Antibes. [End-Summer]/1947.  
Black chalk on paper. 164,5 x 131 cm. Christie's. #10,  
21549, 06/14/22.

**OPP.47:596**







**Études de céramique.** Vallauris. 4-August/1947. Crayon on paper. 33 x 25 cm. Fundación Almine & Bernard Ruiz-Picasso para el Arte.

**OPP.47:496**; BA.23\*:232p; CE.04\*:52

**Composition du 8 Août 1947.** [Golfe-Juan]. 8-August/1947. Lithograph in black & ochre on Arches. 32,5 x 50 cm. Christie's. #93, 1322, 04/28/03.

**OPP.47:061**; B.I:460; M:108



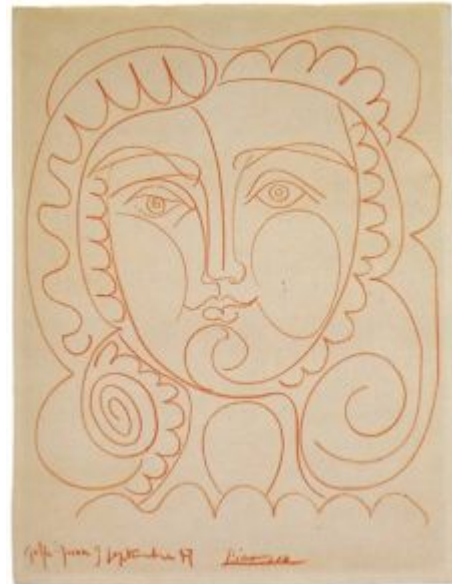


**Ulysse et les sirènes.** Cap d'Antibes. [1946] [Late-July] September/1947. Ripolin & graphite on fibrocement. [450 x 300] 360 x 250 cm. Musée Picasso, Antibes.

**OPP.47:086**; MPA:1947.1.1; CK.04:154p; DG.81:26; DG.87:48p; EM.55:215p; GU.00:70; JA.09\*:167p; JL.71:122p; JM.07:18p; JV.06\*:153p; PA.21g:222p; RP.81:22.1

**Tête de femme (Françoise Gilot).** Golfe-Juan. 9-September/1947. Sanguine on wove paper. 65,9 x 50,5 cm. The Solomon R. Guggenheim Museum, NYC. Thannhauser Collection.

**OPP.47:397**; PP.47:063; Z.XV:73; TC.92:16p





**Tête de femme.** Golfe-Juan. 11-September/1947. Red pencil on paper. 26,7 x 20,3 cm. Private collection.

**OPP.47:313**; JR.12\*:66p

---

**Portrait de Françoise.** Golfe-Juan. 12-September/1947. Pen & ink on paper [Obverse of *Projet de sculpture: oiseau et femme*]. 25,4 x 16,7 cm. Sotheby's. #147, N09036, 11/07/13. Formerly Paloma Ruiz-Picasso Collection.

**OPP.47:400**; NY.81a\*:n/a





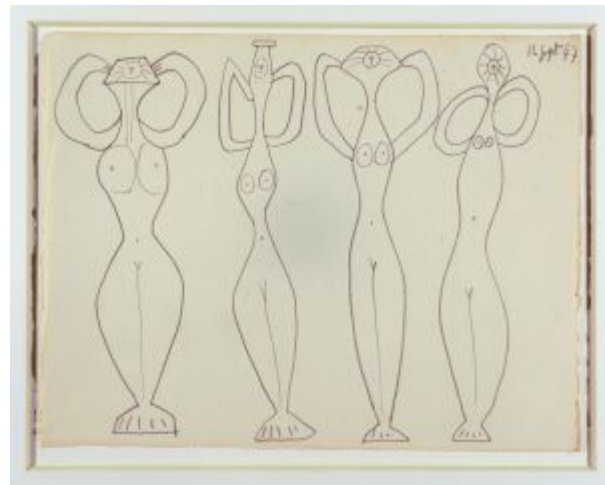
**Projet de sculpture: oiseau et femme.** Golfe-Juan. 12-September/1947. Pen & ink on paper [Reverse of *Portrait de Françoise*]. 25,4 x 16,7 cm. Sotheby's. #147, N09036, 11/07/13. Formerly Paloma Ruiz-Picasso Collection.

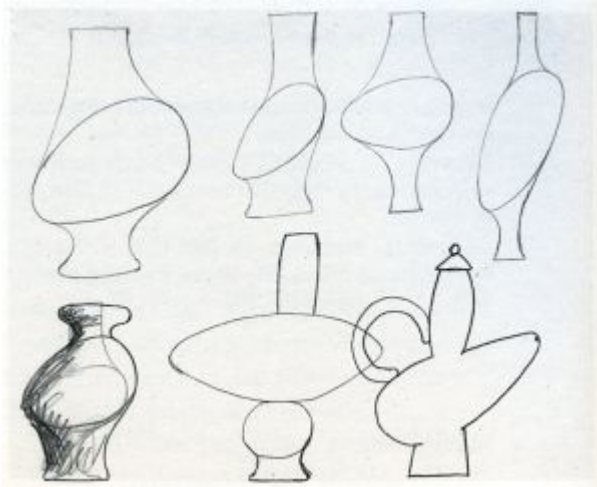
**OPP.47:401**; NY.81a\*:n/a

---

**Étude pour une sculpture.** Paris. 16-September/1947. Pencil on paper [Obverse of *Étude pour une sculpture*]. 25 x 32,5 cm. Museum Ludwig, Köln. (Inv L/Z 1994/046). Schenkung 1994. Formerly Pace Gallery, NY.

**OPP.47:270**; CE.04\*:56; MM.02:45p; WO.92\*:60





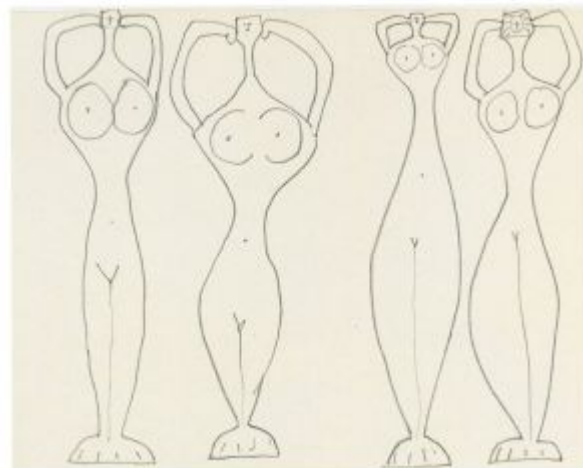
**Étude pour une sculpture.** Golfe-Juan. 16-September/1947. Pencil on paper [Reverse of *Étude pour une sculpture*]. 25 x 32,5 cm. Museum Ludwig, Köln. Formerly Pace Gallery, NY.

**OPP.47:271**; WO.92:115p

---

**Études de céramique.** Golfe-Juan. 16-September/1947. Crayon on paper. 25 x 33 cm. Fundación Almine & Bernard Ruiz-Picasso para el Arte.

**OPP.47:497**; CE.04\*:56





**Portrait de Françoise.** Golfe-Juan. Fall/1947. Charcoal on paper. 66 x 51 cm. Musée Picasso, Paris. Dation 1979.

**OPP.47:132**; MPP:1390; PP.47:068; PD.06\*:n/a

---

**Cruche en forme d'oiseau.** [Paris]. Fall/1947. Red clay, painted in engobes. 50 x 41 x 33 cm. Museo Picasso, Málaga. Gift of Christine Ruiz-Picasso.

**OPP.47:148**; MPM:1.70A; DP.20\*:135; GS.03:1.111





**Avaler.** Vallauris. 23-September/1947. White clay decorated with engobe & partially glazed. 32 x 38 x 39 cm. Museu Picasso, Barcelona. Donation 1982.

**OPP.47:300**; MPB:112.441

---

**Oiseau.** Vallauris. 23-September/1947. White earthenware ceramic plate, partially engraved, with colored engobe and glaze. 38,2 cm. Christie's. #20, 18804, 11/01-15/21.

**OPP.47:378**



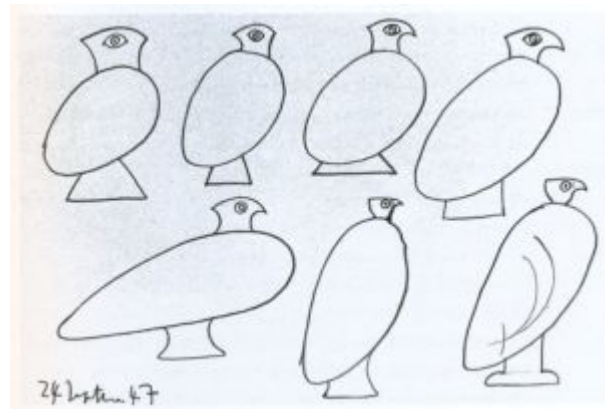


**Oiseau.** Vallauris. 23-September/1947. Painted, glazed & incised ceramic; plat long. 32 x 38 cm. Sotheby's. #188, L15007, 06/25/15.

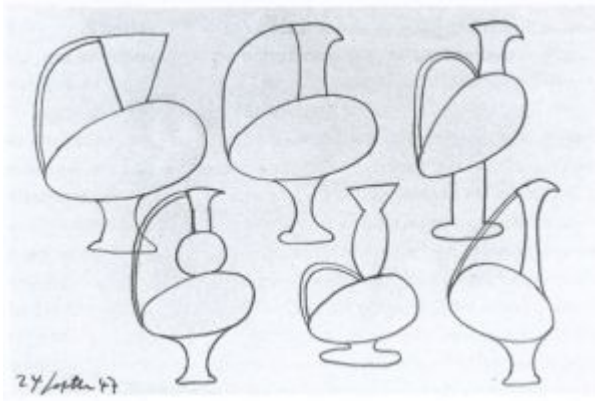
**OPP.47:462**

**Étude de céramique: condor.** Vallauris. 24-September/1947. Lead pencil on paper. 16,4 x 25,1 cm. Private collection.

**OPP.47:334**; JA.09:23p





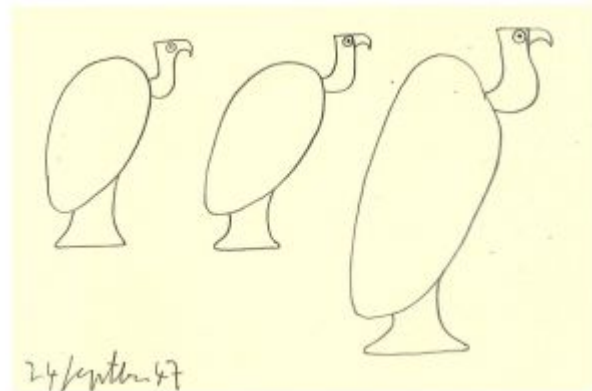


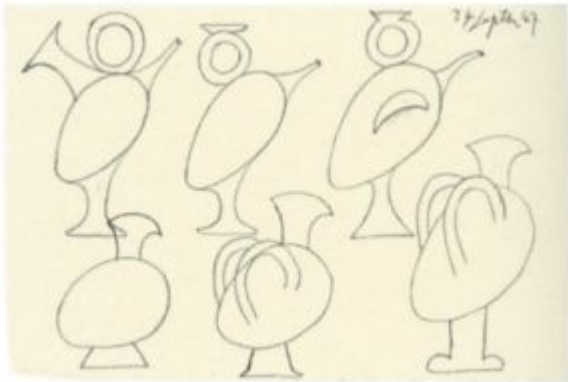
**Étude de céramique: condor.** Vallauris. 24-September/1947. Lead pencil on paper. 16,4 x 25,1 cm. Private collection.

**OPP.47:335**; JA.09:23p

**Étude de céramique: condor.** Vallauris. 24-September/1947. Graphite. 16,4 x 25,1 cm. Private collection.

**OPP.47:492**; PD.09:392p





**Étude de céramique: condor.** Vallauris. 24-September/1947. Pencil on paper. 16,4 x 25,1 cm. Private collection.

**OPP.47:613**; DP.20:376p

**Étude de céramique.** Vallauris. 30-September/1947. Lead pencil on paper. 25 x 33 cm. Private collection.

**OPP.47:336**; JA.09:23p





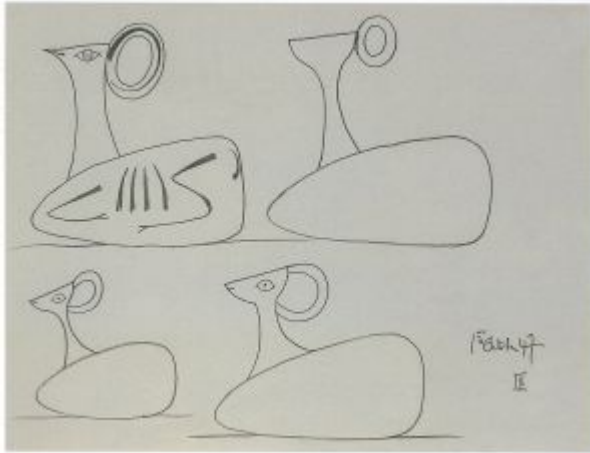
**Étude de céramique: condor.** Vallauris. 30-September/1947. Lead pencil on paper. 25 x 33 cm. Private collection.

**OPP.47:337**; JA.09:23p

**Étude de céramique XIV.** Vallauris. 1-October/1947. Lead pencil on paper. 25 x 33 cm. Private collection.

**OPP.47:341**; JA.09\*:168p





**Étude de céramique IX.** Vallauris. 1-October/1947. Lead pencil on paper. 25 x 33 cm. Private collection.

**OPP.47:342**; JA.09\*:168p

**Bourrache oiseau.** Vallauris. October/1947. Ceramic, hand painted white terracotta. 59,4 x 34 cm. Sotheby's. #245, N10945, 05/18/22. Formerly Hammer Galleries.

**OPP.47:021**; NY.96\*:n/a; RH.96b\*:n/a; VA.90\*:66; WA.15\*:n/a





**Femme à l'amphore.** Vallauris. [October]/1947. White earthenware figure, turned & modeled, decorations in engobes & incisions. 49 x 26,5 x 18 cm. Musée Picasso, Paris. Dation 1979.

**OPP.47:251**; MPP:3680; JA.99:25p; MP.85:442;  
PA.21e\*:397; PD.09:391p; RB.99:56p; RS.88:188p

**Femme à l'amphore.** Vallauris. [October]/1947. White earthenware figure, turned & modeled, decorations in engobes, enamel & incisions. 42,5 x 32,5 x 15,5 cm. Musée Picasso, Paris. Dation 1979.

**OPP.47:252**; MPP:3679; LE.21\*:247; MM.02:74p;  
MP.85:441





**Visage de femme.** Vallauris. 7-October/1947. Painted & glazed ceramic plate. 38 cm. Sotheby's. #153, L11005, 02/09/11.

---

**OPP.47:262**

**Profil de femme.** Vallauris. 7-October/1947. Painted & glazed ceramic. 38 cm. Sotheby's. #158, L11005, 02/09/11.

---

**OPP.47:263**





**Tête de faune.** Vallauris. 7-October/1947. White earthenware clay plate, decoration engraved, added & painted in engobes & oxides, color glazed. 32 x 38 cm. Musée Picasso, Antibes.

**OPP.47:377**; JV.06\*:193p

---

**Visage.** Vallauris. 7-October/1947. White terracotta incised, glazed & painted in engobes. 32 x 38 x 4 cm. Museo Picasso, Málaga. On temporary loan from Fundación Almine & Bernard Ruiz-Picasso para el Arte.

**OPP.47:614**; DP.20\*:130; NC.17\*:106





**Tête de faune.** Vallauris. 9-October/1947. White clay; ornamented with engobe under glaze. 32 x 38 cm. Museum Ludwig, Köln. (Inv L 01595). Schenkung 06/27/94.

**OPP.47:104**; MM.02\*:140p; WO.92\*:130

**Tête de faune.** Vallauris. 9-October/1947. Glazed ceramic dish. 32 x 38 cm. Private collection.

**OPP.47:201**; AU.89\*:45







**Visage masque.** Vallauris. 9-October/1947.  
Painted & glazed ceramic; plat long with crimped  
edges. 37,5 cm. Sotheby's. #321, L20004,  
02/05/20. Formerly Marina Picasso Collection.

**OPP.47:398**

**Tête de faune.** Vallauris. 9-October/1947.  
Painted, glazed & incised ceramic; plat long  
with crimped edges. 38,1 cm. Sotheby's.  
#96, N09727, 05/18/17. Formerly Marina  
Picasso Collection..

**OPP.47:502**; HB.85\*:n/a





**Tête de faune.** Vallauris. 9-October/1947. Painted & glazed ceramic; plat long with crimped edges. 38,1 cm. Sotheby's. #22, N09727, 05/18/17. Formerly Marina Picasso Collection.

**OPP.47:504**

---

**Visage masque putoise.** Vallauris. 11-October/1947. Hand painted white terracotta plate. 37,9 x 32,1 cm. Hammer Galleries. 2006.

**OPP.47:080**





**Visage.** Vallauris. 11-October/1947. {ainted & glazed ceramic plate. 38 cm. Sotheby's. #156, L11005, 02/09/11.

---

**OPP.47:264**

---

**Tête de faune.** Vallauris. 11-October/1947. White earthenware clay plate, decoration painted in engobes & oxides, glazed. 32 x 38 cm. Musée Picasso, Antibes.

---

**OPP.47:371**; JV.06\*:186p





**Visage.** Vallauris. 11-October/1947. Painted & glazed ceramic; plat long. 32 x 38 cm. Sotheby's. #150, L15007, 06/25/15.

**OPP.47:451**; HB.85\*:n/a

---

**Tauromachie.** Vallauris. 11-October/1947. Painted & glazed ceramic; plat long. 31 x 37 cm. Sotheby's. #162, L15007, 06/25/15.

**OPP.47:456**; HB.85\*:n/a; KU.99\*:97; TF.00\*:3





**Faune barbu.** Vallauris. 11-October/1947.  
Painted, glazed, incised & punctured ceramic; plat  
long. 32 x 37,5 cm. Sotheby's. #204, L15007,  
06/25/15.

**OPP.47:467**; HB.85\*:n/a

---

**Tête de faune.** Vallauris. 11-  
October/1947. Painted & glazed ceramic  
plat long. 38 cm. Sotheby's. #507, L16005,  
02/05/16.

**OPP.47:487**; HB.91\*:n/a





**Visage.** Vallauris. 11-October/1947. Plat long.  
32,2 x 37,8 cm. Sotheby's. #2, L16781, 11/22/16.

**OPP.47:491**; LR.07\*:1

---

**Visage.** Vallauris. 11-October/1947. White  
earthenware clay plate, painted in engobes,  
glazed. 32 x 38 cm. Private collection.

**OPP.47:512**; CG.04\*:98; MG.04b\*:88





**Portrait d'une femme.** Vallauris. 13-October/1947. Faïence, relief decoration with engobe painting beneath glaze. 32 x 38 cm. Museum Ludwig, Köln. (Inv ML 01589). Schenkung 2001.

**OPP.47:274**; WO.92\*:132

---

**Visage masque en losange.** Vallauris. 13-October/1947. Clay, painted & partly glazed (incised traces). 38 x 32 x 3,5 cm. Sotheby's. #312, N10148, 11/13/19. Formerly Marina Picasso Collection.

**OPP.47:407**; KB.99\*:50





**Femme assise.** Vallauris. 14-October/1947. Terracotta, glazed. 32 x 38 cm. Museum Ludwig, Köln. (Inv ML 01566). Schenkung 1994.

**OPP.47:273**; WO.92\*:131

---

**Tête de faune.** Vallauris. 15-October/1947. Painted & glazed ceramic; plat long with crimped edges. 38,1 cm. Sotheby's. #88, N09727, 05/18/17. Formerly Marina Picasso Collection.

**OPP.47:501**; KU.99\*:2







**Homme barbu.** Vallauris. 16-October/1947. White clay, incised, decorated with engobe & partially glazed. 31,6 x 38 x 4 cm. Museu Picasso, Barcelona. Donation 1982.

**OPP.47:296**; MPB:112.460; AN.06b\*:n/a

---

**Faune.** Vallauris. 16-October/1947. White clay, incised, decorated with engobe & partially glazed. 31,8 x 38 x 4 cm. Museu Picasso, Barcelona. Donation 1982.

**OPP.47:297**; MPB:112.462; AN.06b\*:n/a; TO.04\*:n/a; TO.95b:74p





**Tête de faune IX.** Vallauris. 16-October/1947. White terracotta, stamped & painted with slips under glaze. 32 x 38 cm. Private collection.

**OPP.47:329**; JR.10\*:136p

---

**Visage de faune VI.** Vallauris. 16-October/1947. Painted & glazed ceramic; plat long. 31,5 x 38 cm. Sotheby's. #206, L15007, 06/25/15.

**OPP.47:469**; KU.99\*:4; TF.00\*:1





**Visage.** Vallauris. 17-October/1947. Painted & glazed ceramic; plat long. 32 x 38 cm. Sotheby's. #205, L15007, 06/25/15.

**OPP.47:468**; KU.99\*:5

**Tête de faune.** Vallauris. 17-October/1947. White earthenware clay plate, painted in engobes, glazed. 32 x 38 cm. Private collection.

**OPP.47:513**; CG.04\*:97; FE.00\*:6; MG.04b\*:89; RJ.99a\*:40p





**Masque de faune V.** Vallauris. 18-October/1947. Painted & glazed ceramic; plat long with crimped edges. 38,1 cm. Sotheby's. #339, N10148, 11/13/19.

**OPP.47:146**

**Tête de faune VII.** Vallauris. 18-October/1947. White earthenware plate, decoration in engobes, white enamel & incisions. 32 x 38,2 x 3,5 cm. Musée National Adrien Dubouché, Limoges. On loan from Musée Picasso, Paris. Jacqueline Roque Picasso Collection. Dation 1990.

**OPP.47:256**; MPP:1990.362; CE.04\*:108; GR.90\*:143





**Visage de faune.** Vallauris. 18-October/1947. Partially engraved white earthenware plate painted with colored engobe & glaze. 38,3 cm. Christie's. #439, 13488, 03/01/17.

**OPP.47:259**

**Faune nègre VI.** Vallauris. 18-October/1947. White clay, incised, decorated with engobe & partially glazed. 32 x 38 x 3,7 cm. Museu Picasso, Barcelona. Donation Jacqueline Roque Picasso, 1982.

**OPP.47:298**; MPB:112.466; AN.06b\*:n/a; TO.04\*:212





**Masque de faune III.** Vallauris. 18-October/1947. Painted & glazed ceramic; plat long with crimped edges. 38,1 cm. Sotheby's. #313, N10148, 11/13/19. Formerly Marina Picasso Collection.

**OPP.47:559**

**Tête de faune géométrique.** Antibes. 20-October/1947. White clay, ornamented with engobe, oxides & white enamel under glaze. 32 x 38 cm. Musée Picasso, Antibes.

**OPP.47:105**; MPA:1949.4.1; JV.06\*:189p; MM.02\*:141p; UP.00:921





**Tête de faune.** Vallauris. 20-October/1947. White clay, stamped form, decorated with wash, white enamel, with incision, all coated by dipping in paint. 32 x 38,2 x 3,5 cm. Musée Picasso, Paris. Dation 1979.

**OPP.47:195**; MPP:3675; MP.85:436;  
PA.79a\*:n/a; UP.00:922; VA.04\*:n/a

---

**Tête de faune VI.** Vallauris. 20-October/1947. Glazed ceramic. 32 x 38 cm. Christie's. #349, 2479, 11/02/11.

**OPP.47:301**





**Tête de faune II.** Vallauris. 21-October/1947. White earthenware plate, decoration in engobes, white enamel & incisions. 32 x 38,5 x 3,5 cm. Musée National Adrien Dubouché, Limoges. On loan from Musée Picasso, Paris. Jacqueline Roque Picasso Collection. Dation 1990.

**OPP.47:255**; MPP:1990.363; CE.04\*:107; GR.90\*:144; JM.07\*:52

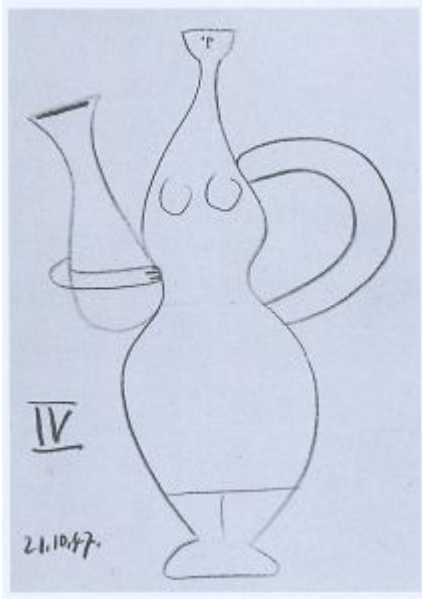
---

**Visage masque IV.** Vallauris. 21-October/1947. Fully glazed ceramic plate. 38 cm. Christie's. #313, 7976, 06/22/11.

**OPP.47:292**; BS.08b\*:2







**Étude de céramique: femme à l'amphore IV.** Vallauris. 21-October/1947. Red crayon on paper [OIC]. 26,8 x 20,9 cm. Private collection.

**OPP.47:333**; JA.09:25p; MM.02:74p

**Tête de faune.** Vallauris. 21-October/1947. Painted, glazed & incised ceramic; plat long. 32 x 38 cm. Sotheby's. #201, L15007, 06/25/15.

**OPP.47:466**





**Étude de céramique: femme à l'amphore II.** Vallauris. 21-October/1947. Red pencil. 26,8 x 20,9 cm. Private collection.

**OPP.47:493**; PD.09:390p

**Plat visage masque.** Vallauris. 21-October/1947. Painted & glazed ceramic; plat long. 37 cm. Sotheby's. #303, N09931, 11/13/18. Formerly Formerly Jacqueline Roque Picasso Collection.

**OPP.47:553**; VA.04\*:n/a; VA.86\*:n/a; VA.90\*:n/a





**Visage.** Vallauris. 21-October/1947. White terracotta incised, glazed & painted in engobes. 32 x 38 x 4 cm. Museo Picasso, Málaga. On temporary loan from Fundación Almine & Bernard Ruiz-Picasso para el Arte.

**OPP.47:615**; DP.20\*:131

**Tête de faune.** Vallauris. 22-October/1947. White earthenware clay plate, decoration engraved & painted in engobes & oxides, glazed. 32 x 38 cm. Musée Picasso, Antibes.

**OPP.47:244**; JV.06\*:187p





**Tête de faune.** Antibes. 22-October/1947. Glazed white ceramic platter, painted in colors. 32 x 38 cm. Musée Picasso, Antibes.

**OPP.47:245**

---

**Visage d'homme.** Vallauris. 22-October/1947. White clay, incised, decorated with engobe & partially glazed. 32,3 x 38 x 4 cm. Museu Picasso, Barcelona. Donation 1982.

**OPP.47:267**; MPB:112.461





**Plat long avec visage bleu I.** Vallauris. 22-October/1947. Faïence, engraved decoration with engobe painting beneath glaze. 32 x 38 cm. Museum Ludwig, Köln. (Inv ML 01565). Schenkung 1994.

**OPP.47:272**; WO.92\*:129

**Masque.** Vallauris. 22-October/1947. Painted, glazed & incised ceramic; plat long with crimped edges. 38,2 cm. Sotheby's. # 320, L20004, 02/05/20. Formerly Marina Picasso Collection.

**OPP.47:564**





**Visage.** Vallauris. 23-October/1947. Painted, glazed, incised ceramic with modelled relief elements; plat long. 32 x 38 cm. Sotheby's. #199, L15007, 06/25/15.

---

**OPP.47:465**

---

**Visage en relief.** Vallauris. 23-October/1947. White earthenware ceramic plate, partially engraved, with colored engobe & glaze. 38,3 cm. Christie's. #1274, 12071, 05/13/16.

---

**OPP.47:490**





**Lettre manuscrite à Max Pellequer.** Golfe-Juan. 23-October/1947. Ink on paper. S/U. Piasa. #40, 2142, 02/15/24. Formerly Max Pellequer Collection.

**OPP.47:607**

**Tête de faune.** Vallauris. 24-October/1947. White earthenware clay plate, decoration engraved & painted in engobes & oxides, glazed. 32 x 38 cm. Musée Picasso, Antibes.

**OPP.47:373**; JV.06\*:190p





**Tête de faune.** Vallauris. 24-October/1947. White earthenware clay plate, decoration engraved & painted in engobes & oxides, glazed. 32 x 38 cm. Musée Picasso, Antibes.

**OPP.47:374;** JV.06\*:190p

**Tête de faune.** Vallauris. 24-October/1947. White earthenware clay plate, decoration engraved & painted in engobes & oxides, glazed. 32 x 38 cm. Musée Picasso, Antibes.

**OPP.47:375;** JV.06\*:191p







**Nature morte: verre, couteau et pomme.**

Vallauris. 28-October/1947. White clay, incised pattern & white tin glaze, the whole dipped in glaze. 32 x 38 cm. Museo Picasso, Málaga. Gift of Christine Ruiz-Picasso.

**OPP.47:147**; MPM:1.69A; DP.20\*:132;  
GS.03:1.110; NC.17\*:107

---

**Nature morte: verre, couteau et  
pomme.** Vallauris. 28-October/1947. White  
clay, incised pattern & white tin glaze, the  
whole dipped in glaze. 32 x 38 x 4,3 cm.  
Musée Picasso, Paris. Dation 1979.

**OPP.47:257**; MPP:3676; JB.92:298p;  
MA.08a\*:n/a; MP.85:437; PA.79a\*:n/a;  
SP.04\*:n/a





**Portrait de jeune.** Vallauris. 28-October/1947. Pen & black ink on paper. 26,7 x 21 cm. Private collection. Formerly Christie's. #164, 11/06/91.

**OPP.47:603**; PP.47:065

**Tête de femme.** Golfe-Juna. 28-October/1947. Pen, brush, & ink on book flyleaf. 31,6 x 23,8 cm. Allen Memorial Art Museum, Oberlin College, Oberlin, OH. (Inv 1948.309)..

**OPP.47:610**





**Visage brun/bleu VIII.** Vallauris. 29-October/1947. White clay plate, decoration with engobe, glazed. 31 x 38 cm. Christie's. #314, 7976, 06/22/11. Formerly Fondation Beyeler, Riehen/Basel.

**OPP.47:136**; BS.08b\*:3; WW.91:470p

---

**Pieuvre bleue XI.** Vallauris. 29-October/1947. Rectangular plate in terracotta, painted in black, blue, green & red dots on enameled white ground, engraved lines white. 32 x 38 cm. Sotheby's. #181, L15007, 06/25/15. Formerly Marina Picasso Collection. (Inv 57217).

**OPP.47:283**; CP.95:144p; GS.85\*:100; TK.86\*:CC-1





**Composition aux deux poissons et au brin de persil.** Vallauris. 29-October/1947. White earthenware clay plate, decoration painted in engobes & oxides, glazed. 32 x 38 cm. Musée Picasso, Antibes.

**OPP.47:381**; JV.06\*:196p

**Visage masque VII.** Vallauris. 29-October/1947. Painted & partially glazed ceramic; plat long with crimped edges. 31,8 cm. Sotheby's. #90, N09727, 05/18/17. Formerly Marina Picasso Collection.

**OPP.47:509**; HB.85\*:n/a





**Tête de faune IX.** Vallauris. 30-October/1947. White earthenware plate, decorations in engobes & enamel on brush cover. 31,5 x 38,5 x 4,8 cm. Musée Picasso, Paris. Dation 1979.

**OPP.47:254**; MPP:3677; MP.85:438; PA.79a\*:n/a

---

**Tête de faune.** Vallauris. 30-October/1947. White earthenware clay plate, decoration engraved & painted in engobes & oxides, glazed. 32 x 38 cm. Musée Picasso, Antibes.

**OPP.47:376**; JV.06\*:192p





**Visage.** Vallauris. 30-October/1947. White earthenware clay plate, incised, painted in engobes, glazed. 32 x 38 cm. Private collection.

**OPP.47:514**; CG.04\*:99; MG.04b\*:90

---

**Visage.** Vallauris. 30-October/1947. White terracotta incised, glazed & painted in engobes. 32,5 x 38 x 4 cm. Museo Picasso, Málaga. On temporary loan from Fundación Almine & Bernard Ruiz-Picasso para el Arte.

**OPP.47:616**; DP.20\*:133





**Visage dans étoile.** Vallauris. 31-October/1947.  
Glazed ceramic, edition 28. 31,4 x 38,7 cm.  
Sotheby's. #220, N08090, 05/04/05.

**OPP.47:089**; AR:30

---

**Tête de faune IV.** Vallauris. 31-  
October/1947. Hand-painted white  
terracotta ceramic. 32 x 37,8 cm. Elliott  
Yeary Gallery. 2005.

**OPP.47:094**





**Tête de faune.** Vallauris. 31-October/1947.  
Painted, glazed & incised ceramic; plat long. 32 x  
38 cm. Sotheby's. #198, L15007, 06/25/15.

**OPP.47:464**

---

**Tête de faune.** Vallauris. 31-  
October/1947. White terracotta incised,  
glazed & painted in engobes. 32 x 37,5 x  
4,5 cm. Museo Picasso, Málaga. On  
temporary loan from Fundación Almine &  
Bernard Ruiz-Picasso para el Arte.

**OPP.47:617**; DP.20\*:134







**Trois têtes.** Paris. 1-November/1947. Ink, wash & white gouache on paper. [33 x 50,5] 32,5 x 50,4 cm. The Israel Museum, Jerusalem. (Inv B99.1951). Arthur and Madeleine Chalette Lejwa Collection.

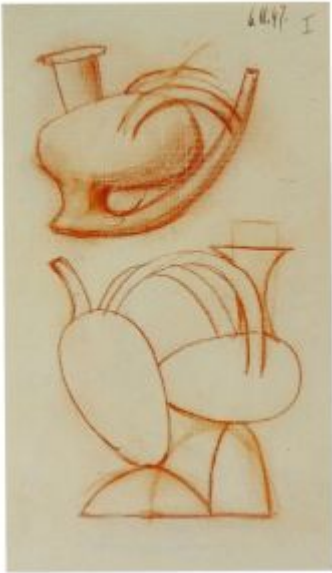
**OPP.47:193**; JR.16\*:n/a; UP.00:937

---

**Carnet de dessins L013 (VIII).** Golfe-Juan. 1-November/1947. Ink and wash on paper. 24,5 x 15,5 cm. Private collection. Formerly Heinz Berggruen Collection.

**OPP.47:426**; BL.06\*:163p



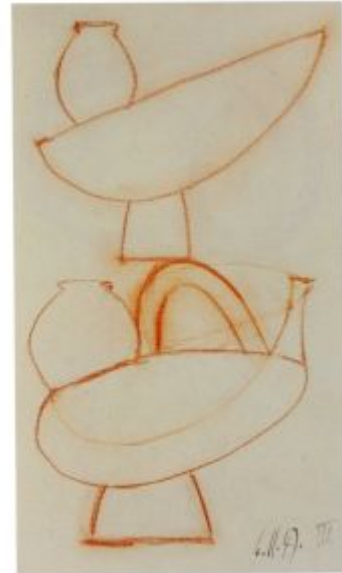


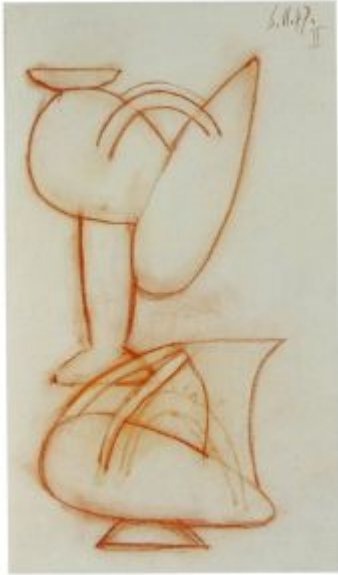
**Carnet de dessins L006 (I).** Golfe-Juan. 6-November/1947. Pencil on paper. 24,5 x 15,5 cm. Private collection. Formerly Heinz Berggruen Collection.

**OPP.47:419;** BL.06\*:162p

**Carnet de dessins L008 (III).** Golfe-Juan. 6-November/1947. Pencil on paper. 24,5 x 15,5 cm. Private collection. Formerly Heinz Berggruen Collection.

**OPP.47:420;** BL.06\*:162p





**Carnet de dessins L007 (II)**. Golfe-Juan. 6-November/1947. Pencil on paper. 24,5 x 15,5 cm. Private collection. Formerly Heinz Berggruen Collection.

**OPP.47:421**; BL.06\*:162p

**Carnet de dessins L009 (IV)**. Golfe-Juan. 6-November/1947. Pencil on paper. 24,5 x 15,5 cm. Private collection. Formerly Heinz Berggruen Collection.

**OPP.47:422**; BL.06\*:162p





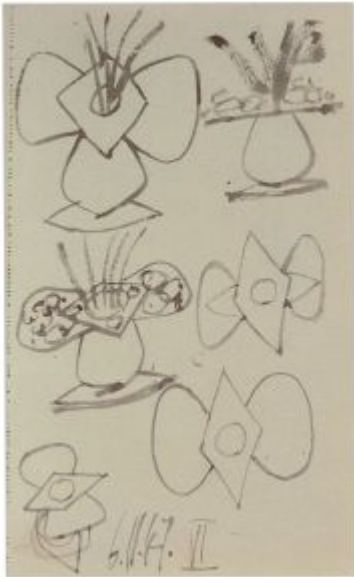
**Carnet de dessins L010 (V).** Golfe-Juan. 6-November/1947. Pencil on paper. 24,5 x 15,5 cm. Private collection. Formerly Heinz Berggruen Collection.

**OPP.47:423**; BL.06\*:163p

**Carnet de dessins L012 (VII).** Golfe-Juan. 6-November/1947. Pencil on paper. 24,5 x 15,5 cm. Private collection. Formerly Heinz Berggruen Collection.

**OPP.47:424**; BL.06\*:163p





**Carnet de dessins L011 (VI).** Golfe-Juan. 6-November/1947. Pencil on paper. 24,5 x 15,5 cm. Private collection. Formerly Heinz Berggruen Collection.

**OPP.47:425**; BL.06\*:163p

**Carnet de dessins L014 (IX).** Golfe-Juan. 6-November/1947. Pencil on paper. 24,5 x 15,5 cm. Private collection. Formerly Heinz Berggruen Collection.

**OPP.47:427**; BL.06\*:164p



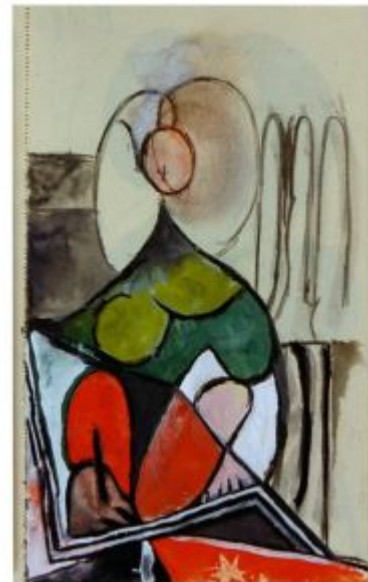


**Carnet de dessins L016 (XI).** Golfe-Juan. 6-November/1947. Ink & wash on paper. 24,5 x 15,5 cm. Private collection. Formerly Heinz Berggruen Collection.

**OPP.47:429;** BL.06\*:164p

**Carnet de dessins L015.** Golfe-Juan. [8-November]/1947. Ink & wash on paper. 24,5 x 15,5 cm. Private collection. Formerly Heinz Berggruen Collection.

**OPP.47:428;** BL.06\*:164p





**Carnet de dessins L017.** Golfe-Juan. 8-November/1947. Ink & wash on paper. 24,5 x 15,5 cm. Private collection. Formerly Heinz Berggruen Collection.

**OPP.47:430**; BL.06\*:164p

**Carnet de dessins L018.** Golfe-Juan. 9-November/1947. Pencil on paper. 24,5 x 15,5 cm. Private collection. Formerly Heinz Berggruen Collection.

**OPP.47:431**; BL.06\*:164p





**Nature morte au compotier et à la cafetière.** Golfe-Juan. 19-November/1947. Watercolor on paper. 50,5 x 65,5 cm. Musée Picasso, Antibes. On loan from Musée Picasso, Paris. Jacqueline Roque Picasso Collection. Dation 1990.

**OPP.47:155**; MPA:1991.29; MPP:1990.88; PP.47:067; CB.11:184p; CE.04\*:51; GL.81\*:7s; GR.90\*:85; MG.03b\*:61

---

**Compotier et cafetière.** Golfe-Juan. 19-November/1947. Gouache [OïC]. 50,5 x 66 cm. Private collection.

**OPP.47:532**; PP.47:066; Z.XV:21







**Carnet de dessins L019: sculpture (I).** Golfe-Juan. 20-November/1947. Ink on paper. 24,5 x 15,5 cm. Private collection. Formerly Heinz Berggruen Collection.

**OPP.47:432;** BL.06\*:165p



**Carnet de dessins L020: sculpture (II).** Golfe-Juan. 20-November/1947. Ink on paper. 24,5 x 15,5 cm. Private collection. Formerly Heinz Berggruen Collection.

**OPP.47:433;** BL.06\*:165p

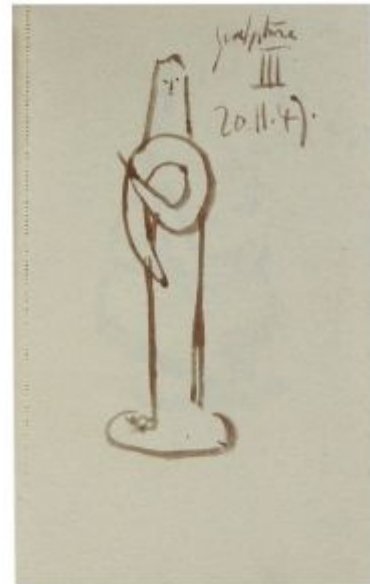


**Carnet de dessins L022: sculpture (IV).** Golfe-Juan. 20-  
November/1947. Ink on paper. 24,5 x 15,5 cm. Private collection.  
Formerly Heinz Berggruen Collection.

**OPP.47:434;** BL.06\*:165p

**Carnet de dessins L021: sculpture (III).** Golfe-Juan. 20-  
November/1947. Ink on paper. 24,5 x 15,5 cm. Private  
collection. Formerly Heinz Berggruen Collection.

**OPP.47:435;** BL.06\*:165p



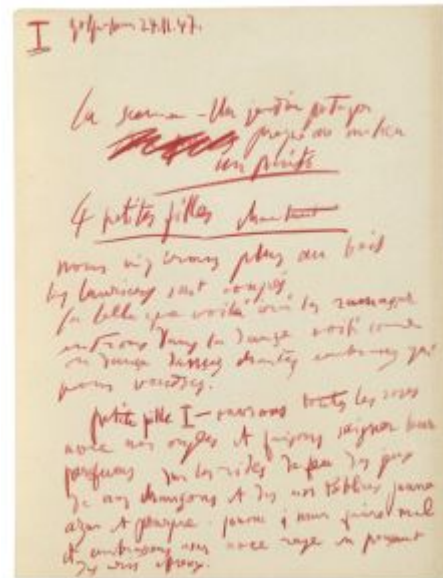


**Carnet de dessins L023: sculpture (V).** Golfe-Juan. 20-November/1947. Ink on paper. 24,5 x 15,5 cm. Private collection. Formerly Heinz Berggruen Collection.

**OPP.47:436**; BL.06\*:165p

**Les Quatre Petites Filles I.** Golfe-Juan. 24-November/1947 [~13-August/1948]. Red pencil on vellum paper. 35,5 x 26,5 cm. Musée Picasso, Paris. Dation 1979.

**OPP.47:161**; MPP:3662.01p; BA.18:216p; BP.21:430p; CW.89:299p; KB.04:119p; PA.20j:132p; PP.19:264p



XXXVI  
 petite fille I le verre est cassé le verre  
 cassé le verre est cassé le verre de verre  
 et j'ai l'impression ses cheveux mais  
 le long verre ~~est cassé~~  
 et l'airage est en train de se casser  
 et rompt ~~le verre~~ les coupes  
~~est cassé~~ de cristal si délicatement  
 pour les fleurs de fleurs pour tous  
 à son passage  
 petite fille II regarde j'avais rempli  
 cette coupe d'eau j'ai retiré le  
 verre et l'eau est restée  
 à sa place sur la table  
 maintenant mes mains - maintenant  
 j'ai cassé le verre et j'ai  
 mis mes mains sur la table  
 petite fille III (elle approche son verre)

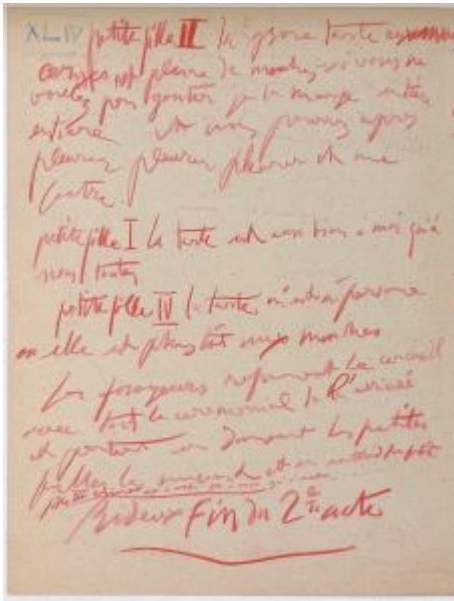
**Les Quatre Petites Filles XXXVI.** Golfe-Juan. 24-  
 November/1947 [~13-August/1948]. Ink on paper. 35,5 x 26,5  
 cm. Musée Picasso, Paris.

**OPP.47:203**; MPP:3662.36p; AM.08:130p

**Les Quatre Petites Filles XXXVII.** Golfe-Juan. 24-  
 November/1947 [~13-August/1948]. Red & blue pencil  
 on vellum paper. 35,5 x 26,5 cm. Musée Picasso, Paris.  
 Dation 1979.

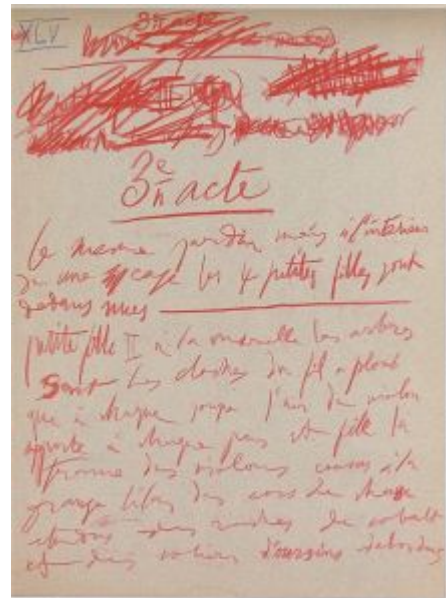
**OPP.47:204**; MPP:3662.37p; AM.08:130p; PP.19:266

XXXVII Le verre est brisé (ou est cassé)  
 comme il est de verre de verre  
 petite fille II et chaise  
 petite fille I et la table le verre est cassé et le  
 verre est cassé  
 petite fille II j'ai l'œil de terre j'ai mesuré  
 mes mains ~~est cassé~~ verre  
 petite fille I il se voit  
 petite fille III la chaise maintenant voit  
 petite fille II le verre est cassé  
 petite fille I A ton verre  
 petite fille II briser des fleurs vertes  
 le verre est cassé et cassé et cassé  
 maintenant la chaise de verre fait  
 comme il est et cassé et cassé  
 en verre et cassé et cassé



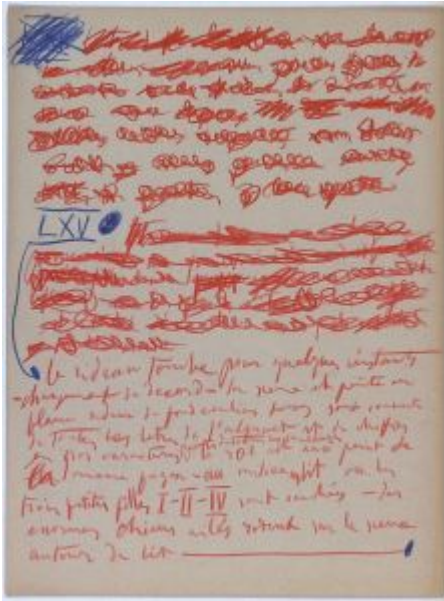
**Les Quatre Petites Filles XLIV.** Golfe-Juan. 24-November/1947 [~13-August/1948]. Ink on paper. 35,5 x 26,5 cm. Musée Picasso, Paris.

OPP.47:205; MPP:3662.44p; AM.08:131p



**Les Quatre Petites Filles XLV.** Golfe-Juan. 24-November/1947 [~13-August/1948]. Ink on paper. 35,5 x 26,5 cm. Musée Picasso, Paris.

OPP.47:206; MPP:3662.45p; AM.08:131p

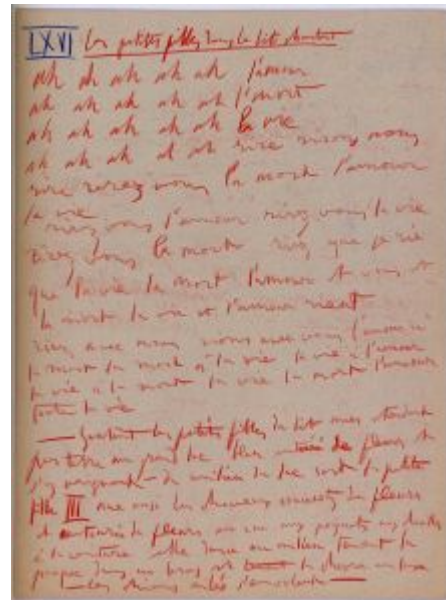


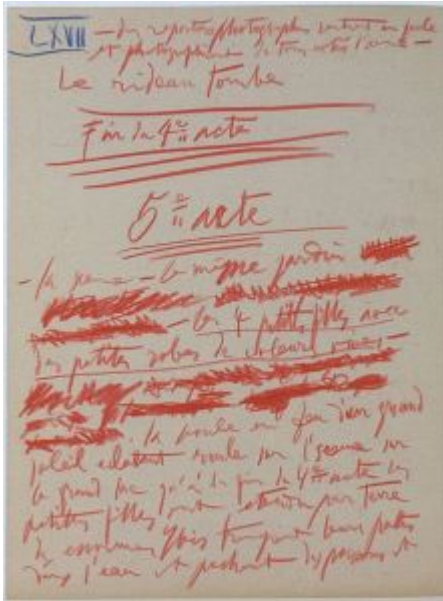
**Les Quatre Petites Filles LXV.** Golfe-Juan. 24-November/1947 [~13-August/1948]. Ink on paper. 35,5 x 26,5 cm. Musée Picasso, Paris.

OPP.47:207; MPP:3662.65p; AM.08:132p

**Les Quatre Petites Filles LXVI.** Golfe-Juan. 24-November/1947 [~13-August/1948]. Ink on paper. 35,5 x 26,5 cm. Musée Picasso, Paris.

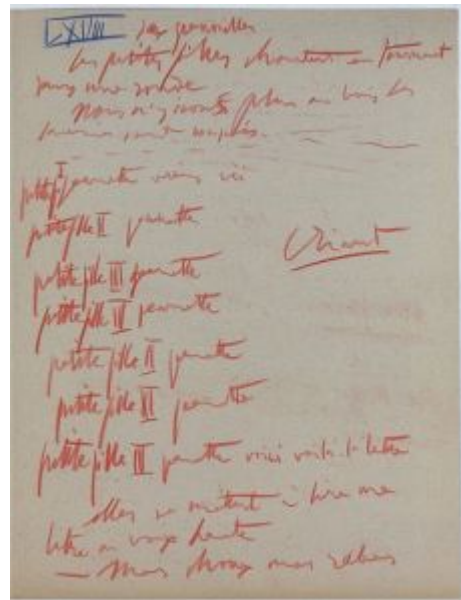
OPP.47:208; MPP:3662.66p; AM.08:133p





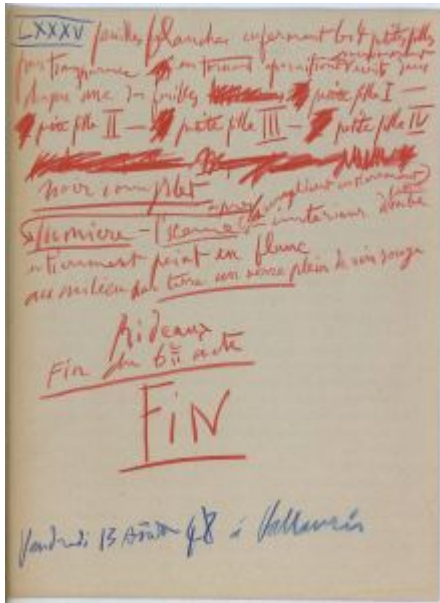
**Les Quatre Petites Filles LXVII.** Golfe-Juan. 24-November/1947 [~13-August/1948]. Ink on paper. 35,5 x 26,5 cm. Musée Picasso, Paris.

OPP.47:209; MPP:3662.67p; AM.08:134p



**Les Quatre Petites Filles LXVIII.** Golfe-Juan. 24-November/1947 [~13-August/1948]. Ink on paper. 35,5 x 26,5 cm. Musée Picasso, Paris.

OPP.47:210; MPP:3662.68p; AM.08:134p

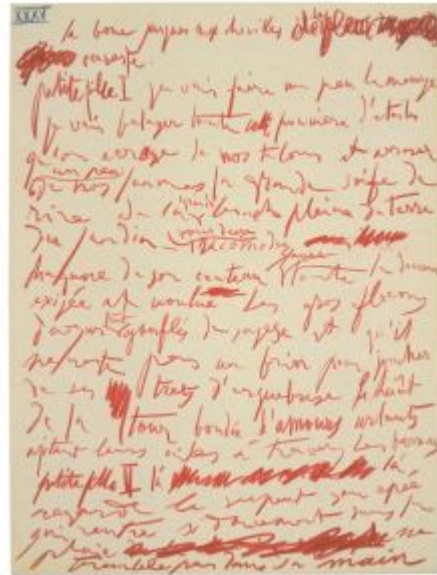


**Les Quatre Petites Filles LXXXV.** Golfe-Juan. 24-November/1947 [~13-August/1948]. India ink on vellum paper. 35,5 x 26,5 cm. Musée Picasso, Paris.

**OPP.47:211**; MPP:3662.85p; AM.08:135p; BA.18:227p; CW.89:327p

**Les Quatre Petites Filles XXXV.** Golfe-Juan. 24-November/1947 [~13-August/1948]. Red & blue color pencil on vellum paper. 35,5 x 26,5 cm. Musée Picasso, Paris. Dation 1979.

**OPP.47:520**; MPP:3662.35p; PP.19:265p









**Les Quatre Petites Filles.** Golfe-Juan. 24-November/1947~13-August/1948. India ink on vellum paper. 35,5 x 26,5 cm. Musée Picasso, Paris. Dation 1979.

**OPP.47:527**; MPP:3662; PP.19:263p

**Page figurant au début des 'Quatre petites filles'.** Paris. 24-November/1947~13-August/1948. India ink on vellum. 35,8 x 26,8 cm. Musée Picasso, Paris.

**OPP.47:160**; BP.21:428p; CW.89:298p; KB.04:116p; PA.20j:131p



LXXXI  
 petite fille IV charbon ardent ~~deuxième~~ algues  
 à fleur de lis de glat de sang  
 manne des lantes rivieres poudres aux  
 pills electriques en ecailles  
 petite fille II main detachée de la joue  
 tombant à pic sur fleur d'arante  
 le long du bras plonge de tout  
 son lot de pulbes de jiquant en  
 albatros aux carminatures harmoniques  
 freises de l'apari<sup>ons</sup> ~~de~~ plospace  
 faite in-pronon par le blanc  
 lilas beaurant au bout de la  
 tige la singuliere apparition bee-jugos  
 à l'lie au coeur du marbre ~~de~~  
 enche ~~de~~ ~~de~~ le masque point couleur  
 chair

**Les Quatre Petites Filles LXXXII.** Golfe-Juan. 24-  
 November/1947 [~13-August/1948]. Ink on paper. 35,5 x 26,5  
 cm. Musée Picasso, Paris. Dation 1979.

**OPP.47:162**; MPP:3662.82p; CW.89:324p

**Les Quatre Petites Filles LXXXIII.** Golfe-Juan. 24-  
 November/1947 [~13-August/1948]. Ink on paper. 35,5  
 x 26,5 cm. Musée Picasso, Paris. Dation 1979.

**OPP.47:163**; MPP:3662.83p; CW.89:325p; KB.04:118p

LXXXII  
 les 4 petites filles percent le serpent  
 et se jettent comme dans une grande fourmilière  
 de petits corps dans l'air sur les fourmis  
 volants et les abeilles  
~~derrière le~~  
 jardin parmis quelques jeunes garçons  
 jouant de l'arc de son et de l'arc  
 « le petit vin blanc qu'on boit  
 dans les ~~châteaux~~ ~~châteaux~~ »  
 et de grands éclats de rire  
 la nuit tombe - les étoiles - la lune  
 fin les astres - les grillons - les grenouilles  
 les crickets - quelques cigales - les  
 sautillants - les faucons - une vitre  
~~de~~ parfum - le jasmyn rempli la  
 jule et on entend en leur aboyer  
 un chien - après - tout le jardin s'éclaircit  
 chaque feuille et une fleur de bougainville  
 fleurit et un lampion de sa couleur



**Dessins pour le décor d'Œdipe Roi.** Paris.  
[December]/1947. Mixed media. 25,5 x 33 cm.  
Private collection.

**OPP.47:189**; BH.06\*:227p; PA.01c\*:n/a

**Fillette.** Golfe-Juan. December/1947. Pastel &  
graphite on card. 4,5 x 4 cm. Fundación Almine  
& Bernard Ruiz-Picasso para el Arte.

**OPP.47:314**; JR.12\*:126p; PP.20\*:344





**Mère assise tenant un enfant sur ses genoux.** Golfe-Juan.  
December/1947. Pastel & graphite on card. 14 x 10,3 cm.  
Fundación Almine & Bernard Ruiz-Picasso para el Arte.

**OPP.47:315**; JR.12\*:126p; PP.20\*:345



**La mère et l'enfant.** Golfe-Juan. December/1947. Pastel &  
graphite on card. 14 x 7 cm. Private collection.

**OPP.47:316**; JR.12\*:126p



**Enfant encapuchonné.** Golfe-Juan. December/1947. Pastel & graphite on card. 8 x 5 cm. Private collection.

**OPP.47:317**; JR.12\*:126p

---

**Enfant au hochet.** Golfe-Juan. December/1947. Pastel & graphite on card. 14 x 11 cm. Private collection.

**OPP.47:318**; JR.12\*:127p





**La mère et l'enfant au hochet rouge.** Golfe-Juan. December/1947.  
Pastel & graphite on card. 14 x 7,5 cm. Private collection.

**OPP.47:319**; JR.12\*:127p

**La mère et l'enfant au hochet violet.** Golfe-Juan.  
December/1947. Pastel & graphite on card. 14 x 7,5 cm. Private  
collection.

**OPP.47:320**; JR.12\*:127p





**Enfant aux chaussons.** Golfe-Juan. December/1947. Pastel & graphite on card. 14,2 x 10 cm. Private collection.

**OPP.47:321**; JR.12\*:127p

**Dessins pour le décor d'Œdipe Roi.**  
Paris. [December]/1947. Mixed media.  
25,5 x 33 cm. Private collection.

**OPP.47:470**; BH.06\*:227p; PA.01c\*:n/a





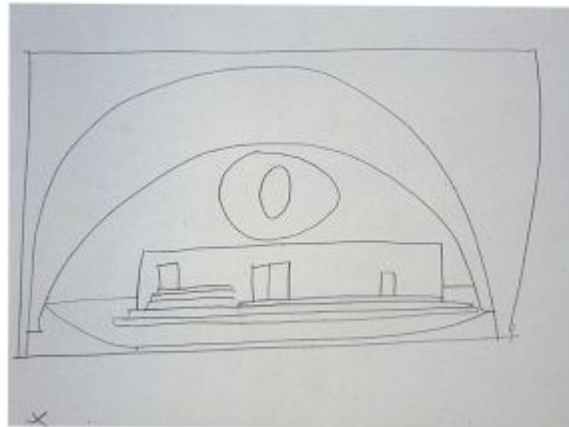


**Dessins pour le décor d'Œdipe Roi.** Paris. [December]/1947. Mixed media. 25,5 x 33 cm. Private collection.

**OPP.47:471**; BH.06\*:224p; PA.01c\*:n/a

**Dessins pour le décor d'Œdipe Roi.** Paris. [December]/1947. Mixed media. 25,5 x 33 cm. Private collection.

**OPP.47:472**; BH.06\*:225p; PA.01c\*:n/a





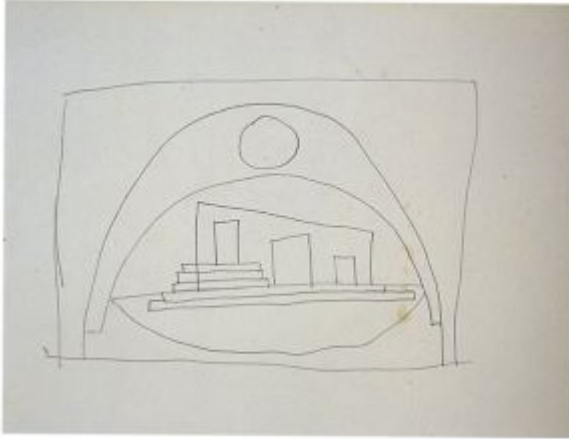
**Dessins pour le décor d'Œdipe Roi.** Paris. [December]/1947. Mixed media. 25,5 x 33 cm. Private collection.

**OPP.47:473**; BH.06\*:225p; PA.01c\*:n/a

**Dessins pour le décor d'Œdipe Roi.** Paris. [December]/1947. Mixed media. 25,5 x 33 cm. Private collection.

**OPP.47:474**; BH.06\*:225p; PA.01c\*:n/a



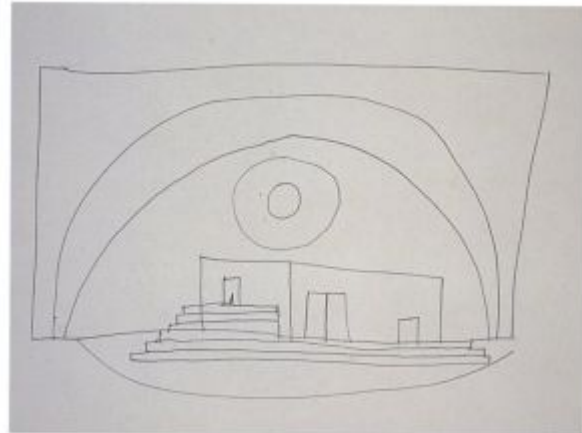


**Dessins pour le décor d'Œdipe Roi.** Paris. [December]/1947. Mixed media. 25,5 x 33 cm. Private collection.

**OPP.47:475**; BH.06\*:225p; PA.01c\*:n/a

**Dessins pour le décor d'Œdipe Roi.** Paris. [December]/1947. Mixed media. 25,5 x 33 cm. Private collection.

**OPP.47:476**; BH.06\*:225p; PA.01c\*:n/a



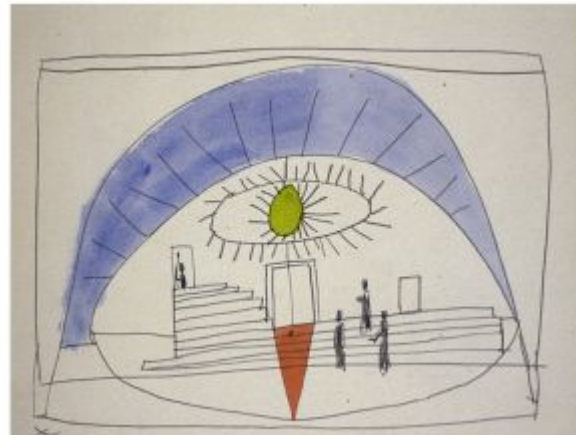


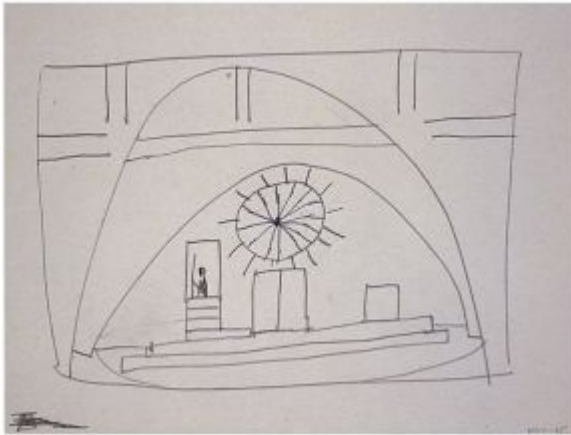
**Dessins pour le décor d'Œdipe Roi.** Paris.  
[December]/1947. Mixed media. 25,5 x 33 cm.  
Private collection.

**OPP.47:477**; BH.06\*:225p; PA.01c\*:n/a

**Dessins pour le décor d'Œdipe Roi.**  
Paris. [December]/1947. Mixed media.  
25,5 x 33 cm. Private collection.

**OPP.47:478**; BH.06\*:226p; PA.01c\*:n/a



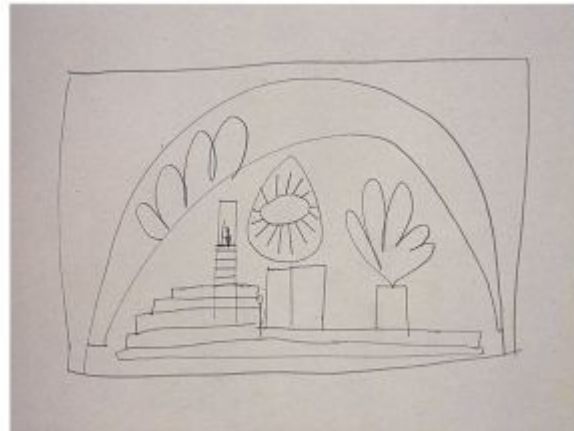


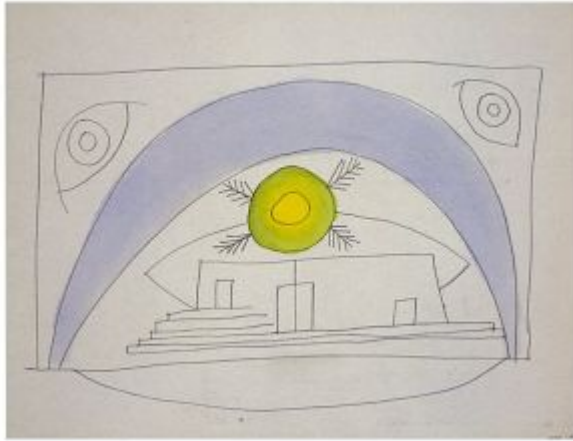
**Dessins pour le décor d'Œdipe Roi.** Paris. [December]/1947. Mixed media. 25,5 x 33 cm. Private collection.

**OPP.47:479**; BH.06\*:226p; PA.01c\*:n/a

**Dessins pour le décor d'Œdipe Roi.** Paris. [December]/1947. Mixed media. 25,5 x 33 cm. Private collection.

**OPP.47:480**; BH.06\*:226p; PA.01c\*:n/a



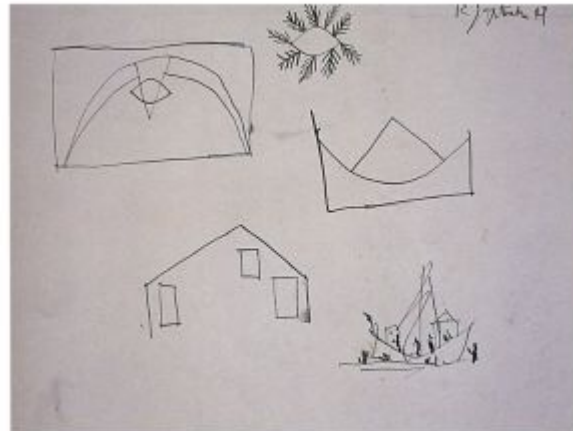


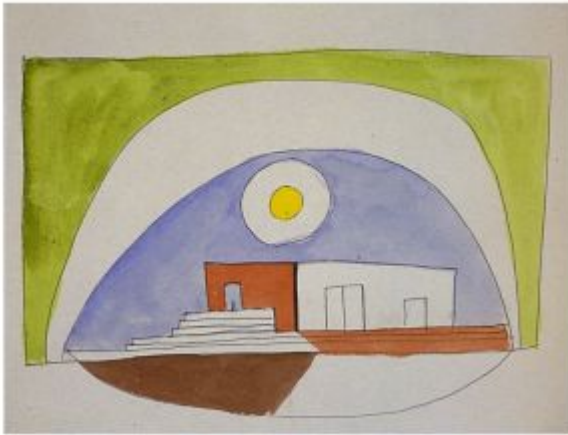
**Dessins pour le décor d'Œdipe Roi.** Paris. [December]/1947. Mixed media. 25,5 x 33 cm. Private collection.

**OPP.47:481**; BH.06\*:226p; PA.01c\*:n/a

**Dessins pour le décor d'Œdipe Roi.** Paris. [December]/1947. Mixed media. 25,5 x 33 cm. Private collection.

**OPP.47:482**; BH.06\*:226p; PA.01c\*:n/a



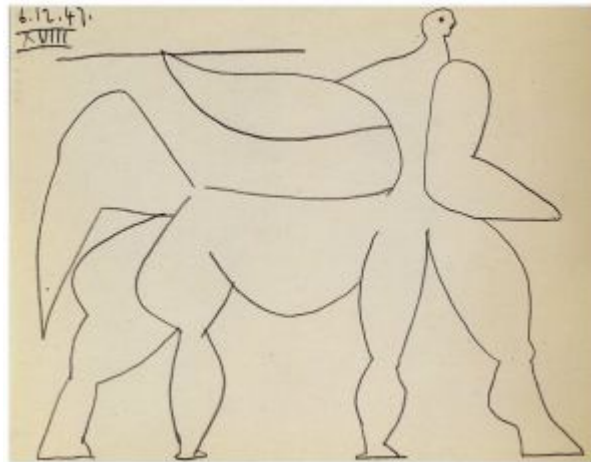


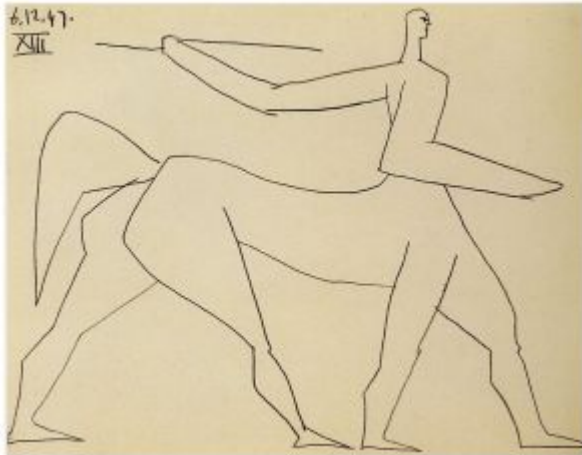
**Dessins pour le décor d'Œdipe Roi.** Paris.  
[December]/1947. Mixed media. 25,5 x 33 cm.  
Private collection.

**OPP.47:483**; BH.06\*:226p; PA.01c\*:n/a

**Centaure XVIII.** Golfe-Juan. 6-  
December/1947. Pencil on paper. 21 x 27  
cm. Fundación Almine & Bernard Ruiz-  
Picasso para el Arte.

**OPP.47:366**; JV.06\*:177p





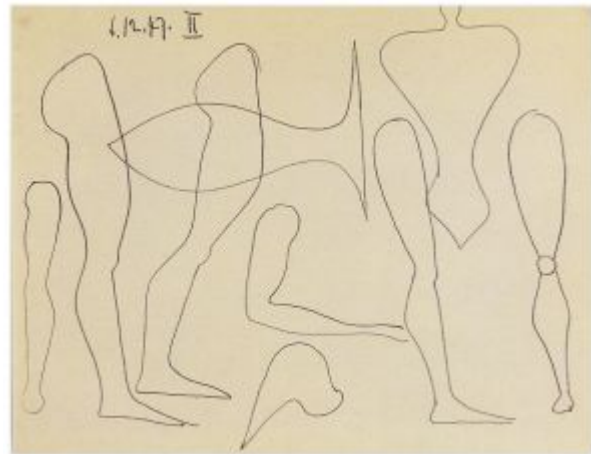
**Centaure XIII.** Golfe-Juan. 6-December/1947. Ink. 21 x 27 cm. Fundación Almine & Bernard Ruiz-Picasso para el Arte.

**OPP.47:241**; JV.06\*:175p

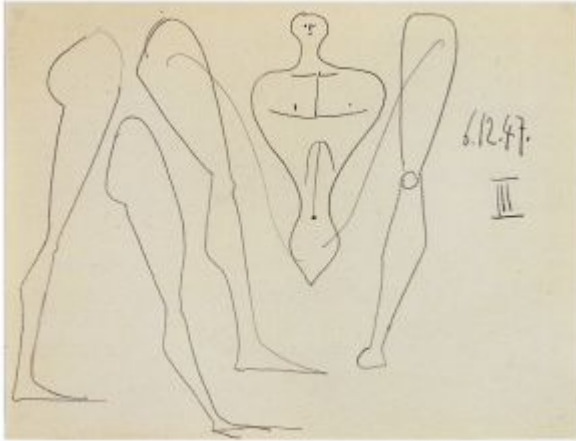
---

**Centaure II.** Golfe-Juan. 6-December/1947. Pencil on paper. 21 x 27 cm. Fundación Almine & Bernard Ruiz-Picasso para el Arte.

**OPP.47:351**; JV.06\*:172p







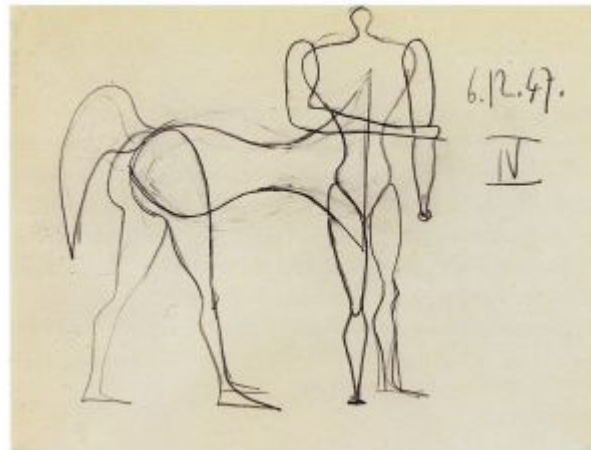
**Centaure III.** Golfe-Juan. 6-December/1947. Pencil on paper. 21 x 27 cm. Fundación Almine & Bernard Ruiz-Picasso para el Arte.

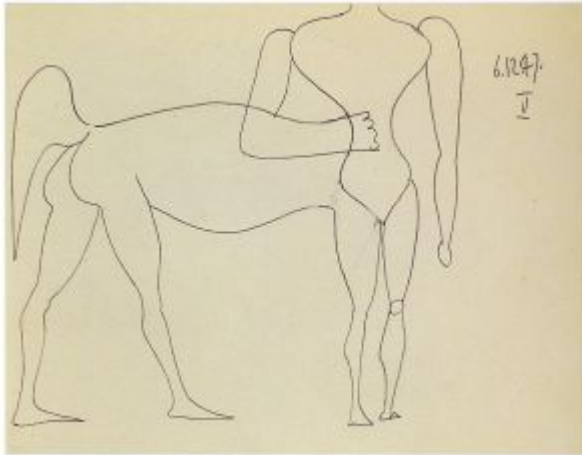
**OPP.47:352**; JV.06\*:172p

---

**Centaure IV.** Golfe-Juan. 6-December/1947. Pencil on paper. 21 x 27 cm. Fundación Almine & Bernard Ruiz-Picasso para el Arte.

**OPP.47:353**; JV.06\*:172p





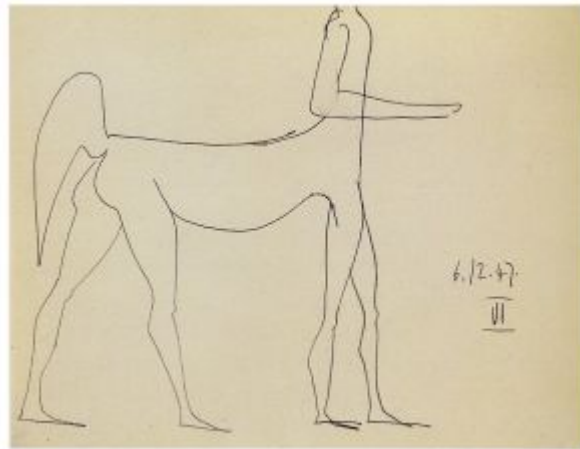
**Centaure V.** Golfe-Juan. 6-December/1947. Pencil on paper. 21 x 27 cm. Fundación Almine & Bernard Ruiz-Picasso para el Arte.

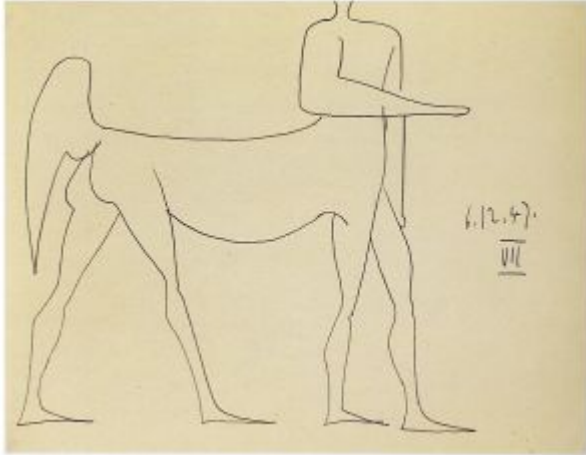
**OPP.47:354**; JV.06\*:173p

---

**Centaure VI.** Golfe-Juan. 6-December/1947. Pencil on paper. 21 x 27 cm. Fundación Almine & Bernard Ruiz-Picasso para el Arte.

**OPP.47:355**; JV.06\*:173p





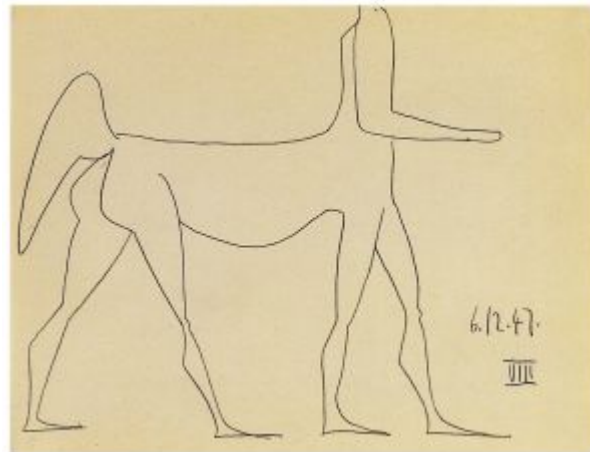
**Centaure VII.** Golfe-Juan. 6-December/1947.  
Pencil on paper. 21 x 27 cm. Fundación Almine &  
Bernard Ruiz-Picasso para el Arte.

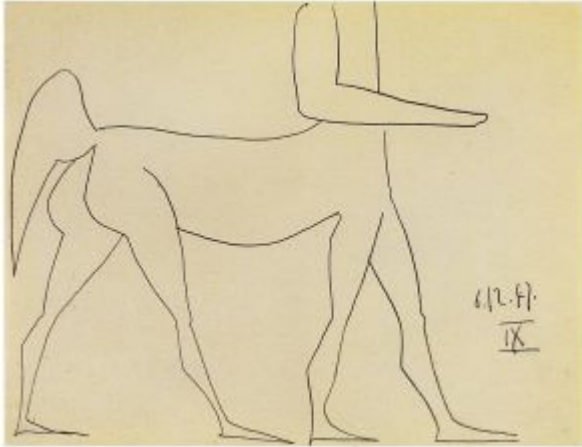
**OPP.47:356**; JV.06\*:173p

---

**Centaure VIII.** Golfe-Juan. 6-  
December/1947. Pencil on paper. 21 x 27  
cm. Fundación Almine & Bernard Ruiz-  
Picasso para el Arte.

**OPP.47:357**; JV.06\*:174p





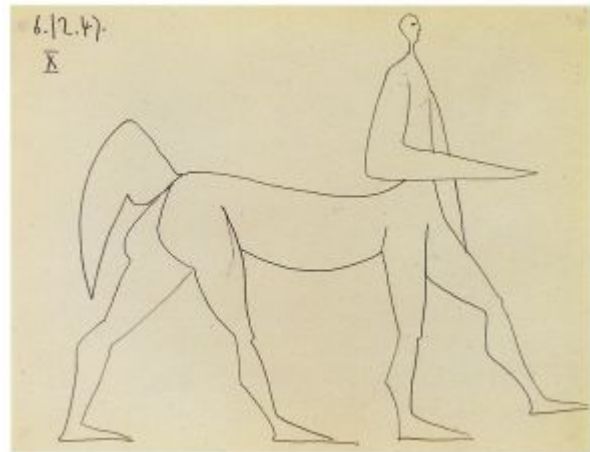
**Centaure IX.** Golfe-Juan. 6-December/1947. Pencil on paper. 21 x 27 cm. Fundación Almine & Bernard Ruiz-Picasso para el Arte.

**OPP.47:358**; JV.06\*:174p

---

**Centaure X.** Golfe-Juan. 6-December/1947. Pencil on paper. 21 x 27 cm. Fundación Almine & Bernard Ruiz-Picasso para el Arte.

**OPP.47:359**; JV.06\*:174p





**Centaure XI.** Golfe-Juan. 6-December/1947.  
Pencil on paper. 21 x 27 cm. Fundación Almine &  
Bernard Ruiz-Picasso para el Arte.

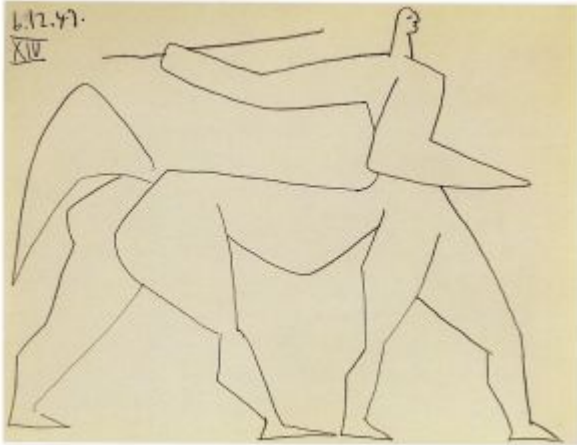
**OPP.47:360**; JV.06\*:175p

---

**Centaure XII.** Golfe-Juan. 6-  
December/1947. Pencil on paper. 21 x 27  
cm. Fundación Almine & Bernard Ruiz-  
Picasso para el Arte.

**OPP.47:361**; JV.06\*:175p





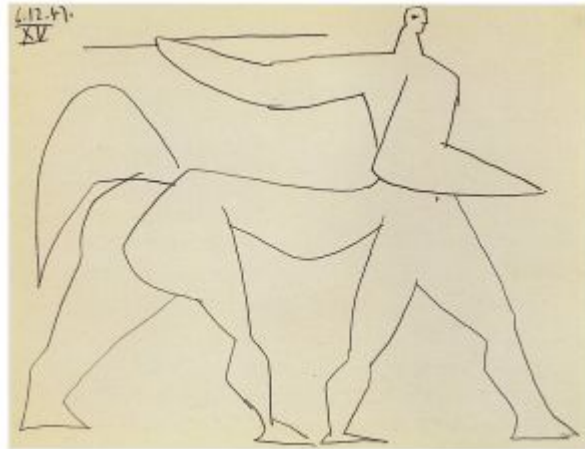
**Centaure XIV.** Golfe-Juan. 6-December/1947. Pencil on paper. 21 x 27 cm. Fundación Almine & Bernard Ruiz-Picasso para el Arte.

**OPP.47:362**; JV.06\*:176p

---

**Centaure XV.** Golfe-Juan. 6-December/1947. Pencil on paper. 21 x 27 cm. Fundación Almine & Bernard Ruiz-Picasso para el Arte.

**OPP.47:363**; JV.06\*:176p





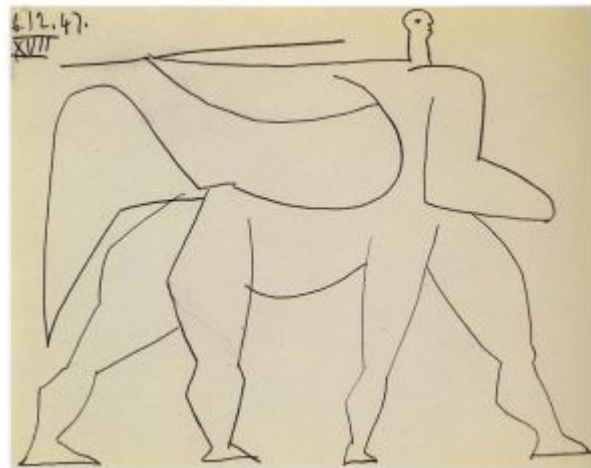
**Centaure XVI.** Golfe-Juan. 6-December/1947.  
Pencil on paper. 21 x 27 cm. Fundación Almine &  
Bernard Ruiz-Picasso para el Arte.

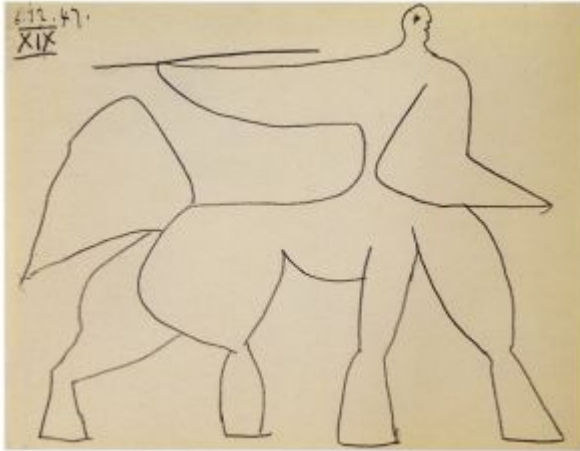
**OPP.47:364**; JV.06\*:176p

---

**Centaure XVII.** Golfe-Juan. 6-  
December/1947. Pencil on paper. 21 x 27  
cm. Fundación Almine & Bernard Ruiz-  
Picasso para el Arte.

**OPP.47:365**; JV.06\*:177p





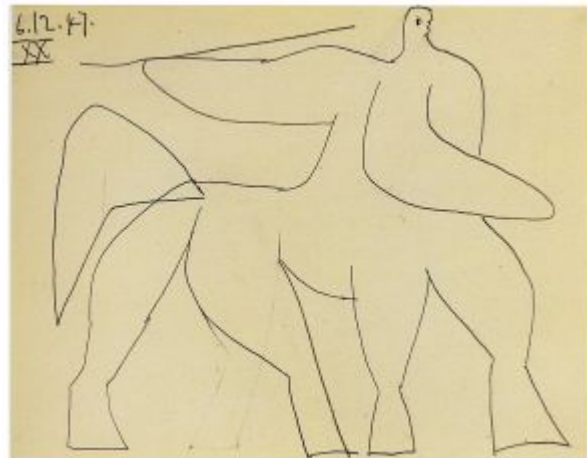
**Centaure XIX.** Golfe-Juan. 6-December/1947. Pencil on paper. 21 x 27 cm. Fundación Almine & Bernard Ruiz-Picasso para el Arte.

**OPP.47:367**; JV.06\*:177p

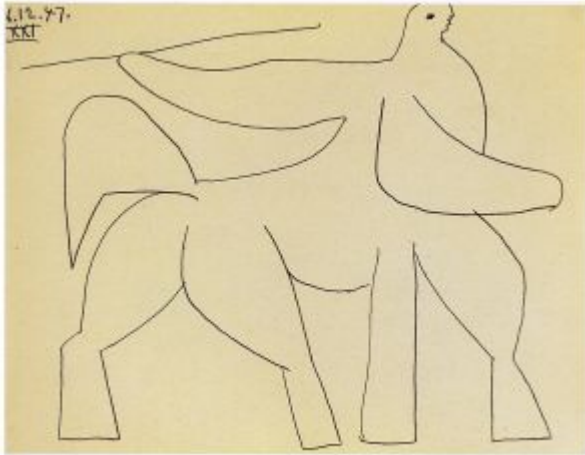
---

**Centaure XX.** Golfe-Juan. 6-December/1947. Pencil on paper. 21 x 27 cm. Fundación Almine & Bernard Ruiz-Picasso para el Arte.

**OPP.47:368**; JV.06\*:178p







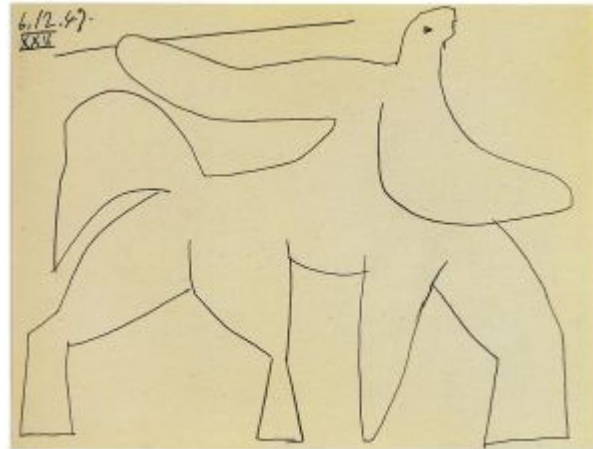
**Centaure XXI.** Golfe-Juan. 6-December/1947. Pencil on paper. 21 x 27 cm. Fundación Almine & Bernard Ruiz-Picasso para el Arte.

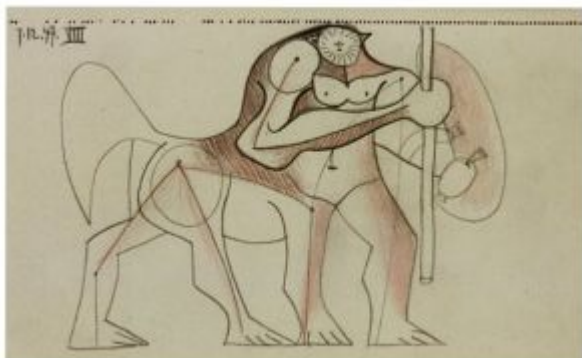
**OPP.47:369**; JV.06\*:178p

---

**Centaure XXII.** Golfe-Juan. 6-December/1947. Pencil on paper. 21 x 27 cm. Fundación Almine & Bernard Ruiz-Picasso para el Arte.

**OPP.47:370**; JV.06\*:178p



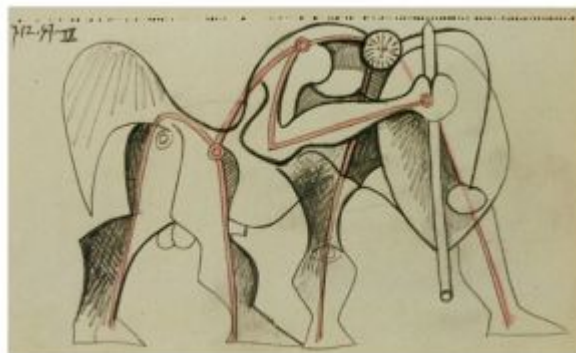


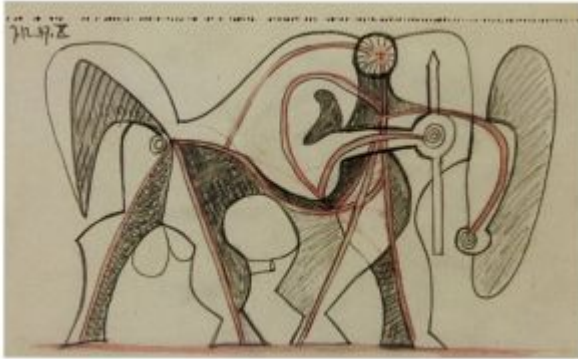
**Carnet de dessins L032 (VIII).** Golfe-Juan. 7-December/1947. Pencil & color pencil on paper. 24,5 x 15,5 cm. Private collection. Formerly Heinz Berggruen Collection.

**OPP.47:437**; BL.06\*:166p

**Carnet de dessins L033 (IX).** Golfe-Juan. 7-December/1947. Pencil & color pencil on paper. 24,5 x 15,5 cm. Private collection. Formerly Heinz Berggruen Collection.

**OPP.47:438**; BL.06\*:166p





**Carnet de dessins L034 (X)**. Golfe-Juan. 7-December/1947. Pencil & color pencil on paper. 24,5 x 15,5 cm. Private collection. Formerly Heinz Berggruen Collection.

**OPP.47:439**; BL.06\*:166p

---

**Carnet de dessins L035**. Golfe-Juan. 8-December/1947. Pencil & color pencil on paper. 24,5 x 15,5 cm. Private collection. Formerly Heinz Berggruen Collection.

**OPP.47:441**; BL.06\*:167p



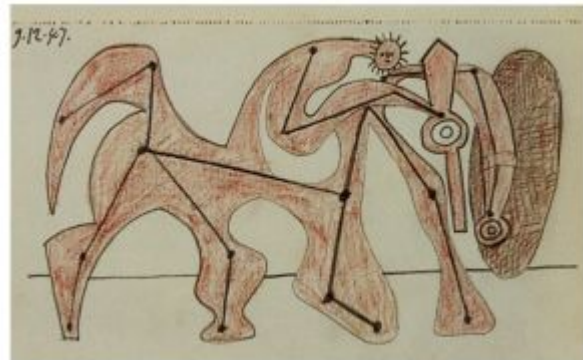


**Centaure (Ivan Goran Kovatchitch, La Fosse Commune).** Golfe-Juan. 9-December/1947. Etching, edition 100. 28,5 x 23,2 cm. Sotheby's. #275, L05161, 09/27/05.

**OPP.47:127;** B.I:461; GC:49; PA.19d\*:215

**Carnet de dessins L036.** Golfe-Juan. 9-December/1947. Pencil & color pencil on paper. 24,5 x 15,5 cm. Private collection. Formerly Heinz Berggruen Collection.

**OPP.47:440;** BL.06\*:166p





**Carnet de dessins L037.** Golfe-Juan. 9-December/1947. Pencil & color pencil on paper. 24,5 x 15,5 cm. Private collection. Formerly Heinz Berggruen Collection.

**OPP.47:442;** BL.06\*:167p

**Combat dans l'arène.** Golfe-Juan. 9-December/1947. Burin & drypoint. 36,5 x 25,8 cm. Musée Picasso, Paris. Dation 1979.

**OPP.47:581;** Ba:792; MPP:2980





**Homme sur fond bleu.** Vallauris. 11-December/1947. White clay, incised, decorated with engobe & partially glazed. 38 x 32 x 3,9 cm. Museu Picasso, Barcelona. Donation 1982.

**OPP.47:299**; MPB:112.440

---

**La femme-fleur (Françoise Gilot).** Golfe-Juan. 14-December/1947. Oil on panel & stone. 73 x 20 cm. Private collection.

**OPP.47:311**; JA.09\*:179p; TO.04\*:175



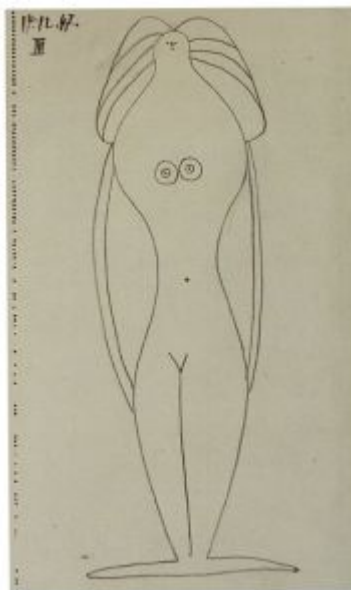


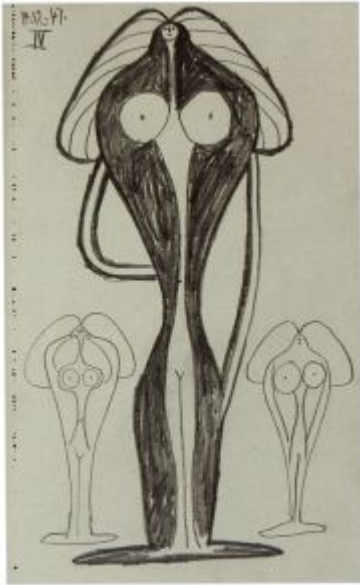
**Carnet de dessins L039 (II).** Golfe-Juan. 14-December/1947. Pencil on paper. 24,5 x 15,5 cm. Private collection. Formerly Heinz Berggruen Collection.

**OPP.47:443**; BL.06\*:168p

**Carnet de dessins L040 (III).** Golfe-Juan. 14-December/1947. Pencil on paper. 24,5 x 15,5 cm. Private collection. Formerly Heinz Berggruen Collection.

**OPP.47:444**; BL.06\*:168p



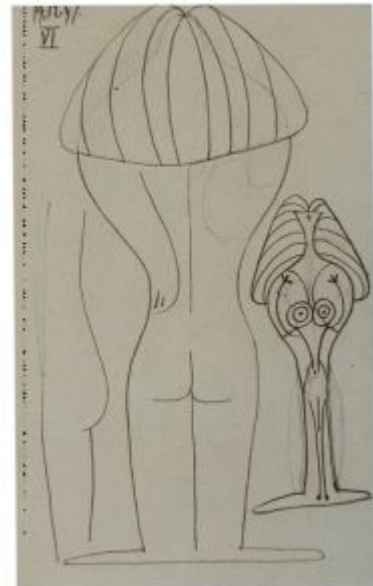


**Carnet de dessins L041 (IV)**. Golfe-Juan. 14-December/1947. Pencil on paper. 24,5 x 15,5 cm. Private collection. Formerly Heinz Berggruen Collection.

**OPP.47:445**; BL.06\*:168p

**Carnet de dessins L043 (VI)**. Golfe-Juan. 14-December/1947. Pencil on paper. 24,5 x 15,5 cm. Private collection. Formerly Heinz Berggruen Collection.

**OPP.47:446**; BL.06\*:168p







**Carnet de dessins L038 (I)**. Golfe-Juan. 14-December/1947. Pencil on paper. 24,5 x 15,5 cm. Private collection. Formerly Heinz Berggruen Collection.

**OPP.47:447**; BL.06\*:169p

**Tête d'homme I**. Vallauris. 15-December/1947. Hand painted white terracotta plate. 37,9 x 32,1 cm. Hammer Galleries. 2006.

**OPP.47:142**





**Femme nue assise avec faune flûtiste.**

Vallauris. 15-December/1947. White terracotta. 22 cm. Private collection.

**OPP.47:372**; CE.04\*:109

---

**Homme barbu.** Vallauris. 15-December/1947. Painted & partially glazed ceramic; plat long. 38 x 32 cm. Sotheby's. #207, L15007, 06/29/15.

**OPP.47:405**





**Faunes musiciens et femme VIII.** Vallauris. 15-December/1947. White earthenware, painted black & ochre. 22,2 cm. Marina Picasso Collection.

**OPP.47:408**; KU.99\*:6

---

**Faune barbu.** Vallauris. 15-December/1947. Painted & partially glazed ceramic; plat long. 38 x 32 cm. Sotheby's. #157, L15007, 06/25/15.

**OPP.47:454**





**Centaure tenant une arme.** [Paris]. [End]/1947. Black ink on cut-out paper glued on packing wrapping embossed in black. 16,5 x 15 cm. Musée Picasso, Paris. Gift of Paloma Picasso-López, 1983.

**OPP.47:248**; MPP:1983.5; PP.47:069; CK.04\*:99

---

**Femme nue debout.** Paris. [End]/1947. Black ink on cut-out paper glued on packing wrapping embossed in black. 15,2 x 15 cm. Musée Picasso, Paris. Formerly Paloma Ruiz-Picasso Collection.

**OPP.47:518**; MPP:1983.4; PP.47:071





**Homme nu debout.** Paris. [End]/1947. Color pencil on cut-out paper glued on packing wrapping embossed in black. 13,9 x 14 cm. Musée Picasso, Paris. Formerly Paloma Ruiz-Picasso Collection.

**OPP.47:523**; MPP:1983.3; PP.47:070; PP.20\*:342

---

**Petit masque de faune.** Vallauris. 1947. Terracotta, engraved and painted with yellow, chestnut & brown enamel. 31 x 38 x 4 cm. Private collection.

**OPP.47:082**





**Service poisson.** Vallauris. 1947. Painted and glazed soup tureen, edition 300. 32 cm. Sotheby's. #237, W05711, 10/26/05.

**OPP.47:125**; AR:22

**Tête de faune.** Vallauris. [1947]. White terracotta, painted with slips & engraved under glaze. 59,5 x 35,5 cm. Fundación Almine & Bernard Ruiz-Picasso para el Arte.

**OPP.47:149**; GS.03:1.112; JR.10\*:143p





**Tête de faune.** Vallauris. 1947. Hand-painted & glazed ceramic plate. 32 x 38,5 cm. Sotheby's. #180, N08220, 09/12/06.

---

**OPP.47:158**

---

**Oiseau.** Paris. 1947. Unique ceramic plate. 32 x 38,1 cm. Jane Kahan Gallery. 2005.

---

**OPP.47:186**





**Service poisson (M).** Vallauris. 1947. Glazed ceramic plate. 23 cm. Christie's. #0071, 5300, 10/25/07.

**OPP.47:187**; AR:16

**Service poisson (F).** Vallauris. 1947. Glazed earthenware platter painted in colors, edition 200. 31,7 x 39 cm. Christie's. #276, 2044, 10/28-29/08.

**OPP.47:200**; AR:9







**Tête de faune.** [Vallauris]. 1947. Color lithograph, edition 50. 18 x 13,7 cm. Arno Winterberg Heidelberg. 2009.

**OPP.47:212**

---

**Service poisson (L).** Vallauris. 1947. Glazed ceramic bowl, edition 300. 18,8 cm. Christie's. #59, 5981, 10/29/09.

**OPP.47:213**; AR:15





**Service poisson (D).** Vallauris. 1947. Glazed ceramic bowl, edition 300. 18,8 cm. Christie's. #63, 5981, 10/29/09.

---

**OPP.47:214**; AR:7

**Service poisson (K).** Vallauris. 1947. Glazed ceramic bowl, edition 300. 18,9 cm. Christie's. #66, 5981, 10/29/09.

---

**OPP.47:215**; AR:14





**Service poisson (I).** Vallauris. 1947. Glazed ceramic bowl, edition 300. 18,9 cm. Christie's. #60, 5981, 10/29/09.

**OPP.47:216**; AR:12

**Service poisson (E).** Vallauris. 1947. Glazed ceramic bowl, edition 300. 18,4 cm. Christie's. #56, 5981, 10/29/09.

**OPP.47:217**; AR:8





**Service poisson (X).** Vallauris. 1947. Glazed ceramic plate, edition 300. 22,9 cm. Christie's. #72, 5981, 10/29/09.

**OPP.47:218;** AR:28

**Service poisson (J).** Vallauris. 1947. Glazed ceramic bowl, edition 300. 18,8 cm. Christie's. #54, 5981, 10/29/09.

**OPP.47:219;** AR:13





**Service poisson (R).** Vallauris. 1947. Glazed ceramic plate, edition 300. 21,8 cm. Christie's. #68, 5981, 10/29/09.

---

**OPP.47:220**; AR:21

**Service poisson (A).** Vallauris. 1947. Glazed ceramic bowl, edition 300. 18,9 cm. Christie's. #57, 5981, 10/29/09.

---

**OPP.47:221**; AR:4





**Service poisson (V).** Vallauris. 1947. Glazed ceramic plate, edition 300. 22,2 cm. Christie's. #74, 5981, 10/29/09.

---

**OPP.47:222**; AR:26

**Service poisson (H).** Vallauris. 1949. Glazed ceramic bowl, edition 300. 18,8 cm. Christie's. #55, 5981, 10/29/09.

---

**OPP.47:223**; AR:11





**Service poisson (P).** Vallauris. 1947. Glazed ceramic plate, edition 300. 22 cm. Christie's. #71, 5981, 10/29/09.

---

**OPP.47:224;** AR:19

**Service poisson (S).** Vallauris. 1947. Glazed ceramic plate, edition 300. 22,7 cm. Christie's. #73, 5981, 10/29/09.

---

**OPP.47:225;** AR:23





**Service poisson (W).** Vallauris. 1947. Glazed ceramic plate, edition 300. 22,5 cm. Christie's. #78, 5981, 10/29/09.

**OPP.47:226**; AR:27

**Service poisson (B).** Vallauris. 1947. Glazed ceramic bowl, edition 300. 18,8 cm. Christie's. #64, 5981, 10/29/09.

**OPP.47:227**; AR:5







**Service poisson (T).** Vallauris. 1947. Glazed ceramic plate, edition 300. 21,8 cm. Christie's. #69, 5981, 10/29/09.

---

**OPP.47:228;** AR:24

**Service poisson (N).** Vallauris. 1947. Glazed ceramic plate, edition 300. 22,7 cm. Christie's. #67, 5981, 10/29/09.

---

**OPP.47:229;** AR:17





**Service poisson (G).** Vallauris. 1947. Glazed ceramic bowl, edition 300. 18,9 cm. Christie's. #61, 5981, 10/29/09.

---

**OPP.47:230**; AR:10

**Service poisson (U).** Vallauris. 1947. Glazed ceramic plate, edition 300. 21,5 cm. Christie's. #77, 5981, 10/29/09.

---

**OPP.47:231**; AR:25





**Service poisson (O)**. Vallauris. 1947. Glazed ceramic plate, edition 300. 22,6 cm. Christie's. #79, 5981, 10/29/09.

**OPP.47:232**; AR:18

**Nu de profil: garde gauche (Iliazd, Escrito)**. Paris. 1947. Engraving with burin on Japan paper. 33,5 x 7,5 cm. Fine Arts Museums of San Francisco. (Inv 2000.200.58.1). The Reva & David Logan Collection of Illustrated Books.

**OPP.47:234**; B.I:463; GC:48.6; BO.00\*:34





**Nu de face: garde droit (Iliazd, Escrito)**. Paris. 1947. Engraving with burin on Japan paper. 32,5 x 6,4 cm. Fine Arts Museums of San Francisco. (Inv 2000.200.58.6). The Reva & David Logan Collection of Illustrated Books.

**OPP.47:236**; B.I:467; GC:48.1; BO.00\*:40

---

**Corrida**. Antibes. 1947. White earthenware clay plate, painted, decoration in engobes & oxides, opaque glazed. 32 x 38 cm. Musée Picasso, Antibes.

**OPP.47:237**; JV.06\*:201p





**Taureau.** Vallauris. 1947. Fully glazed ceramic plate. 37,9 cm. Christie's. #320, 7976, 06/22/11.

**OPP.47:246**; BS.08b\*:8

---

**Femme assise dans la nature.** Vallauris. 1947. Faïence, engobe painting beneath glaze. 32 x 38 cm. Museum Ludwig, Köln. (Inv ML 01590). Schenkung 2001.

**OPP.47:275**; WO.92\*:133





**Nature morte aux ciseaux et à la grappe.**

Vallauris. 1947. Faience, engobe painting. 32 x 38 cm. Museum Ludwig, Köln. (Inv ML 01596). Schenkung 27.06.1994.

**OPP.47:276**; WO.92\*:134

---

**Taureau et soleil.** Vallauris. 1947. Faience, with partly engraved decoration & engobe painting beneath glaze. 32 x 38 cm. Museum Ludwig, Köln. (Inv ML 01568). Schenkung 1994.

**OPP.47:277**; WO.92\*:135





**Corrida.** Vallauris. 1947. Faience, engobe painting beneath glaze. 32 x 28 cm. Museum Ludwig, Köln. (Inv ML 01569). Schenkung 1994.

**OPP.47:278**; WO.92\*:136

---

**Tête de faune.** Vallauris. 1947. Ceramic dish. 32 x 38 cm. Musée Picasso, Antibes.

**OPP.47:279**; DG.87:54p





**Tête de jeune fille.** Paris. 1947. Lithograph. 50,1 x 39,7 cm. Sotheby's. #117, N08740, 04/29/11.

**OPP.47:280**

---

**Picador.** Vallauris. [1947]. Ceramic dish. S/U. Private collection.

**OPP.47:281**; BF.14:135p; FM.84:46p







**Hibou.** Vallauris. 1947. Terracotta, painted in glazed yellow, eyes & beak in relief, schematic indications of feathers incised. 20 x 20 x 13 cm. Marina Picasso Collection. (Inv 56144). Courtesy Galerie Jan Krugier, Geneva.

**OPP.47:284**; GS.85\*:101

---

**Combat de centaures.** Vallauris. [1947]. Ceramic plate [OïC]. S/U. Private collection.

**OPP.47:287**; MI.53\*:220





**Femme et miroir.** Vallauris. [1947]. Ceramic plate [OïC]. S/U. Private collection.

**OPP.47:288**; FR.47:223

---

**Centaure et musicien.** Vallauris. 1947.  
Fully glazed ceramic plate. 37,5 cm.  
Christie's. #22, 7974, 06/21/11.

**OPP.47:289**; BS.08b\*:4





**Deux poissons.** Vallauris. 1947. Fully glazed ceramic plate. 37,5 cm. Christie's. #12, 7974, 06/21/11.

**OPP.47:290**; BS.08b\*:10

**Nature morte.** Vallauris. 1947. Fully glazed ceramic plate. 37,2 cm. Christie's. #324, 7976, 06/22/11.

**OPP.47:291**; BS.08b\*:5





**Scène de tauromachie.** Vallauris. 1947. Fully glazed ceramic plate. 37,7 cm. Christie's. #325, 7976, 06/22/11.

**OPP.47:293**; BS.08b\*:9; BS.90b\*:25;  
FE.00\*:115

---

**Oiseau.** Vallauris. 1947. Partially glazed ceramic plate. 38,2 cm. Christie's. #305, 7976, 06/22/11.

**OPP.47:294**; BS.08b\*:1





**Visage blanc.** Vallauris. 1947. White clay decorated with engobe & partially glazed. 3,28 x 3,97 x 0,44 cm. Museu Picasso, Barcelona. Donation 1982.

**OPP.47:295;** MPB:112.467; BA.10a\*:n/a; TO.04\*:n/a

---

**Portrait de Françoise.** Paris. 1947. Colored crayons on buff paper. 9,8 x 5,7 cm. Christie's. #476, 1572, 11/02/05. Formerly Françoise Gilot Collection.

**OPP.47:303**





**Masque de faune.** Vallauris. 1947. Ceramic plate.  
32,4 x 38,8 cm. Frederick R. Weisman Art  
Foundation, Los Angeles. (Inv 1067 FRWAF).

**OPP.47:305**

---

**Pigeon.** Vallauris. 1947. Earthenware plate  
with slip. 23 x 30 cm. Musée Municipal  
d'Art Moderne, Céret.

**OPP.47:309**; CE.04\*:106; PF.10\*:63





**Femme assise.** Paris. [1945] 1947. Rosy beife terracotta, modeled, elements applied & face engraved under tinted glaze. 12 x 7 x 7,5 cm. Fundación Almine & Bernard Ruiz-Picasso para el Arte.

**OPP.47:324**; JR.10\*:82p; JR.12\*:260p; KB.04:121p; MI.01\*:133; TU.15\*:102

---

**Femme debout.** Paris. [1945] 1947. Rosy beife terracotta, modeled, elements applied & face engraved under tinted glaze.. 17,8 x 5 x 4 cm. Private collection.

**OPP.47:325**; JR.10\*:83p; JR.12\*:260p; MI.01\*:134





**Femme assise.** Paris. 1947. Rosy beige terracotta, modeled, elements applied & face engraved under tinted glaze.. 19 x 5 x 7 cm. The Museum of Modern Art, NYC. (Inv 551.2016). Gift of Almine and Bernard Ruiz-Picasso.

**OPP.47:326**; JR.12\*:260p; TU.15\*:103

---

**Petit masque de faune.** Vallauris. 1947. Terracotta, engraved & painted with yellow, chestnut & brown enamel. 31 x 38 x 4 cm. Private collection.

**OPP.47:330**; JR.10\*:137p







**Taureau.** Vallauris. 1947. Terracotta, engraved & painted with brown & ochre slips on a white background. 32 x 38 x 4 cm. Gagosian Gallery, New York.

**OPP.47:331**; JR.10\*:140p

---

**Tanagra aux mains jointes sur la genou droit.** Vallauris. 1947. White terracotta figurine, engraved & painted in engobes & oxides, partially glazed. 35 x 13 x 11 cm. Musée Picasso, Antibes.

**OPP.47:347**; JA.09\*:177p; JV.06\*:219p





**Tanagra assise aux mains jointes.** Vallauris. 1947. White terracotta figurine, engraved & painted in engobes & oxides, partially glazed. 30 x 15 x 13,5 cm. Musée Picasso, Antibes.

**OPP.47:348**; GP.96:291p; JA.09\*:177p; JV.06\*:220p

---

**Composition à la sole et au rouget.** Vallauris. 1947. White earthenware clay plate, decoration engraved & painted in engobes & oxides, color glazed. 32 x 38 cm. Musée Picasso, Antibes.

**OPP.47:380**; JV.06\*:195p





**Corrida.** Vallauris. 1947. White earthenware clay plate, decoration painted in engobes & oxides, glazed. 32 x 38 cm. Musée Picasso, Antibes.

**OPP.47:384**; MPA:1949.4.12; GU.00:72; JV.06\*:198p

**Corrida.** Vallauris. 1947. White earthenware clay plate, decoration painted in engobes & oxides, glazed. 32 x 38 cm. Musée Picasso, Antibes.

**OPP.47:385**; JV.06\*:198p





**Corrida.** Vallauris. 1947. White earthenware clay plate, decoration painted in engobes, oxides & white enamel, glazed. 32 x 38 cm. Musée Picasso, Antibes.

**OPP.47:386;** JV.06\*:199p

**Corrida.** Vallauris. 1947. White earthenware clay plate, decoration painted in engobes & oxides, glazed. 32 x 38 cm. Musée Picasso, Antibes.

**OPP.47:387;** JV.06\*:200p





**Corrida.** Vallauris. 1947. White earthenware clay plate, decoration painted in engobes & oxides, glazed. 32 x 38 cm. Musée Picasso, Antibes.

**OPP.47:388;** JV.06\*:200p

**Tête de faune en forme de lyre.**

Vallauris. 1947. White earthenware clay plate, decoration painted in engobes & oxides, glazed. 32 x 38 cm. Musée Picasso, Antibes.

**OPP.47:389;** JV.06\*:201p





**Corrida.** Vallauris. 1947. White earthenware clay plate, decoration engraved & painted in engobes & oxides, glazed. 32 x 38 cm. Musée Picasso, Antibes.

**OPP.47:390;** JV.06\*:202p

**Corrida.** Vallauris. 1947. White earthenware clay plate, decoration engraved & painted in engobes & oxides, glazed. 32 x 38 cm. Musée Picasso, Antibes.

**OPP.47:391;** JV.06\*:202p





**Corrida.** Vallauris. 1947. White earthenware clay plate, decoration engraved & painted in engobes & oxides, glazed. 32 x 38 cm. Musée Picasso, Antibes.

**OPP.47:392;** JV.06\*:203p

**'Ma Jolie'.** Paris. 1947. Print for the suite Maurice Raynal, Peintres de XXe siècle [After *Pipe, verre, as de trèfle, bouteille de Bass, guitare, dé ('Ma Jolie')*]. 25,4 x 17,7 cm. Private collection.

**OPP.47:402**





**Combat de centaures.** Vallauris. 1947. Ceramic plate. S/U. Private collection.

**OPP.47:409**; GP.96:285p

**Corrida: les banderilles; oiseau bleu.** Vallauris. 1947. White earthenware clay plate, engraved & painted in engobes. 32 x 38 cm. Private collection.

**OPP.47:410**; JC.01b\*:115







**Trois hommes dans un paysage.** Vallauris. 1947. Painted & glazed ceramic; plat long with crimped edge. 32,5 x 39,5 cm. Sotheby's. #111, L15007, 06/25/15.

**OPP.47:449**; GE.04\*:n/a; HB.85\*:n/a

**Centaure avec chouette.** Vallauris. 1947. Painted, partially glazed & lightly incised ceramic; round plate. 22 cm. Sotheby's. #114, L15007, 06/25/15.

**OPP.47:450**; KU.99\*:98





**Tauromachie.** Vallauris. 1947. Painted & glazed ceramic; plat long. 31,5 x 37,5 cm. Sotheby's. #160, L15007, 06/25/15.

---

**OPP.47:455**

---

**Cabri.** Vallauris. 1947. Painted ceramic; manipulated vase. 37 cm. Sotheby's. #175, L15007, 06/25/15.

---

**OPP.47:457**





**Poisson bleu.** Vallauris. 1947. Painted & glazed ceramic; plat long. 30,5 x 38 cm. Sotheby's. #180, L15007, 06/25/15.

**OPP.47:458;** HB.85\*:n/a

**Deux calamars et un serpent de mer.** Vallauris. [1947]. Painted, incised & glazed ceramic; round plate. 32,3 cm. Sotheby's. #11, N09727, 05/18/17. Formerly Marina Picasso Collection.

**OPP.47:459**





**Oiseau.** Vallauris. 1947. Painted & glazed ceramic; plat long. 32 x 38,5 cm. Sotheby's. #187, L15007, 06/25/15.

**OPP.47:461**; HB.85\*:n/a; KU.99\*:96

---

**Visage abstrait.** Vallauris. 1947. Painted & glazed ceramic; plat long. 31 x 38 cm. Sotheby's. #194, L15007, 06/25/15.

**OPP.47:463**; HB.85\*:n/a





**Trois poissons.** Vallauris. 1947. Painted & glazed ceramic; plat long with crimped edges. 37,6 x 31,3 cm. Sotheby's. #652, L16005, 02/05/16. Formerly Marina Picasso Collection.

**OPP.47:488**; HB.85\*:n/a; KU.99\*:3; TF.00\*:2; VC.98\*:5

---

**Musicien et deux danseurs.** Vallauris. 1947. Painted & glazed ceramic plat long with crimped edges. 39,3 cm. Sotheby's. #683, L16005, 02/05/16. Formerly Marina Picasso Collection.

**OPP.47:489**; GE.04\*:n/a; HB.85\*:n/a





**Provençal bourrache: femme et fleurs.** Vallauris. [1947].  
Vase with polychrome decoration. S/U. Musée d'Art Moderne de  
Saint-Étienne-Métropole.

**OPP.47:494**; GR.74:274; PD.65:196p

**Plat au picador.** Vallauris. 1947. White  
terracotta, decorated in engobes. 31 x 37  
cm. Musée Municipal d'Art Moderne, Céret.

**OPP.47:498**; CE.04\*:104





**Femme au fauteuil.** Paris. 1947. Charcoal & colored crayon on paper. 64,4 x 49,5 cm. Christie's. #627, 22159, 10/11-24/23. Formerly Michali Gallery, West Palm Beach; Marina Picasso Collection.

**OPP.47:503**; UM.94\*:4

**Trois coureurs estompés.** Vallauris. [1947]. Painted & glazed ceramic; pitcher. 26,2 cm. Sotheby's. #67, N09727, 05/18/17. Formerly Marina Picasso Collection.

**OPP.47:506**





**Danseurs estompés.** Vallauris. [1947]. Painted & glazed ceramic; pitcher. 24,9 cm. Sotheby's. #68, N09727, 05/18/17. Formerly Marina Picasso Collection.

**OPP.47:508**

---

**Esquisse de visage de femme.** Vallauris. [1947]. Painted & glazed ceramic; plat long with crimped edges. 37,4 cm. Sotheby's. #82, N09727, 05/18/17. Formerly Marina Picasso Collection.

**OPP.47:510**; HB.85\*:n/a







**Torero.** Vallauris. 1947. Ceramic plate. S/U.  
Private collection.

---

**OPP.47:511**; MR.16\*:n/a

---

**Couverture (Iliazd, Escrito).** Paris. 1947. Mixed  
media. 38 x 26 cm. Sotheby's. #144, PF1713,  
10/30/17.

---

**OPP.47:516**; GC:48.0





**Tête de faune.** Vallauris. [1947]. Ink & white chalk on paper. 11,2 x 14,6 cm. Sotheby's. #570, PF1730, 12/19-20/17.

---

**OPP.47:519**

---

**Ramón Reventós, Deux Contes.** Paris. 1947. Lithographed facsimile. 33 x 25,5 cm. Sotheby's. #153, L18320, 10/30/18.

---

**OPP.47:531**





**Homme nu devant une table.** Golfe-Juan. 1947. Wash. S/U.  
Private collection.

**OPP.47:550**; PP.47:064; Z.XV:76

**Nature morte à la tranche de pastèque.**  
Vallauris. [1947]. Painted & glazed  
ceramic; plat long with crimped edges.  
38,1 cm. Sotheby's. #303, N10148,  
11/13/19. Formerly Marina Picasso  
Collection.

**OPP.47:558**





**Nature morte au couvert et à la pomme.**

Vallauris. [1947]. Painted & partially glazed ceramic; large round plate. 34,6 cm. Sotheby's. #337, N10148, 11/13/19. Formerly Marina Picasso Collection.

---

**OPP.47:560**

---

**Oiseau.** Vallauris. [1947]. Painted & glazed ceramic; small oval platter. 30,5 cm. Sotheby's. #338, N10148, 11/13/19. Formerly Marina Picasso Collection.

---

**OPP.47:561**





**Deux poissons.** Vallauris. [1947]. Painted & partially glazed ceramic; small round plate. 18,4 cm. Hélène Bailly Gallery. Formerly Sotheby's. #3, N10249, 11/26/19; Marina Picasso Collection.

**OPP.47:562**; CA.48:121p; GE.19\*:n/a

---

**Nature morte à la pomme.** Vallauris. [1947]. Painted & glazed ceramic; round plate. 34 cm. Hélène Bailly Gallery. Formerly Sotheby's. #4, N10249, 11/26/19; Marina Picasso Collection.

**OPP.47:563**; CA.48:148p; GE.19\*:n/a





**Esquisse de visage de femme.** Vallauris. [1947]. Painted & glazed ceramic; plat long with crimped edges. 37,5 cm. Hélène Bailly Gallery. Formerly Sotheby's. #12, N10249, 11/26/19; Marina Picasso Collection.

**OPP.47:565**

**Nature morte au couvert et à la pomme.** Vallauris. [1947]. Painted & glazed ceramic; round plate. 33,3 cm. Hélène Bailly Gallery. Formerly Sotheby's. #33, N10249, 11/26/19; Marina Picasso Collection.

**OPP.47:566**





**Oiseau.** Vallauris. [1947]. Partially painted ceramic; round plate. 18,5 cm. Sotheby's. #108, L20005, 02/19/20. Formerly Marina Picasso Collection.

---

**OPP.47:567**

---

**Pismo (Lettre) (Iliazd, Escrito).** Paris. 1947. Etching, engraving & scraper. 33,2 x 20,5 cm. Sotheby's. #74, N10015, 11/21/19.

---

**OPP.47:569;** B.I:462; Ba:785.01





**Chouette sur une branche.** Vallauris. 1947.  
White clay decorated with glaze, oxide painted &  
lined in scraping and embossing technique. 38 cm.  
Private collection.

---

**OPP.47:570**

---

**Faune et chèvre.** Vallauris. 1947. Painted  
ceramic. 31,5 x 37,2 cm. Sotheby's. #322,  
L20008, 07/20-29/20.

---

**OPP.47:572**







**Autoportrait.** [Paris]. 1947. Engraved pebble. 8 x 15 x 7 cm. Musée National d'Art Moderne, Centre Georges Pompidou, Paris. (Inv AM2003-14).

**OPP.47:573**

**Couverture du catalogue de l'exposition Pablo Picasso Lithographs 1945-1947.** Paris. 1947. Printed cover [After *David et Bethsabée (d'après Cranach) (IV)*]. 19 x 13 cm. Musée Picasso, Paris. (Inv BIB001962).

**OPP.47:574**





**Femme assise.** Vallauris. 1947. Modeled white earthenware clay, incised & glazed. 12,5 x 5 x 6,5 cm. Fundación Almine & Bernard Ruiz-Picasso para el Arte.

**OPP.47:576;** TE.21\*:102

**Nature morte au verre et à la pomme (Le grand verre) (II).** Paris. [1944] 1947. Zinc plate. 36,7 x 29 cm. Musée Picasso, Paris. Dation 1979.

**OPP.47:582;** MPP:2984





**Nature morte au verre et a la pomme.** Paris. 1947.  
Lithograph on Arches wove paper. 44,5 x 33 cm. Bonhams. #19,  
27761, 05/18/22.

**OPP.47:595**; Ba:697.Bb

**Femme.** Vallauris. 1947. White terracotta, turned &  
modeled. 25,5 x 10,5 x 8,5 cm. Fundación Almine &  
Bernard Ruiz-Picasso para el Arte.

**OPP.47:597**; LE.21\*:252





**Le hibou.** Paris. 1947. Color pencil on paper. 29,5 x 19 cm. Drouot. #105, 21475424, 05/23/23.

**OPP.47:600**

---

**Taureau.** Paris. 1947. Clay. 8,9 x 9 x 3,5 cm. Private collection.

**OPP.47:604;** PP.47:073; WS:338.A





**Tête de faune.** Vallauris. 1947. White terracotta, stamped & painted with slips under glaze. 32 x 38 cm. Fundación Almine & Bernard Ruiz-Picasso para el Arte.

---

**OPP.47:606**

**Oiseau.** Antibes. 1946. Folded paper. S/U. Private collection.

---

**OPP.47:609**





**Visage dans étoile.** Vallauris. 1947. White earthenware ceramic plate, partially engraved, & colored engobe & glaze [Original mold for *Visage dans étoile*]. 38,8 cm. Christie's. #44, 12148, 05/06-17/16.

**OPP.47:619**

---

**Pigeon.** Vallauris. 1947. Ceramic plate. 32 x 39 cm. Private collection.

**OPP.47:003**; MR.53:119p





**Service poisson (C).** Vallauris. 1947. Glazed white ceramic platter, one glazed white ceramic tureen, twelve glazed white ceramic bowls & twelve glazed white ceramic plates, painted in colors, edition 300. 18 cm. Christie's. #173, 9632, 04/25/01.

**OPP.47:011**; AR:6

**Visage.** Vallauris. 1947. Glazed white earthenware ceramic platter, painted in yellow and blue, edition 200. 31,8 x 38,7 cm. Christie's. #221, 9768, 10/31/01.

**OPP.47:016**; AR:29





**Visage bleu.** Vallauris. 1947. Glazed white ceramic platter, painted in colors, edition 200. 31,1 x 38,4 cm. Christie's. #220, 9768, 10/31/01.

**OPP.47:017**; AR:2

---

**Taureau gravé.** Vallauris. 1947. Clay platter, glazed, painted in black and yellow, edition 200. [32 x 39] 31 x 38,5 cm. Sotheby's. #727, W01402, 10/24/01.

**OPP.47:018**; AR:32







**Plat à barbe décor corrida.** Vallauris. 1947.  
Ceramic, hand painted white terracotta. 32 x 37,8  
cm. Hammer Galleries. 2001.

**OPP.47:022**; NY.01c\*:n/a

---

**Plat à tête d'homme.** Vallauris. 1947. Ceramic,  
hand painted white terracotta. 37,8 x 32 cm.  
Hammer Galleries. 2001.

**OPP.47:023**





**Oiseaux.** Vallauris. 1947. Painted & glazed ceramic plate. 38,1 cm. Christie's. #366, 1076, 05/08/02.

**OPP.47:025**; GR.74:18

**Minotaure.** Vallauris. 1947. Ceramic plate painted & partially glazed. 4 x 31,5 x 38 cm. Muzeum Narodowe, Warsaw. Picasso Donation August/1948.

**OPP.47:037**; JC.01b\*:116; PE.00\*:67





**Service poisson (Q).** Vallauris. 1947. Partially glazed ceramic plate. 19 cm. Christie's. #579, 1226, 04/29/03.

**OPP.47:075**; AR:20

**Centaure, faune et bacchante.** Cap d'Antibes. 1947. Lithograph, edition 75. 66,5 x 51,7 cm. Christie's. #82, 1259, 07/23/03.

**OPP.47:078**; DQ.74:214-215p





**Claude bébé.** [Paris]. 1947. Pen & ink & collage on paper. [49,8 x 64,4] 49,8 x 54,5 cm. Sotheby's. #112, N10489, 12/14/20. Formerly Sotheby's. #40, 05/10/99.

**OPP.47:079**

---

**Tete de jeune fille (III).** Paris. 1947. Lithograph, edition 50. 50,3 x 40,1 cm. Meyerovich Gallery. 2005.

**OPP.47:092;** M:68.03





**Tête de faune.** Vallauris. 1947. Ceramic Plate.  
S/U. Jane Kahan Gallery. 2005.

**OPP.47:093**

---

**Plat masque mythologique.** Vallauris.  
1947. Unique ceramic: hand painted white  
terracotta. 37,8 x 32 cm. Hammer  
Galleries. 2005.

**OPP.47:107**





**Quatre poissons polychromes.** Vallauris. 1947. Painted & glazed white earthenware platter, edition 200. 32 cm. Sotheby's. #111, W05723, 07/12/05.

**OPP.47:120**; AR:31

---

**Centaure à l'arc.** Vallauris. 1947. Ceramic plate. 31,5 x 37 cm. Hammer Galleries. 2006.

**OPP.47:121**; GR.74:14





**Pigeon.** Paris. 1947. Colored crayons on paper.  
25,5 x 33,3 cm. Sotheby's. #95, N01760,  
09/13/05.

---

**OPP.47:123**

---

**Service poisson.** Vallauris. 1947. Painted  
& glazed earthenware plate, edition 300.  
38 cm. Sotheby's. #257, W05711,  
10/26/05.

---

**OPP.47:124;** AR:3





**Joueur de diaule.** Vallauris. 1947. Painted & glazed earthenware dish, edition 200. [32 x 39] 31,8 x 38,7 cm. Christie's. #198, 1368, 04/28/04.

**OPP.47:126**; AR:1; HK.14\*:133p; PM.10:81p

---

**Tête de faune.** Vallauris. 1947. Glazed ceramic. 31,8 x 38,1 cm. Russeck Gallery, Palm Beach. 2005.

**OPP.47:128**







**Courses de taureaux (Corrida).** Vallauris. 1947.  
White clay plate, decoration with engobe, glazed.  
32 x 38 [37,1] cm. Christie's. #326, 7976,  
06/22/11. Formerly Fondation Beyeler,  
Riehen/Basel.

**OPP.47:134;** BS.08b\*:9; BS.90b\*:22;  
FE.00\*:125; WW.91:471p

**Scène de tauromachie.** Vallauris. 1947.  
White clay plate, decoration with engobe,  
glazed. 32 x 38 [37,6] cm. Christie's. #25,  
7974, 06/21/11. Formerly Fondation  
Beyeler, Riehen/Basel.

**OPP.47:135;** BS.08b\*:7; BS.90b\*:23;  
WW.91:471p





**Tête de faune.** Vallauris. 1947. White clay plate, decoration with engobe, glazed. 32 x 38 cm. Galerie Beyeler, Basel.

**OPP.47:137**; WW.91:470p

---

**Picador et taureau.** Vallauris. 1947. Glazed ceramic plate. 31,5 x 38 cm. Sotheby's. #469, L06005, 02/08/06.

**OPP.47:139**





**Oiseau polychrome.** Vallauris. 1947. Painted & glazed white earthenware dish, edition 200. 32 x 39 cm. Sotheby's. #153, W06710 , 03/23/06.

**OPP.47:140**; AR:33; LR.07\*:9

---

**Visage bleu et brun.** Vallauris. 1947. White earthenware plate, decoration in engobes, engraved under glaze, edition 200. 32 x 38,5 cm. Saper Gallery, MI. 2006.

**OPP.47:141**





**Vierge à l'enfant.** Paris. 1947. Gouache & watercolor on paper. 31,5 x 24 cm. Christie's. #165, 5435, 12/01/06.

**OPP.47:164**

---

**Main avec manche.** Paris. 1947~1948.  
Bronze with brown patina. [7 x 25 x 11] [7 x 24 x 10] 6,5 x 24 x 9,5 cm. Musée des Beaux-Arts, Grenoble. (Inv DG 1953-2-3).  
On loan from Musée National d'Art Moderne, Centre Georges Pompidou, Paris. (Inv AM.958S). Achat 1953.

**OPP.47:090**; PP.47:072; WS:338.II;  
AM.53\*:n/a; BM.61\*:n/a; GT.10:89.1;  
JR.62\*:9.16; KB.49:216; KS.65\*:n/a;  
MF.10\*:92p; NY.49a\*:n/a; NY.49c\*:n/a;  
NY.51c\*:n/a; NY.60c\*:n/a; PA.50b\*:n/a;  
ST.59\*:n/a





**Taureau debout.** Vallauris. 1947~1948 [1949].  
Reddish clay ceramic, decorated in engobes &  
oxides. 37 x 40 x 30 cm. Musée Picasso, Antibes.

**OPP.47:194**; DG.87:51p; GP.96:285p;  
GR.74:258/260; JA.09\*:171p; JV.06\*:209p;  
MM.02:13p; PD.09:390p; TU.15\*:109; UP.00:910;  
WR.80\*:397p

---

**Condor.** Antibes. 1947~1948 [1949].  
Reddish clay ceramic, decoration in  
engobes & oxides. 37,5 x 40 x 16,5 cm.  
Musée Picasso, Antibes.

**OPP.47:238**; GP.96:292p; JA.09\*:173p;  
JF.96:146p; JV.06\*:212p; PD.09:392p





**Femme.** Antibes. 1947~1948. White earthenware clay pitcher, decoration painted in engobes & oxides, glazed. 36 x 34 x 18 cm. Musée Picasso, Antibes.

**OPP.47:239**; JV.06\*:223p

**Chouette ovoïde.** Antibes. 1947~1948. White earthenware, engraved, decorations in engobes & oxides. 21,5 x 28 x 9,5 cm. Musée Picasso, Antibes. Don de l'artiste, 1949.

**OPP.47:240**; MPA:1949.4.42; JA.09\*:170p; JV.06\*:211p; LE.21\*:249; PA.20j\*:178





**Tanagra à la spirale.** Antibes. 1947~1948. White earthenware figurine, thrown, modeled, decorations in engobes & oxides. 29 x 12 x 10 cm. Musée Picasso, Antibes.

**OPP.47:242**; JA.09\*:177p; JF.96:147p; JV.06\*:218p; PA.21g\*:214p

**Couteau, fourchette, pomme coupée en deux et épluchures.** Vallauris. 1947~1948. White earthenware plate, turned, modelled, decoration in engobes & brush. 4,5 x 33 cm. Musée Picasso, Paris. Dation 1979.

**OPP.47:250**; MPP:3687; AI.05\*:n/a; LE.21\*:323; MG.05\*:n/a; MP.85:440; PA.08b\*:n/a





**Sardines.** Vallauris. 1947~1948. White earthenware plate, decoration in manganese & incisions. 31 x 37,5 x 4 cm. Musée Picasso, Paris. Dation 1979.

**OPP.47:253**; MPP:3678; CE.04\*:110; MP.85:439; PA.08b\*:n/a; PA.79a\*:n/a

---

**Petit visage.** Vallauris. 1947~1948. Painted ceramic; bain marie dish. 21,5 cm. Sotheby's. #210, L15007, 06/25/15.

**OPP.47:308**







**Tanagra à l'amphore.** Vallauris. 1947~1948. White terracotta figurine, engraved & painted in engobes over oxides & white glaze. 45 x 33 x 19 cm. Musée Picasso, Antibes.

**OPP.47:322**; JA,09\*:178p; JV.06\*:221p

---

**Femme à la robe bleue.** Vallauris. 1947~1948. White terracotta, thrown, engraved, painted with slips & oxides & glazed. 40,5 x 18 x 8 cm. Museo Picasso, Málaga. On temporary loan from Fundación Almine & Bernard Ruiz-Picasso para el Arte.

**OPP.47:327**; BA.23:233p; JR.12\*:295p; NC.17\*:108





**Femme à la robe verte.** Vallauris. 1947~1948. White terracotta, thrown, engraved, painted with slips, under glaze. 37,5 x 9 x 10 cm. Private collection.

**OPP.47:328**; JR.12\*:297p

---

**Cabri couché.** Vallauris. 1947~1948. White terracotta, painted & decorated in engobes & oxides. 32 x 15 x 32 cm. Musée Picasso, Antibes.

**OPP.47:343**; JA.09\*:169p; JV.06\*:210p





**Échassier.** Vallauris. 1947~1948. White terracotta, painted & decorated in engobes & oxides. 71 x 40 x 24 cm. Musée Picasso, Antibes.

**OPP.47:344**; CE.04:32; JA.09\*:172p; JV.06\*:213p

---

**Chouette.** Vallauris. 1947~1948. White terracotta vase, painted & decorated in engobes & oxides. 38 x 33 x 12 cm. Musée Picasso, Antibes.

**OPP.47:345**; JA.09\*:174p; JV.06\*:215p; TU.15\*:108





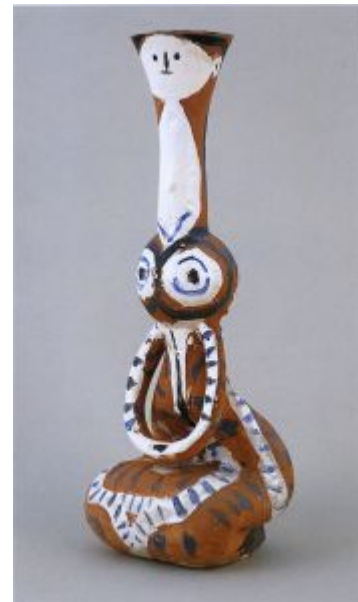
**Chouette avec tête de faune.** Vallauris. 1947~1948. White terracotta vase, engraved & painted in engobes & oxides, partially glazed. 49 x 36 x 33 cm. Musée Picasso, Antibes.

**OPP.47:346**; JA.98\*:175p; JV.06\*:231p

---

**Tanagra au long cou.** Vallauris. 1947~1948. White terracotta vase, engraved & painted in engobes & oxides, partially glazed. 28,5 x 11 x 9 cm. Musée Picasso, Antibes.

**OPP.47:349**; GB.14\*:184; JA.09\*:177p; JV.06\*:217p





**Chouette.** Vallauris. 1947~1948. White earthenware clay plate, decoration engraved & painted in engobes & oxides, glazed. 32 x 38 cm. Musée Picasso, Antibes.

**OPP.47:379**; JV.06\*:194p

**Composition aux deux poissons rayés.** Vallauris. 1947~1948. White earthenware clay plate, decoration painted in engobes & oxides, glazed. 32 x 38 cm. Musée Picasso, Antibes.

**OPP.47:382**; JV.06\*:196p





**Composition à la sole et au rouget.** Vallauris. 1947~1948. White earthenware clay plate, decoration engraved & painted in engobes & oxides, glazed. 32 x 38 cm. Musée Picasso, Antibes.

**OPP.47:383**; JV.06\*:197p

**Berger musicien et chèvre.** Vallauris. 1947~1948. White earthenware clay pitcher, decoration engraved & painted in engobes, oxides & white enamel, partially glazed. 25 x 22 x 12 cm. Musée Picasso, Antibes.

**OPP.47:393**; GP.96:291p; JV.06\*:214p; PA.20j\*:175





**Fleurs et feuilles.** Vallauris. 1947~1948. White earthenware clay vase, decoration engraved & painted in engobes & oxides, partially glazed. 60 x 30 x 15,5 cm. Musée Picasso, Antibes.

**OPP.47:394**; JV.06\*:230p

---

**Trois nus.** Vallauris. 1947~1948. White earthenware clay pitcher, decoration engraved & painted in engobes, oxides & white enamel, partially glazed. 24 x 22 x 12 cm. Musée Picasso, Antibes.

**OPP.47:395**; JV.06\*:227p





**Formes stylisées.** Vallauris. 1947~1948. White earthenware clay pitcher, decoration painted in engobes & oxides, glazed. 36 x 32 x 17,5 cm. Musée Picasso, Antibes.

**OPP.47:396;** JV.06\*:229p

**Couteau, fourchette et pomme.**  
Vallauris. 1947~1948. Ceramic plate. S/U.  
Private collection.

**OPP.47:412**







**Tête de faune.** Vallauris. 1947~1948. Painted & glazed ceramic; round plate. 19,5 cm. Sotheby's. #153, L15007, 06/25/15.

---

**OPP.47:452**

---

**Tête de faunesse.** Vallauris. 1947~1948. Painted & glazed ceramic; round plate. 19,5 cm. Sotheby's. #154, L15007, 06/25/15.

---

**OPP.47:453**





**Poisson.** Vallauris. [1947~1948]. White terracotta plate, engraved & painted in engobes & oxides. 32 x 38 cm. Fundación Almine & Bernard Ruiz-Picasso para el Arte.

**OPP.47:495;** CE.04\*:111

**Cheval.** Vallauris. 1947~1948. Painted ceramic; bain marie dish. 21,5 cm. Sotheby's. #28, N09727, 05/18/17. Formerly Marina Picasso Collection.

**OPP.47:507**





**Femme à la robe bleue.** Vallauris. 1947~1948. White earthenware clay, painted in engobes & oxides, partially glazed. 40,5 cm. Fundación Almine & Bernard Ruiz-Picasso para el Arte.

**OPP.47:515**; FE.00\*:40; LO.98a\*:41; MG.04b\*:91;  
MG.04e\*:n/a; RJ.99a\*:47p



**Faune jouant de la diaule.** Antibes. 1947 [~1948]. Oil [OiC]. 65 x 50 cm. Private collection.

**OPP.47:551**; PP.48:050; Z.XV:82



**Poulpe.** Vallauris. 1947~1948 [1956]. Fired white clay, molded, decorated with slips & oxides, coated with varnish. 32,4 x 39 x 4 cm. Museu Picasso, Barcelona. Donation Jacqueline Roque Picasso, 1982.

**OPP.47:554**; MPB:112.438; BA.18\*:258p;  
BA.23\*:227p

---

**Tanagra noir et bleu.** Vallauris. [1947~1948]. White terracotta, turned & modeled, painted with oxides & engobe. 66,5 x 20 x 21 cm. Private collection.

**OPP.47:598**; LE.21\*:253\*





**Oiseau.** Vallauris. 1947~1948. Glazed white earthenware, painted in oxides & engobes, partially glazed. 38 x 18,5 x 36 cm. Museo Picasso, Málaga. On temporary loan from Fundación Almine & Bernard Ruiz-Picasso para el Arte.

**OPP.47:618**; NC.17\*:109

---

**Quatre crevettes et un citron.** Vallauris. 1947~1949. Painted & glazed ceramic; round plate. 18,5 cm. Sotheby's. #182, L15007, 06/25/15.

**OPP.47:460**





**Oiseau.** Vallauris. 1947~1949. Painted & glazed ceramic; plaque long. 38,4 cm. Sotheby's. #50, L20010, 06/18/20. Formerly Marina Picasso Collection.

---

**OPP.47:571**

**Chouette.** Vallauris. 1947~1953. White earthenware, turned & assembled, decorations in engobes & incisions. 30 x 18 x 27 cm. Musée Picasso, Paris. Also Musée des Beaux-Arts, Nice.

---

**OPP.47:249**; MPP:3722; JM.07\*:66; LE.21\*:250; MP.85:443; PA.08b\*:n/a





**Bouteille en forme de femme.** Vallauris. [1947~1953]. White terracotta turned & modeled, painted in blue engobes on white background. 36,5 x 16 cm. Private collection.

**OPP.47:599;** LE.21\*:254